

ASB closure will cost local businesses

Helensville business owners say the closure of the town's ASB bank will cost them both time and money.

Helensville News spoke with a number of Mill Road and Commercial Road business people and they all voiced similar concerns.

Owner-operators will have difficulty finding the time to trek back and forth to Westgate to do regular banking, which could result in businesses having to hold more cash on their premises - an issue that raised strong safety issues.

Linda Ashton of Premier Mechanical in Mill Road says: "we simply can't take cheques anymore. That will be an inconvenience for some customers."

Like Premier, Karen Reilly of United Travel in Commercial Road will offer clients the use of a computer so they can log into internet banking and put payments through that way.

But as Karen points out, not everyone - especially older people, a key client base for her - uses internet banking.

Because her business sells big ticket holidays, Eftpos usually can't be used for payments because of daily withdrawal limits, and she needs to regularly deposit the money her business receives as most of it has to be quickly on-paid to her travel

suppliers.

Karen was one of several business owners *Helensville News* spoke with who used to bank with either the ANZ or BNZ, but switched their allegiances when those banks closed their local branches and the ASB when it moved into town.

Marie Narbey, of The Healing Heart of Helensville, is another of those. She is looking at options, but says she is likely to close her ASB account and either change to Kiwibank, Helensville's only remaining banking service, or go back to the BNZ in Kumeu.

"[Staying with ASB] would mean cash on the premises, which is a concern."

The Paua Room's Linsey Smith agrees. A former ANZ customer, she "supported the ASB because they came here." She says it will be unsafe to keep cash at her premises.

"The whole thing of having to get in a car and drive [to Westgate] just to do banking is a cost to business in both time and money."

Linsey says she will probably close her ASB account and go back to the ANZ in Kumeu.

Meanwhile the ASB has rejected a suggestion the real reason they are closing the Helensville branch was because their building didn't meet the company's strict earthquake proofing standards.

"The decision to close the Helensville branch is based primarily on declining transaction numbers and the fact customers are increasingly using a range of digital banking channels to fulfil their banking



• The Helensville ASB will close on Friday, July 17

needs," says Logan Munro, ASB general manager of branch banking.

"As a normal part of the evaluation for the branch at lease renewal, we assess a range of business metrics to determine the viability of the branch. This review process is independent of any property-related assessment that may take place."

North West District Business Association manager Gary Holmes says his organisation is working the issue on three fronts.

The first is helping ASB locate a suitable location in the town for its ATM machine.

"There are ASB Smart ATMs that offer functionality to securely accept deposits," says Logan Munro. "We are currently working to find an appropriate secure location in Helensville where we might be able to install a Smart ATM."

Secondly, the NWDBA is helping the bank find a suitable site for its information caravan, which it plans to have in Helensville once a month for the first few months after the branch closes, possibly staffed by current Helensville ASB bank staff. Teller cash services will not be available.

• To page 2

Inside...

- Local nabs top legal position ... Pg 3
- New A&P Show manager ... Pg 4
- Bequest to Health Trust ... Pg 5
- Students build garden ... Pg 6
- Body language expert here ... Pg 9
- Bradley family history ... Pg 10
- Footpath gets big upgrade ... Pg 12

PREMIER

One stop - we do the lot!

- COLLISION REPAIR
- MECHANICAL REPAIR
- TYRES

Call today for an appointment or FREE quote!

PH 09 420 8806

www.tyrepower.co.nz



www.facebook.com/helensvillenews

www.helensvillenews.co.nz

www.helensville.co.nz

Should we expect businesses to be socially responsible?

I'm not meaning the small stuff, like sponsoring events or donating to local causes. Should they be putting community responsibility before profits?

I'm talking about the ASB of course, which closes its Helensville branch in a couple of weeks. The closure is going to affect large numbers of locals and local businesses (see page 1), but most particularly the elderly, many of whom no longer drive, and who don't do internet banking.

The bank provides our community with a hugely valuable service, and many locals seem to believe it should stay here to serve us, regardless of the economic feasibility of running its branch.

In my parents' and grandparent's day, people tended to have lifelong loyalties to particular businesses. You banked with the same bank your entire life, supported the same shops, stuck with the same suppliers. That's not the

case today. Admittedly there is a lot more choice now, but people don't think twice about switching power or phone companies – or even banks – if they can get a better deal.

It's plain economics.

Can we really expect the ASB to be any different?

I have no idea whether ASB's Helensville branch makes a profit or not, but I find it hard to believe they would be closing it if it did. Can we really expect it to stay open if it's losing money?

I like to think this newspaper provides a valuable service to the community too. But if it was unable to maintain its (albeit meagre!) profits, I would have to close it. I don't run a charity, and neither does the ASB – making a profit is really the definition of a business.

It's going to be hard to see ASB leave – I will be one of those affected – but they aren't the first to do so (I'm looking at you, ANZ and BNZ) and I believe we should think carefully before condemning them too harshly.

On a happier note, I'm always pleased to bring readers stories about local people who have gone on to do great things - and our page 3 article on Natalie Walker is a case in point. A former local school kid, she has been appointed to one of the most prestigious legal positions in the country, and shows just what you can achieve if you come from our great little town.

- Dave Addison, Editor

Thinking of buying or selling?

Think Jana Mills

36 years a local Rodney resident
'Knowledge of the area -
knowledge of the people'



Award winning real estate sales
and marketing consultant

PRESTIGE

MREINZ, LICENSED AGENT REAA 2008

Find me on Facebook – Jana Mills Real Estate Specialist

Mob: 021 509 990 AH: 09 420 9953

KKK Village unsold

The Kaukapakapa Village Centre development did not sell last month as no suitable tenders were received, says Ray White real estate agent Dave Crow. He is now working with the current owners to determine the best course of action.

Waitoki memories

An informal gathering celebrating Waitoki memories was held at Waitoki School on Saturday, June 27.

After reminiscing in the morning, those attending shared a 'pot luck' lunch. A variety entertainment programme including participation by Waitoki School pupils was presented in the afternoon.

As a follow up to the school's 90th celebrations in July last year, the Historical Society displayed a photographic record of that event. The society also had for sale a commemorative booklet combining the reminiscences recorded at the 90th event, photographs of the school and staff, and a historical time-line of the school and district. Copies of the booklets are available for \$10 from the Helensville Museum.

Organisers Daphne Stevens and Meryl Wilson welcomed present and former residents of Waitoki to the event. Proceeds from the day will be used to support Waitoki School, and help with the refurbishment of the old Waitoki School 'Sunshine' block at the Helensville Museum.

ASB closure (cont...)

• From page 1

"They need a concrete pad for parking and access for power," says Gary.

"It doesn't seem a lot of use having them there for only one day at a time, but I think their aim is to provide some support for customers who wanted to arrange Eftpos cards etc and get advice.

"I guess it's better than nothing."

Thirdly, the business association is exploring options to source an outside supplier to provide a cash deposit service for businesses needing to regularly deposit daily takings.

Koast to Koast Electrical Ltd

TOSHIBA

Your local
Toshiba Heat Pump Installer

Ph: 420 2028 Mob: 021 417 992
koast.electrical@stratanet.co.nz

For all domestic and commercial electrical work

Homebased Education & Care

Childcare in Parakai and Helensville

Call our friendly team now!

Ph (09) 424 2499 Wisia 0274 641 331
10 Walbrook Road, Manly, Whangaparaoa 0930

www.homefromhomechildcare.co.nz

CARPET LAYING & MAT EDGING

Carpet Mat Overlocking

Leesa & Paul Schultz

Ph 420 7441
Mob 027 200 7864

Rt Hon John Key
MP FOR HELENSVILLE

365 Main Road, Kumeu
P: 412 2496
E: john@johnkey.mp.net.nz
www.johnkey.co.nz

Quality Painters & Decorators

Martin Bright
022 317 9517
cushty@farmside.co.nz

Former local lands top law job

A former Helensville resident and Kaipara College student has been given one of the top legal positions in the country.

Natalie Walker, daughter of Greville and Maureen Walker, has been appointed the new Crown Solicitor for Manukau.

The position, one of only 16 nationwide, is similar to that of the American District Attorney, and Natalie and her law partnership Kayes Fletcher Walker will be responsible for all serious criminal prosecutions in South Auckland for the next 10 years.

Unlike the American DA system, Crown Solicitors in New Zealand are law partners with the backing of private law firms. They are appointed on the recommendation of the Attorney-General and by warrant from the Governor-General.

The Manukau position is new; previously the whole of Auckland was handled by a single Crown Solicitor, but in October last year the Crown Law Office decided to split South Auckland off as a separate district because of the amount of prosecution work in the city.

Natalie grew up on a farm between Waimauku and Huapai, attending Waimauku Primary and then Kaipara College, where she studied French.

Her family moved into Helensville when she was in the fifth form, with her parents running the Screatons department store.

To further her French studies, Natalie skipped her final year at Kaipara College, instead living for a year with a family in Lille in the north of France.

She returned to New Zealand, completing a BA in French at Auckland University as well as a BA, LLB law degree. She worked for a while as a commercial lawyer before becoming engaged to Ned Fletcher and moving to England, where Ned studied law at Oxford while Natalie got her Masters in law in London.

Back in New Zealand, she worked briefly

for John Haigh QC, then joined the Crown Solicitor's office in Auckland in July 2001. She was made senior Crown prosecutor, associate and partner in her time there.

An experienced jury advocate, Natalie has appeared in District and High Courts on



• Natalie Walker

serious criminal matters since 2002, as well as criminal appeals in both the High Court and the Court of Appeal.

She has expertise in extradition cases, and has appeared in regulatory prosecutions including cases involving the Ministry for Primary Industries, Work and Income New Zealand, Customs and the Department of Corrections.

Natalie says she had to undergo a "rigorous application process" for the role of Crown Solicitor, including producing "hundreds of pages" of information on herself, her firm, staff, vision and values. After the application was submitted last December, she then had to undergo two interviews, one from her firm's point of view and one personal.

She praised the application process, pointing out "Crown Law has to stand up to public scrutiny."

The appointment means Natalie's law firm will have to undergo rapid and massive expansion, growing from a four person office to an expected 30 by the end of this year.

The firm is currently Auckland-based but will shortly open a Manukau office.

Did You Know??



sells...
Curtain Nets - Wool - Kids' Books
Buttons - Baby Stuff & lots more

- SHOP LOCAL -

'The Best Gift Shop in Town'

44 Commercial Rd Phone / fax 420 8336

Beauty
ELIXIR

BEAUTY TREATMENTS AND
COSMETIC TATTOOING

Melissa Carr
7 Karaka Street, Helensville
EMAIL nzcarrs@gmail.com
TEL 09 420 9775 | MOB 021 187 2661
FACEBOOK: Beauty Elixir - Helensville

WATER Wagon 1
Graeme Waterson

Like us on facebook

0800 KKK H2O 09 420 4688
027 280 2630
'Pure Spring Water Carriers'

Looking for quality residential care for your older loved ones in the Helensville/Rodney area

Our kind, considerate staff are available to care for your loved ones 24/7, and our new purpose-built hospital and dementia wing is now fully operational.

**We offer
Quality of Care,
Quality of Life**

CRAIGWEIL HOUSE
- CARING FOR THE OLDER PERSON -
COME TO VISIT AND VIEW OUR AMAZING FACILITY AT
143 PARKHURST ROAD, PARAKAI
EMAIL: INFO@CRAIGWEIL.CO.NZ



CALL US NOW!
Phone
420 8277

VIDEO EZY

Bring this voucher in, rent a New Release & get another New Release FREE!

1	2	3	4	5	SD11
6	7	8	9	10	

84 Commercial Road Ph 420 7770



Gumboots
Early Learning Centre

www.gumboots.ac.nz
1157 Peak Road R D 2 Helensville, ph 411 9038

KAIPARA CONTRACTORS LTD

YOUR LOCAL BUILDER

STUART HUME
Experienced & professional
Full range of building services

Ph: 420 5782 Mobile: 027 275 2115
kaiparacontractors@gmail.com

Fresh eyes on annual show from new A&P manager

New Helensville A&P Show manager Dave van Dam will be able to look at his first show next February with a fresh pair of eyes – he hasn't been to the show for a couple of years.

The first man to take on the manager/secretary position for the A&P Association in the modern era, Dave and his wife Marietta have lived in Helensville for three years, but prior to that spent 15 years at Waimauku. Their five adult children, ranging in age from 19 to 25, all attended Kaipara College and are "really close" says Dave.

Marietta is Samoan, so the family have visited Samoa a couple of times, Dave saying he wanted the children to understand where they come from.

Dave was born in Wellington but grew up in South Auckland, and comes to the role with a background in business administration.

As part owner he ran the business CH I N T E R N A T I O N A L, manufacturers of the popular drink Ch'i, for around 20 years.

"One day I woke up and decided I'd had enough," says Dave. That was in about 2010, and he gave the company founder and co-owner Adriaan Went a year to think about it. They came to an agreement where Dave would sell back his shares in the company and oversee the business, but no longer handle the day to day management.

Before that year was up, however, Adriaan suddenly died, but with a new manager in place Dave was still able to step back and take on a role as company director, which he still holds today.

After leaving Ch'i Dave went for a complete change of profession, completing a 12 month investigations course at Unitec in preparation for becoming an SPCA inspector. He was unable to get a position with the SPCA, so instead spent two years

as an animal management officer (ranger) with Auckland Council.

He worked part-time at the council up to March this year, but when the job changed to full time shift work, he decided he wasn't keen on that.

"I decided to go back to what I know – administration," he says. When the A&P Show job became available he thought it sounded interesting.

"There are some great things to get my teeth into," Dave says. "There's stuff in there that I haven't done before."

He says the expectations for events such as A&P shows have changed, with people expecting things to be run more



• Dave van Dam at the Helensville showgrounds

professionally and shows having attractions they haven't seen before. He has already come across lots of ideas that can be developed, but says he "has to get my head around how the show works" first.

After his family, Dave's "first love" is motorcycles, particularly those from the late 1970s and 1980s. He gave up on faster, modern motorbikes in 2011 after a couple of accidents, one of them quite serious.

He's also a keen boatie and fisherman, and has plenty of work on his hands maintaining their 90-year-old Helensville home. Dave also plays the saxophone, and is a trustee along with Kaipara College deputy principal Nick Roberts of Real Music NZ.

Harcourts Helensville Realty Ltd

MREINZ

Licensed Agent REAA 2008



"Supporting Your Community"

Harcourts

HELENSVILLE REALTY LTD

HARCOURTS FOUNDATION

37 Commercial Road, Helensville P: 09 420 7663 E: helensville@harcourts.co.nz W: www.helensville.harcourts.co.nz

Parakai man bequeaths estate to Health Trust

Local man Ron Staples has bequeathed his entire estate – including his Springs Road, Parakai home – to the Helensville District Health Trust.

Ron died aged 80 at North Shore Hospital in October last year leaving no family or relatives, and left his estate to the trust specifically for use on capital projects. Following the sale of his house, his estate has already contributed \$300,000 to the capital works on Te Whare Oranga o Parakai.

“Seeing he was from Parakai we thought it appropriate to put some of the money into that building,” says trust chairman Dianne Kidd.

Dianne says she understands the bequest was made because Ron was very appreciative of the service he received from the Kaipara Medical Centre and other trust entities.

“It’s quite heart-warming to have something like this happen,” says Dianne. “We are enormously appreciative of it.”

The Helensville District Health Trust has set up guidelines to determine whether future projects are suitable uses for the

balance of Ron’s bequest.

The trust has set aside the balance of the funds in Ron’s name, and as it is a charitable trust it is tax deductible for anyone wanting to donate to the fund says Dianne.

Born in Dunedin in 1934, Ron moved around a lot with his mother before settling in Auckland. He travelled overseas in 1958, sailing to South Africa then working his way overland to Europe, where he worked as a carpenter and labourer at the World Fair in Belgium.

He traveled extensively before returning to New Zealand, including to Australia and Canada, where he developed a passion for searching for gemstones, which led to him establishing an impressive collection of greenstone, opals and other precious



• Ron Staples

stones.

Back in Auckland he worked as a carpenter for Haydn & Rollett, developing a reputation for building spiral staircases which still grace buildings around the city.

He eventually moved to Shelly Beach and then Parakai, where he looked after a large family of cats.

Calling local clubs & community groups

Helensville News needs you!

We will be profiling local clubs and community groups in our October issue, and would like to hear from any clubs, sports groups or other voluntary organisations. It’s a great chance to boost the profile of your club or group, and maybe increase your membership.

Once we’ve got your contact information, we’ll send out a brief questionnaire to get a few facts and figures from you - things like what the organisation/club does, membership numbers, how long it’s been running, and when meetings or events are held. Then we’ll put together a special feature later in the year covering all of that information.

Email is our preferred method for gathering this information - you can email us at: dave@helensvilleneews.co.nz with your club name and contact details. If email’s not an option, feel free to phone on 420 7215.

Alternatively, you can complete the questionnaire online right now by visiting: www.helensvilleneews.co.nz/questionnaire.



FREE 6 HOUR SESSION
for children aged over 3 Conditions apply

- 6 weeks to 5 years of age
- Dedicated, qualified teachers
- Interactive Literacy Programme
- Affordable fees
- 20 hours ECE & Winz help available
- Operating for 25 years in the community

Session Times:

- 8:30am to 3:30pm
- 7:30am to 5:30pm
- ½ day sessions for under 2s

130 Commercial Rd, Helensville
Ph: 09 420 7253

www.sunnydayspreschool.co.nz



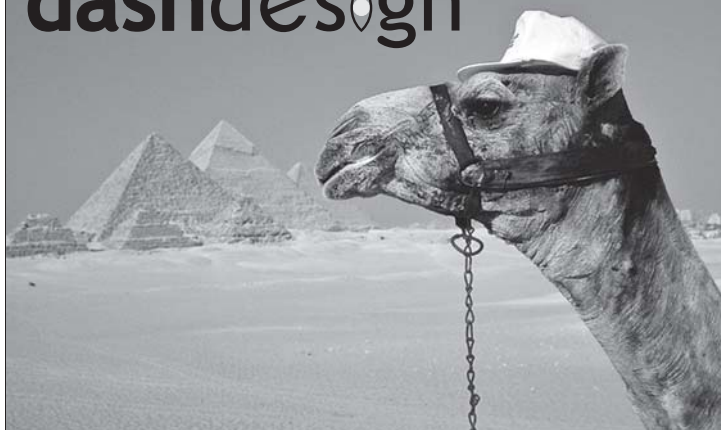
KUMEU PLUMBING LTD
Established 1974

- plumbing**
- roofing**
- solar heating**
- pump shop**
- pool & spa**
- filtration**
- drainage**
- woodfires**
wetbacks/radiators

Ph 420 9108

156 Main Road, Kumeu info@kpl.co.nz www.kpl.co.nz

dashdesign



... web site design
+ domain names + hosting

... desktop publishing

www.dashdesign.co.nz
Ph: 420 7215 Fax: 420 7216
email dave@dashdesign.co.nz



Sellers & Co | Lawyers Helensville Law Office

For all your legal services including:

- Wills & Trusts
- Estate Administration
- Property Relationship Matters
- Refinancing
- Commercial Matters
- Land Subdivision
- Residential, Rural & Commercial Conveyancing



69 Mill Road, Helensville

Ph: 09 420 9324

Email: admin@helensvillelaw.co.nz

ACCOUNTANT

UHY Haines Norton
Chartered Accountants

- Farm & Lifestyle Block Specialist
- Business Planning & Development
- Financial Analysis

OFFICE

MARK FOSTER

420 7972 021 220 5817

Office hours 9am - 5pm
2a Rata Street, Helensville
PO Box 17 Helensville

CALL Your Friendly Bin Company!

MR BINZ
Ph 09 412 9309
Quality Bin Service
Local experts!

www.mrbinz.co.nz | ph 412 9309

South Kaipara Men's Trust

Tama Tu Whanau Ora

Youth workers in the community, Parenting Through Separation, Counselling referrals for men, young men and their families.



Ground Floor, Alison McKenzie House
Corner Porter Cres & Commercial Road, Helensville

P: 09 420 8263 M: 021 139 0631

E: info@mfc.org.nz www.mfc.org.nz

Students' Te Whare Oranga garden

NorthTec students have built a korus-shaped garden which will provide fresh vegetables and herbs for the kitchen at Te Whare Oranga o Parakai.

The raised bed, built by students on NorthTec's Sustainable Rural Development programme, will eventually feature two korus, a herb spiral and a bench overlooking the gardens.

The first korus, now completed, consists of a 13-metre-long spiral made from recycled bottles - about 500 wine bottles and at least 800 beer bottles - enveloped with a concrete mix, then plastered with a sand and cement mixture.

their practicum either next term or next year.

The next free Sustainable Rural Development programme begins on Thursday, August 27 and will run until December 18.

Tutor Heidelind Luschberger says the plan for the programme is to plant a fruit orchard, and the students will be tasked with analysing the site, considering the layout of the land and the soil conditions, then designing a plan and selecting and planting the trees.

The group will also look at native plants and how to propagate them, choose the right plants for the conditions, and plant them

around Te Whare Oranga.

The students took part in the first course, mostly locals but including one from Makarau and two from Kumeu.

Heidelind now invites locals to "join the team, challenge yourself and learn something new."



• The just-planted first korus garden

The cost of the garden was covered by the course budget, which is funded by the government, although many of the bottles used were donated by Robbie from the Helensville Recycling Centre.

The programme, the first to be based at Te Whare Oranga, is now nearing completion, and winter vegetables previously seeded by the students have been planted into the new garden bed.

The group still needs to complete a propagation house and create a composting area.

The second korus and herb spiral is expected to be completed by students doing

Everybody can gain from it - you, our community and Te Whare Oranga."

Locals wanting to take part in the course must be aged over 16, able to commit to two days a week in class and to do a project in their own time - "and of course a love of gardening."

The course is free and leads to a level 3 NZQA qualification after completion, which opens pathways to further education in this field.

For more information or to enrol in the next course, phone Heidelind on 021 0230 6465. You can also visit www.northtec.ac.nz or phone 0800 162 100.



HELENSVILLE

Physical Therapy & Rehabilitation
CENTRE

We specialise in Sports Injuries

This year we are proudly sponsoring:

- Kaipara College students
- Helensville Rugby Junior members
- Kaipara Junior Touch
- Kaipara Netball Junior members
- Norwest United Soccer Junior members

ACC claims \$10 per treatment

Ph 420 8899

10 Commercial Rd, Helensville

**Sean Gray
Electrical Ltd**

- For all your electrical requirements
- Repairs, maintenance & new installations
- Overhead to underground conversions
- Underground services to new homes
- New alarm systems

0274 784 396

Ph/Fax (09) 420 5122, (09) 420 8978
email: seangrayelectrical@xtra.co.nz

Matariki at Woodhill School

Woodhill School celebrated Matariki with a day spent on Māori arts and crafts, including making raranga wrist bands, manu tukutuku (kites), soap carving and learning waiata.

The children rounded out the day with a shared hangi cooked on the school grounds. The hangi was lit pre-dawn by a small group of helpers, then later in the morning more helpers completed laying the hangi over the already heated irons.

School principal Jacqueline Maindonald thanks hangi helpers including Wiki, Arthur

and Te Warana Ratima, Ash Maindonald, Jeremy Meadows and Whaea Rosie for their early morning commitment, as well as the parents who provided the vegetables.



• Jeremy Meadows and Wiki Ratima lay the hangi

medical centre notes

Winter is well and truly here, and that is reflected in the number of colds, coughs and sore throats that we see, such as bronchiolitis.

Bronchiolitis is a viral infection in babies, most often between three and six months of age. Often it is mild, but can cause more severe problems in babies.

It is caused by a virus, and affects the small airways through the lungs called bronchioles. Babies that are more at risk of this being a more serious illness are premature babies, or ones with existing lung or heart problems.

It will start with a runny nose, and mild fevers for two to three days. Then the baby starts to cough and breathe fast and noisily with a wheeze. This can last several days and sometimes up to a month. If the baby is still feeding well, and not looking too unwell, and not breathing too fast, then the illness will often be self limiting and the baby will improve in time. Often these babies will need rests during feeding - the 'little but more often' feeding.

However, if the baby is struggling to feed due to the breathing, they can get dehydrated and have fewer wet nappies, and may need supportive measures at the hospital. If they are very unwell, they will be pale, blue around the lips and floppy, in which case they need urgent help.

Bronchiolitis does not mean they will go on to develop asthma (eight out of 10 wheezy babies under a year old do not).

To help prevent severe bronchiolitis, keeping the house warm, dry and smoke free, as well as breast feeding, have all been shown to offer protection to babies from bronchiolitis

- Dr Phillip Barter, Clinical Director



0800 VTS NTH

**Wicked Walks
Wednesday**

*Social dog walk at VN
Helensville 10.30am
weekly. All Welcome.*

Helensville Clinic Hours

Mon - Wed 8am - 5.30pm
Late Night Thursday till 6.30pm
Fri 8am - 5pm Sat 9am - 12.30pm

24 Hour Emergency

027 495 7986

24/7 GYM Helensville Fitness Centre

79 Mill Road
Ph 420 6303

*"Train when you want to"
at your local gym*

- FREE PROGRAMMES + ASSESSMENTS
- TRAINERS
- PERSONAL TRAINERS
- 10-VISIT CONCESSION

Classes: AbFit; Abs, Butts & Thighs; FitBox
Free for members, concessions, or \$10 casual



Follow us on Facebook

www.helensvillefitness.co.nz

53-65 Commercial Rd, Helensville. **Phone:** 420-8400 **Fax:** 420 7523 www.kaiparamedicalcentre.co.nz



PROUD TO BE OWNED BY OUR COMMUNITY

*Our Vision: To make the South Kaipara District
the healthiest rural community in New Zealand*

Dr Phillip Barter | Dr Aimee England | Dr Dean Foster | Dr Ivan Gannaway | Dr Hollie Shine | Dr Trinh Wright

We are a **Very Low Cost Access** practice. Adult fees for registered and funded patients, for a standard 15 minute daytime appointment, are just \$17.50. Ages 6 to 17 years are just \$11.50 and Free for under 6's.

Monday, Tuesday, Wednesday & Friday: 8am - 7:30pm. Thursday: 8am - 5pm. Saturday: 8:30 to 12 noon (urgent & emergencies only).

For after hours, urgent medical attention, please phone the practice number above. Your call will be answered by our triage nurse, who will contact the duty doctor. **FOR SERIOUS EMERGENCIES CALL THE AMBULANCE 111.**

Healthy food project

A project that aims to create healthier food places in communities around New Zealand visited Helensville for two meetings last week.

'Foodback' is the brainchild of senior research fellow Stefanie Vandevijvere and postgraduate research assistant Rachel Williams, who are also visiting communities in Birkenhead, Wairoa, Welcome Bay, and Nelson to get public feedback on the design of their Foodback smartphone app.

The app will source data on the healthiness of foods advertised and sold in local community settings such as schools, hospitals, supermarkets, takeaways, and sport clubs, with the results fed back automatically to local 'change agents' including local Government representatives, members of Parliament, schools, retailers, and sport clubs, in the form of health star ratings. For more information visit www.foodback.org.nz.



Civil Structural Geotechnical Environmental

Web: www.edc.co.nz

Tel: 09 451 9044

Hunt visits Parakai farms

Riders from the Waitemata Hunt enjoyed a stunning day hunting on two Fordyce Road, Parakai farms late last month.

A hunt on the properties two weeks earlier had to be cancelled because of wet ground conditions.

Being a mid-week hunt only 14 riders took part, but joint Hunt Master Charlotte Porter says weekend events normally attract between 40 and 70 riders.

Hunts traditionally chased the scent of a dead animal dragged across the ground, and in more recent years an artificial scent has been dragged. Now, however, scented water is simply squirted from a bottle onto the ground, making a trail for the hunt hounds to follow.

The club has around 35 hounds housed in a large kennel facility on a small lifestyle block at Ahuroa which the Waitemata Hunt owns. The Huntsman lives at the property to look after the hounds, and keeping hounds fed, fit and educated requires a significant commitment and investment.

Billed as the only

full time hunt in New Zealand, Waitemata Hunt began in 1949, and hunts predominantly on farms situated between Coatesville to the south, South Head to the west and State Highway 16 to the north, holding around 40 hunts each season, which runs from early March through to mid-July.

The club currently has 55 members, but non-club members can take part in hunts by paying a 'capping' fee for the day. As well as hunting, the club holds other equestrian events such as trail rides, overnight treks and hunter trials competitions.

More information about the Waitemata Hunt is available online at www.waitematahunt.co.nz.



• Adam Purchase (left) and Huntsman Nigel Tracey with the hounds

news tidbits

COLLEGE AT ROCKQUEST

Kaipara College musicians came away with two results at the recent RockQuest Auckland regional finals held at Auckland Girls Grammar.

Band 'The Second', made up of Aimee Way, Caelum Wiig, Patrick Lusty and Madeline Bowman, couldn't quite live up to its name, finishing third in the bands section. However, they also won the award for the best song. In the solo and duets section, Emily Dainty won the Best Musicianship award.

FIREWOOD FUNDRAISERS

Two local groups are selling firewood, both to raise funds for trips to Australia.

The Kaipara College Special Education Department is selling pine firewood for \$80m³ collected or \$100 delivered, and onion sacks of pine cones for \$5. Phone 420 8640 ext 815 or ext 834 to place an order.

And the Helensville Junior Rugby Club is selling pine for \$80m³ delivered, or \$120 for a 'hot' mix of pine, gum, blackwood and macrocarpa. Phone Amy on 027 787 6271 or email amymjr@hotmail.com to order.

MUSEUM VOLINTEERS

The Helensville Historical Society urgently needs more volunteers to keep its regular and special events going.

The museum needs two or three people on hand each day it is open - Wednesday, Saturday and Sunday afternoons.

There are also open days, visits from schools and tour groups, and special events like the annual A&P Show, Children's Heritage Day and Christmas parade when volunteers are needed.

Anyone able to help can phone museum administrator Lynn Millar on 420 7881, or email: _helensvillemuseum@xtra.co.nz.

WATSON MOTORCYCLES

• **ATV SERVICE CENTRE**

• **ALL MAKES & MODELS**

• **LOAN BIKE AVAILABLE**

e. watsonracing@hotmail.com

p. 09 412 2153 or 09 412 9430

a. 43c MAIN RD, KUMEU



Body language expert to hold Helensville workshops

Body language specialist and writer Steph Holloway is holding two series of workshops in Helensville next month.

The workshops will be run by the Women & Family Centre at the Alison McKenzie House, on the corner of Commercial Road and Porter Crescent.

'Say it Out Loud' is a body language recognition and de-coding workshop that aims to give people an edge in their relationships.

"Imagine knowing what people are really thinking, and being able to use what you know about body language to enhance your interactions with people," says Steph. "No other language is so useful on a day to day basis."

She says understanding body language – the micro-expressions, gestures and signals people unconsciously make - can help in interview situations, sales and customer service roles, in personal and work relationships and in challenging situations.

"Imagine having someone sussed out way before you engage them in conversation, using it to enhance sales and customer care, or your personal relationships."

The workshop will be held from 10am to noon on Tuesdays from August 4, with a cost of \$40 for four sessions.

Steph's 'Living and Working in your Element' workshop will take participants through a process she has developed to discover what "lights up your life", and how a person can adapt their days and time to get there.

It will be held on Thursday evenings from 7pm to 9pm, from August 6. This workshop series also costs \$40 for four sessions, plus \$15 for a course book. Topics covered will include uncovering your personality traits, body language, space clearing, minimalist theories, and differentiating yourself on a CV.

"Many people dream about living and working in their element, giving up the day job, and living their passion," says Steph.

Two years ago she founded Elemental Potential, a career development consultancy with a twist. She has been travelling New Zealand delivering her

workshops.

"It's a cliché, but it's still true. Life is too short to do something you're not really that into, and too precious not to make the most



• Steph Holloway

out of every single human interaction you have," says Steph.

"If you find work that you love, it's not like work. If you understand the people in your life better the communication will be clearer, resulting in exceptional relationships."

To book phone the Helensville Women & Family Centre on 420 7992 or email: info@hwfc.co.nz.

Governance vs management seminar

A low-cost professional development training seminar for the community sector is being held in Helensville this month.

Titled 'Governance vs Management: Roles and Responsibilities' it will be held from noon to 2pm in the Helensville War Memorial Hall on Wednesday, July 15.

Brought to Helensville by Auckland North Community and Development with support from Auckland Council, the Carol Scholes-presented seminar will explore the delineation of roles and responsibilities between governance boards and management, and how these relationships can work most effectively.

The seminar costs \$20 which includes lunch and resources. Locals wanting to attend should register online at: www.ancad.org.nz or email: info@ancad.org.nz.

SHOP FOR LEASE

No 2 Railway Street, Helensville.
(in the historic Helensville Railway Station)
Area. 80m² (approx.)

Rental, \$5,000 pa + GST.

A well presented premises which includes lunch room and toilet. Lots of parking.
Rental includes Rates and Insurance.

Enquiries to Alan Hargreaves
(Chairman, Helensville Railway Station Charitable Trust)
Ph 09 420 2063 or 0274 936 222



Come and try your friendly local motorcycle workshop. We service/repair quads, dirt and road bikes - plus we have parts and accessories.



Pickups and drop-offs available.
Ph Jason: 4207754 or 027 474 7441
e: sevice@helensvillemotorcycles.co.nz



Experience the Difference



Deal with the best team in town!

2.90% Commission
to \$500,000, 2% thereafter + GST

0800 18 88 80 www.burmester.co.nz

SALES and RENTALS

Helensville Residence

We are looking to buy half a hectare plus to build our new home. Or are you interested in selling your home? Can you help us please.

Contact Giovanni
Mob 027 504 1605

Lecture traces history of Bradlys

Long established Helensville family the Bradlys of Ohirangi was the featured family for the Helensville & District Historical Society's June Winter Lecture.

Steve Goeldner, who is married to Sharon Bradly, spoke to around 40 people in the Father Sakey Centre at St Joseph's Catholic Church late last month.

He covered the history of the family from the late 1600s in Sandwich and Deal in Kent, England, where Stephen Bradly was a successful shipwright who owned a number of properties.

He then traced the family through to the arrival in Auckland by 1842 of WWL Bradly, who was a coastal ship's captain, and who around 1867 moved to a sheep farm and orchard at Riverhead and was instrumental in the establishment of the rail link from Riverhead to Helensville in 1869.

He purchased land at Te Pua around 1884, and in the following decades his descendants purchased numerous other blocks to create a sizeable land holding centred around Puhunuhunu Road, now known as Bradly Road.

Today there are Bradly descendants throughout New Zealand, many in and around Helensville, where they are still well-known in farming circles.

The Bradly name has strong ties to the Helensville A&P Association, with Jack Bradly serving as president from 1938 to 1947, Richard Bradly from 1984 to 1986, and Jordan Bradly from 2012 to 2014.

Keith Cowper from the RSA will talk about celebrations for the 100 years since the start of World War 1, including the commemoration at Gallipoli earlier this year, at the Helensville & District Historical Society's July Winter Lecture.

The lecture will start at 2pm at the Father Sakey Centre, Helensville Catholic Church, on Sunday, July 19. Entry is \$10 (\$8 for Historical Society members) including afternoon tea.



• Steve Goeldner

Matariki programmes at Helensville library for holidays

Helensville Library will be holding Matariki-themed crafts every day during the July school holiday, from Monday, July 6 through to Saturday, July 18.

Matariki-themed storytimes - aimed at under-5s but open to all ages - will be held on Tuesdays from 10.30-11am.

There will also be Matariki-themed 'Wriggle & Rhyme' sessions on Thursdays from 10.30-11am, for under-tuos.

The library is also collecting items of baby knitting for Rodney Plunket, and senior librarian Anne Coppell says all donations will be gratefully received. For local children looking for the last few Countdown Super Animals cards, the library has hundreds for them to look through says Anne.

RD1 now Farm Source Hub

Helensville's RD1 farm supply store has been rebranded as a Fonterra Farm Source Hub - the first in Northland.

The change is part of a nationwide move that will see all RD1 stores rebranded over the coming years, and Fonterra selling buildings it owns and then leasing them back off the new owners. The Helensville store is one of the first RD1 stores to be sold and subsequently leased back.

Helensville Farm Source store manager Katy Baldwin says the team based there includes sales assistants, a technical sales representative and an area manager.

"Through this hub we want our farmers to have access to more support from people who have a good understanding of the regional conditions, council regulations and what's important to our farmers in the Helensville area," she says.

Formerly River Valley Hair & Beauty

NOW OPEN SUNDAY & LATE NITE THURSDAY

ORGANIC COLOUR now available

Ph 420 8567
86 Commercial Road, Helensville

ALL AGES

Parakai Springs 09 420 8998
swimschool@parakaissprings.co.nz

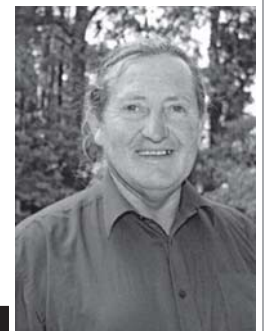
Bringing People and Property Together

HARVEYS Around the Kaipara

Rural Specialist and Local Farmer

NO OBLIGATION FREE APPRAISAL

Commission Rate: Our fees are \$500 plus 2.95% to \$400,000, plus 2% thereafter plus GST



Contact: **Greg Dempsey** Licensed Salesperson - REAA 2008

M: 021 237 6523 H: 09 422 4058 B: 09 425 1055 E: gdempsey@harveys.co.nz

Mahurangi Realty Ltd MREINZ - Licensed Agent REAA 2008. 19 Elizabeth St, Warkworth. www.harveys.co.nz

Matariki art exhibition



• Bernie Malizia with one of her paintings of local pa sites at last year's Art Centre Matariki exhibition

The Helensville Art Centre's 2015 Matariki exhibition runs from Saturday, July 4 through to Sunday, July 26, and is open on Saturdays from 11am-3pm and Sundays from 1pm-3pm, as well as during workshops on Tuesday, Wednesday and Thursday from 2pm-4.30pm.

Anyone who works in any Māori art form is invited to enter pieces for just \$2 per exhibited work. Late entries can be accepted.

For more information phone art centre co-ordinator Pauline Denton on 021 073 8372 or email her at: paulinekiwidenton@gmail.com.



Helensville Birthing Centre

TE PUNA WHANAU KI TE AWAROA

Helensville Birthing Centre is your local community facility. It provides a free service for women who choose to give birth in a low-tech environment. Alternatively, women who give birth in hospital can then transfer to us for the opportunity to rest and establish breastfeeding.

You are welcome to call in and have a look around, or browse our facilities online.

53 – 65 Commercial Road, Helensville

Ph: (09) 420 8747

Email: awright@helensvillehealth.co.nz

www.birthcentre.co.nz



Putting local health first • Te hau ora tua-tahi o awaroa

Healthy Helensville

Our vision: To be the healthiest rural community in New Zealand

Expressions of interest

The Helensville District Health Trust Board is currently taking expressions of interest from people in our community for Trustee positions. Community Trustees are for a one year period and Appointed Trustees for a fixed term. Our Board is made up of people who have relevant business experience and a genuine interest in the health and wellbeing of Helensville and the wider South Kaipara community which it serves. Governance experience would be a benefit.

With a vision to be the 'healthiest rural community in New Zealand' the Helensville District Health Trust affects real change via its business units and social enterprises including the Helensville Birth Centre, the Kaipara Medical Centre and Te Whare Oranga ō Parakai. If you'd like to find out more please contact Chairman Dianne Kidd by emailing admin@helensvillehealth.co.nz or calling 09 420 7878. New Trustees will be appointed at our next AGM in October 2015. To find out more go to www.helensvilledistricthealthtrust.co.nz

Seeking volunteers!

Your community facility Te Whare Oranga ō Parakai has now been open for over three months. We love seeing you and receiving positive feedback as we are moving forward with our services. We would love some help from our friends in the community to make this a great success. Perhaps you have a little time you would be able to volunteer to support us to run our successful market, greet visitors and support our part-time staff. In return you will be participating in our community and meeting lots of great people. If this sounds like fun to you contact Imelda King on 09 420 9983, email tewhareoranga@thrivekaipara.org.nz or leave your details with any of our staff.

Certificate in Money Management

Te Whare Oranga ō Parakai will host its first Certificate in Money Management (CMM) starting this month – FREE for all to attend. Beginning on Wednesday 22 July the course will consist of a three hour class per week for 20 weeks. Topics covered range from personal money management to investing in the sharemarket, wealth creation and protection, property investment and evaluating a business's value. With an aim to help you reach your financial goals and provide a secure financial future for you and your whānau, the course is provided by Te Wānanga o Aotearoa. To find out more, come along to the information sessions at Te Whare Oranga ō Parakai on Wednesday 1 July + Wednesday 8 July at 7.30pm or visit www.thrivekaipara.org.nz.

Helensville-Parakai footpath upgraded

The footpath between Helensville and Parakai has been upgraded at last.

Says Rodney Local Board chair Brenda Steele: "It's been a long time coming."

Brenda says the board had advocated for money to be made available for the project, and with Phelan Pirrie becoming chair of the Transport Planning and Infrastructure Committee, he was able to put enough pressure on to get the finances through, after discovering the work should be classed as maintenance rather than coming out of the new footpath fund.

Initially it was thought there would only be enough money to resurface half the pathway,

but Brenda says with the end of the financial year looming Auckland Transport "found an extra bucket of money" to enable the full job to be done.

"It needed to be cleaned up so it was useable, especially for mobility users and families with pushchairs etc," says Brenda.

The work involved clearing overhanging trees and shrubs, digging up badly damaged sections and laying all new asphalt. Timber handrails have been added to the pedestrian bridge at the entrance to Parakai.

The Te Awaroa Residents and Ratepayers Association had pushed for the path upgrade since the association was formed a little under two years ago, making it their number one priority project, says TARRA communications officer Holly Ryan.

"We lobbied Council and our Local Board, and identified this priority in a combined submission with the South



• The new Parakai footbridge railings

Kaipara Residents and Ratepayers Association and Kaukapakapa Residents and Ratepayers Association, to the Local Board Three-Year Plan last year."

Get your local business online from just \$50.00

on Helensville's local community website

- #1 in Google ranking
- Up to 17,000 unique visitors every month
- 100's of FREE community and event listings.
- News, events, attractions, polls, businesses.
- Business listings from just \$50 +gst per year.



Dash Design, Ph 420 7215

www.helensville.co.nz

Hospice Shop gets revamp

The Helensville Hospice Shop in Mill Road held a fun day on July 4 to launch its revamped, new look shop.

The interior of the shop has been completely re-designed and fitted out.

The store underwent the transformation over the past few weeks and held the community event to celebrate, complete with sausage sizzle, raffles, spot prizes and special in-store offers.

Around 25 volunteers work shifts at the Helensville store, but there is a currently a shortage of helpers to cover opening hours. Volunteers can sign up for as little as one, three-hour shift per week. Anyone able to help

should visit the manager in-store, or contact Hospice's Volunteer Services Manager Sarah Jeffs on 09 834 9750 or email: volunteerservices@hwa.org.nz.

Only 40 percent of Hospice West Auckland's annual operating costs are covered by the District Health Board, with the remainder raised through donations, grants, fundraising and income from the four West Auckland Hospice shops.



• Inside the redesigned Hospice Shop

MITRE 10 HELENSVILLE



FIRE UP FOR WINTER

50% off all flues sold with a wood fire.

Mitre 10 Helensville
41 Mill Road, Helensville
Ph: 09 420 8153

Opening Hours
Mon - Fri: 7:30am-5:30pm
Sat: 8am - 5pm **Sun:** 9am - 4pm
Locals Supporting Locals



HOT DEALS

Wood Fires

Valid from
May 31st - June 31st
while stocks last.

Free help offered for local community groups

Local community groups are being asked to submit projects for the BNZ bank's free 'Closed for Good' scheme.

Closed for Good will see the bank shut each of its stores on Wednesday, September 2 and up to 5500 BNZ staff will help community organisations with projects around the country.

"Last year in West Auckland there were 26 separate groups we helped," says BNZ CEO Anthony Healy, "with 91 of our people putting in a good eight hour day. If community

groups had to pay for that labour cost, you could say we saved the region about \$10,730 [based on the minimum wage]."

He is now urging West Auckland community groups to make the most of the bank's free labour and skills on offer.

Anthony says people know Closed for Good helps with projects such as fence painting, planting trees or cleaning up public spaces, but he encourages local community groups to think more broadly to make the most of how the BNZ team can help.

"We want organisations to look at all the skills our people can share. We can help by running a financial literacy or scam-savvy workshop, or writing a financial or marketing plan," he says.

Last year West Auckland projects included pre-season cleaning and maintenance at Muriwai Surf Club, and providing MS Excel and change management training for Plunket staff.

Submissions for this year's projects close on Friday, July 24. Projects can be submitted online at www.closedforgood.org.

from the frontline

It was brought to my attention that the designated mobility/disabled car space on Commercial Road near the ASB is regularly misused. This surprised me, and I started to monitor it.

Unfortunately over the last six weeks I have seen many vehicles parked in this parking space not displaying a mobility parking permit. So this is a friendly reminder to all people who in the past have parked in a mobility car space - any vehicle found not to be correctly displaying the correct mobility parking permit may be issued with a \$150 infringement notice or have their vehicle towed.

These car spaces are designated for mobility parking permit holders, to allow ease of access to places such as supermarkets, libraries and community hubs.

They are not for able bodied, selfish drivers who have decided their immediate needs outweigh those of a driver who has a legitimate reason to park in this car space. They are also not intended for people who believe they have a valid reason to park in these car spaces just because they can't walk very far.

If you think you are entitled to have a permit phone CCS Disability Action on 0800 227 2255. They can give you information on how to get a permit, and the special parking conditions that go with it.

If you do see a car parked in any mobility parking space and it isn't displaying a current mobility parking permit, photograph or note down the registration plate and a description of the vehicle. If the vehicle is parked in a private car park (for example a supermarket car park), you can give this information to the owner. If the parking space is on the road or in a public car park, report it to Auckland Transport.

It has also been noted that cars are parking on the broken yellow lines in this area. On the northern side of the pedestrian crossing the broken yellow lines have been put there specifically so motorists have a clear view of the pedestrian crossing. It is an offence to park on or within 6m of a pedestrian crossing. A \$60 infringement notice can be issued for this, and also for parking on broken yellow lines.

It is more prevalent too, on a Friday and Saturday evening when cars are parking on the broken yellow lines between Countdown and Rata Street. I am assuming these are people racing in to pick up their takeaways. Does that make it OK that it might only be for a quick five minutes? That is some pricey takeout if you include a \$60 parking infringement.

There are always available car spaces in the township and there is definitely no excuse for parking anywhere inconsiderately or unlawfully.

- Mandi Bell, Community Constable



Building Platforms • Utility Trenches • Ponds
Drainage • Drilling • Aggregate Supply • Tip Trucks
Excavators • Bobcat with Attachments

DRIVEWAY REPAIRS & RE-SURFACING

Call us for a FREE quote **SWALE EARTHMOVERS**
0800 4SWALE
or 09 420 8352. 103 Mill Road Helensville

SELECT HOME SERVICES

PEST CONTROL: Home or Business
WATER FILTRATION: Installations, Replacements & Repairs
HOME VENTILATION SYSTEMS: Suitable filter replacements
HEAT PUMP CLEANING: Heat pumps should be cleaned yearly
CHIMNEY & FLUE CLEANING: Professional clean & no mess
WATER TANKS: Cleaning & Repairs

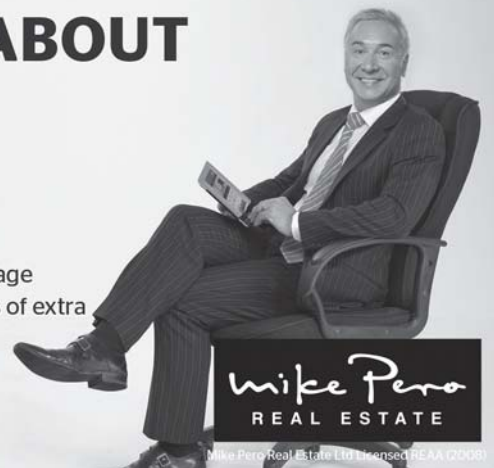
09 421 0463
www.selecthomeservices.co.nz

WHAT YOU MIGHT NOT KNOW ABOUT MIKE PERO REAL ESTATE

- ☑ We do FREE Market Appraisals
- ☑ Our commission rates start at 2.95% and reduce to \$1.95% beyond a threshold
- ☑ We do open homes for as long as you need them
- ☑ We have Mortgage Brokers ready to assist purchasers buy your property
- ☑ The average Mike Pero agent sells twice as many houses as the industry average
- ☑ We pay for a TV Commercial for every exclusive listing - reaching thousands of extra potential buyers across New Zealand!



Monique Rowe
09 945 2237 • 021 978 877 • monique.rowe@mikepero.com • www.mikepero.com
Helensville, South Head, Muriwai, Kaukapakapa, Waitoki, Wainui, Dairy Flat, Makarau, Ahuroa, Glorif, Tauhoa, Tapura, Kaipara Flats, Woodcocks, Rural Warkworth



B.J.WILSON BUILDERS LTD

alterations new work free quotes



Barry Wilson
37 St James Ave
HELENSVILLE

T | 420 8535
F | 420 8550
M | 027 494 4995

Major rebrand for shop

One of Helensville's most visited shops will undergo a major rebranding over the coming month.

Take Note in Commercial Road, run by Manu Patel for the past 14 years, will change to a Paper Plus Select store featuring the book and stationery chain's bright green livery and signage.

Paper Plus plans for all of its more than 50 locally-owned Take Note stores nationwide to rebrand as Paper Plus Select stores, although Manu says some of the smaller shops may become independent because of the cost associated with the refurbishment.

"It's a big investment," he says.

When the changeover to the Helensville store is finished, hopefully by the end of July says Manu, customers will notice a raft of changes in addition to the green exterior and new signage.

The inside of the store will be rearranged. Magazines will be moved to the front, and books will be displayed on shelves down one wall and on island shelving units. Manu says there will be around 70 percent more books on offer, as the store will carry all the Paper Plus core range.

An extra point of sale terminal will be installed, along with new fixtures and fittings, paint, carpet and lighting. Everything will match the Paper Plus corporate look.

"It will be a completely different look to the shop design," says Manu.

Customers will no longer be able to use their AA Rewards cards in-store, but the revamped shop will accept FlyBuys instead.

The shop will offer the same specials, prices and distribution as other Paper Plus stores, along with ranges of Paper Plus branded product. Manu says there will be specials four to five times a month.

There will also be a range of yet-to-be-decided opening specials which will run for at least two weeks from the official re-opening day. They will be advertised in advance.

Things that won't be changing are the full NZ Post Shop agency, the Lotto outlet, and the Kiwi Bank services, which Manu says is attracting three or four new customers daily since the ASB announced its closure.

All existing staff will be staying on.

Record book fair haul

With around 20,000 books on offer, the Lions Club of Helensville autumn Book Fair raised just over \$8000 – a record for the bi-annual event.

The club's Christmas Book Fair will be held over the weekend of November 21 and 22 in the Helensville War Memorial Hall.

Books can be donated throughout the year. The club can collect large amounts, and smaller lots can be left at Copy & Print in Commercial Road. For further information phone Chris Clark on 420 8527 or Yvonne Hilton on 420 8122.

Christine's
HEALTH SPA & BEAUTY

Now at Parakai Springs
www.christineshealthspa.co.nz
christines@parakaisprings.co.nz
0800 HOTPOOLS (468-766)
021 173 0801

HURRICANE FENCING SPECIALS

Fencing Standard (Waratah)
1650mm 7-hole **\$7⁵⁰** Ea
1800mm 8-hole **\$8⁵⁰** Ea

Staytight HT Netting
8-90-30 8 Line Wires
900mm high/100m roll **\$210⁰⁰**
300m Stay Spacing

Light Barred Gates
3.66m **\$125⁰⁰**
4.25m **\$151⁰⁰**

Valid to July 30th, 2015 while stocks last.

STIMELA GUMBOOTS

Stimela Gumboots are the award-winning gumboots designed in South Africa for mining and agricultural use and comes with a steel toe cap.



Just **\$49⁹⁵**

GAP 40

Fill your potholes
Price per m3, delivery extra or free loan
trailers available **\$76⁶⁰**

BuildLink
MEMBER

Oikoumene | FOREST LIMITED

1 West Street, Helensville | Ph 420-8706 | Fax 420-8476

Hall basement progressing



A community open day will mark the opening of the rebuilt War Memorial Hall basement.

"The work on site is progressing well, especially the inside work," says Rodney Local Board chair Brenda Steele.

"The basement has had the water proofing completed and work is progressing on the installation of the walls, partitions and services."

Exterior joinery was due for delivery early July, and the basement work is scheduled to be completed by the end of the month.

Brenda says there were a few problems with the outside work, with storm water pipes and manholes found to be in different positions to those shown on the plans.

"This is being addressed, but will be a cost to the project."

The date for the open day has yet to be set, but Brenda says it will be a chance for locals to look over the new facilities, and meet the staff of the three tenants - the Art Centre, the Emergency Foodbank, and the Helensville-Waimauku Family Budgeting Service.

Work is also progressing on building rooms on the hall's mezzanine floor and an associated staircase, and Brenda says she hoped that to be finished by mid July.

Borlotti Beans

We like to try out different vegetables each year, so looking through the seed catalogue a couple of winters ago we spotted these delightfully coloured beans and thought they would be interesting to grow.

They are now officially my favourite bean for lots of reasons.

Firstly you don't need a frame or poles for them to grow on as they are a bush bean; secondly because of the amazing colour of the pods, a dappled scarlett red, they fit really well into any part of the garden. We don't like to plant in rows or to have too many of any one thing growing en-mass as this just creates a bigger target for the bad insects. Borlotti plants look at home even within flower beds or dotted among



the border plants. (It is worth going to www.helensvilleneuve.co.nz just to see the colour photo). The third reason is they are very versatile.

You can pick them fresh, pod them and the beans can be simply steamed - they taste very similar to new potatoes. Or you can leave them on the plant until they are fat and pushing at the pods that enclose them. All you do then is pull the whole plant, tie a few together and hang them upside down under cover to allow them to dry. Once dry just pop the beans out of the pods and store them in the pantry in a jar. If you pick them young and fresh, pop them out of the pods and freeze the beans - they will only need a quick steam and they are ready to go.

If using them from dry, soak them in cold water for at least 4 hours, or better still overnight. For this recipe use a pot or casserole that can be heated on both the stove and in the oven.

■ Borlotti Beans

- 1 cup of dried borlotti beans.
- 1 medium onion
- 3 cloves of garlic
- 1 cup diced bacon. (Cleavers Edge in Helensville often have chunky off-cuts of their free range bacon)
- 1 standard can of tomatoes, roughly chopped so they are still chunky.
- 1 red chilli, chopped.
- 1 cup water
- 1/4 cup olive oil
- Fresh sage leaves, or thyme or rosemary (about 1/4 cup)
- Salt and pepper

Heat the pot on a low heat, add the oil, garlic, bacon, and onion. Saute for a few minutes then add the tomatoes, water and the beans. Cover and place in a 160° oven and cook for an hour. Remove and add the herbs of your choice and season with salt and pepper, return to the oven and cook for a further 30 minutes or until the beans are easy to mash with a fork. Add more water if needed, or remove the lid and cook uncovered if there is too much water.

Beans are best left to cool once cooked as they develop more flavour when reheated. Serve these beans with tortillas, grated cheese and sliced avocado.

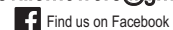
Please note: in last month's recipe for the feijoa cake, the amount of honey should read between 2 and 5 tablespoons of honey depending on your taste.

HELENSVILLE MOWERS

Open Mon - Fri: 8am to 5pm, Sat: 9am to 2pm

16 years experience in the outdoor power industry. Best advice on your next purchase, spares or service. Quality workmanship guaranteed.

7 Railway Street. Phone/Fax 09 420 8569
helensvillermowers@gmail.com



dizzy heights
TREE SERVICES

Dion Mayes
Qualified Arborist

All tree work • Pruning
Hedges • Council Approved
Full Insurance • Tree Felling
Tree Chipping Service

Difficult Trees a Specialty

FREE QUOTES

0800 349994
0800 DIZZYH
021 527219 / 09 4205352

Kaukapakapa Drainage

- Septic Tank Systems
- Drainage
- Truck & Digger Hire
- Pile Drilling
- Drain Unblocking

Reasonable Rates

30 Years Experience

Phone/Fax: 420 4149

Mobile: 021 926 301

Email: gary_lawton@clear.net.nz



**One Contractor
For All Your Needs**

Geoffrey Sawyers
0274 817 478 420 8738
Email: visionlandscapes@xtra.co.nz
www.visionlandscapes.co.nz



Landscape Design / Construction / Maintenance
Water Features / Lighting / Irrigation
Retaining Walls / Decks / Fencing / Pergolas
Planting / Plant Supply
Concrete / Stonework / Paving

info@creatingnaturelandscapes.nz
www.creatingnaturelandscapes.nz
Call Ben 021 285 4469 / 09 947 4298

■ A&PAGM

The Helensville A&P Association will hold its annual meeting at 7.30pm on Wednesday, July 15 at the Helensville show grounds. Anyone is welcome to attend, but only financial members of the association are eligible to vote.

■ KAUKAPAKAPA MARKET

The next Kaukapakapa Village market on Sunday, July 19 from 9am to 1pm will feature live music from Foster Watkinson on the tenor sax from 10am to midday. There will be the usual stalls, food from the market kitchen, barista coffee and more.

The same day in the historic Kaukapakapa Library from 10am to 1pm will be 'Story Time with Crispin Caldicott'. Children are asked to come dressed as their favourite book character to celebrate the re-opened library's first anniversary. Crispin will be reading from Tove Jansson's 'Moomin' books which have delighted generations of children. The magical stories take readers into the fantasy world of Moominvalley, and introduce the Moomins, a family of friendly white trolls, as well as charming characters like Sniff, Snufkin, and Fillyjonk.

For more information or to book a market stall contact Sarah 0274 831 542 or email: sarah1@maxnet.co.nz.

■ HELENSVILLE AGLOW

Helensville Aglow will meet at 7.30pm on Friday, July 31 at the Helensville Community Church, 40 Mill Rd, Helensville. The speaker will be Ngaire Harvey who relocated to Auckland following the Christchurch earthquakes. Ngaire will be talking on the topic: 'You were created to make a difference'. Contact Yvonne Bartlett, email ybartlett@maxnet.co.nz.

TRIVIAL PURSUITS

The Kaukapakapa Scout Group holds its annual Trivial Pursuits evening on Saturday, August 1 at the Kaukapakapa hall. Doors will open at 7pm for a 7:30pm start, with prize giving at 11pm. Tickets cost \$15 per person and teams can have from eight to 12 members. Supper provided, and the event is BYO as no bar will be provided this year.

Money raised through the event will go towards equipment for the Scout group. There will be recognition for the best dressed team, plus prizes, auctions and raffles.

Phone Kerry on 420 4003 or 021 036 9490 to book tickets.

■ COUNTRY MUSIC CLUB 30TH

The Helensville River Valley Country Music Club will celebrate its 30th birthday next month at its meeting on Sunday, August 16. The meeting will start a couple of hours earlier than usual and members will share a lunch. There will also be a birthday hat competition.

The club meets at the Helensville War Memorial Hall on the 3rd Sunday of each month, at the regular time of 1pm to 4pm.

Historical Society AGM

Chris Hagon of the Friends of Couldrey House spoke about the stately homes in England at the annual general meeting of the Helensville & District Historical Society in the Father Sakey Centre at St Joseph's Catholic Church on Friday, June 26.

classifieds & trade

■ Helensville Glass

24 hour service.
Ph: 420 8210

■ Helensville Wastewater

69 Mill Rd, Helensville
Ph: 420 9042
Email: hlwastewater@xtra.co.nz

■ Pump and Filter Services

Pump Repairs, Tank Cleaning
Phone Nick: 021 111 6593

Helensville News - Publication Information

■ AUGUST 2015 deadline: Friday, 17th June 2015

ISSUE DUE OUT TUESDAY, AUGUST 4th 2015

Editorial Enquiries, Letters to the Editor and Advertising:

Dave Addison - Ph: 420 7215 • Mobile: 021 178 5568 • Email: dave@helensvilleneews.co.nz

Free Subscriptions to Online Edition:

Email: subscribe@helensvilleneews.co.nz

2015 issue dates and deadlines:

Due out: August 4th	Copy by: July 17th	Due out: Oct 6th	Copy by: Aug 20th*
Due out: Sept 1st	Copy by: Aug 14th	Due out: Nov 3rd	Copy by: Oct 16th

* Note extra-early October issue deadline

Editor & Publisher: Dave Addison, Helensville News Ltd, PO Box 59, Helensville 0840. **Editorial:** Dave Addison, 420 7215.

Design, Subediting & Layout: Dash Design, 420 7215. **Printing:** Rob McCorkindale, Print Matters, 0274 740 657.

Copyright: No material in this newspaper may be copied or reproduced without the publisher's permission.

Disclaimer: Every effort has been made to ensure the accuracy of information in this newspaper, but the editor and publisher accepts no responsibility for any errors or omissions.

Letters to the Editor: should be kept to around 250 words and may be edited as space dictates.



www.facebook.com/helensvilleneews

www.helensvilleneews.co.nz

HAY

- New season's, shed stored.
- \$12 conventional bales
- \$120 large rounds (=10 bales)

420 7215
021 178 5568



(Formerly Parakai Motordrome)

Quality auto service and
repair at country prices



WOFs - Brakes - Suspension

90 Mill Rd, Helensville
Phone 420 8177

BURNETTS



' MOBILE
0274 924 494

FIRST AUTO ELECTRICAL

Full Mobile Service

Specialists in Auto Electrical & Air Conditioning
Servicing Vehicles, Heavy Machinery,
Farm Equipment & Marine

Workshop ⚡ Parts ⚡ Accessories

Ph 09 420 8181
Mob 021 689 700

