

Bottle drive shows refund system would work

More than 4000 drink containers were brought in for recycling when the Helensville Community Recycling Centre hosted a community 'bottle drive', offering 10 cents a container for up to 100 containers per person on August 12.

The event was part of a nationwide response to a lack of government action on introducing a Container Deposit System (CDS) in New Zealand, despite 90 percent of local councils nationwide supporting the proposal, says Recycling Centre site manager Treena Gowthorpe.

The proposal would give people a few cents back for each bottle (plastic or glass) or aluminum can they returned for recycling.

Re-introducing the system, which was widespread in New Zealand in the 1970s and 1980s, could increase recycling rates of drink containers from 43 percent to around 95 percent as demonstrated in Germany and parts of Australia says Treena.

It would also significantly reduce the level of rubbish in parks and on beaches. Many children who came to the Recycling Centre for the bottle drive had cleaned up a strip of roadside or a park to collect their containers. One family alone collected 500 drink containers from the roadside.

Kiri Abraham, who volunteered on the day, says: "it was fantastic to be able to reward these budding eco-warriors with a

crisp \$10 note, and a great demonstration of how rubbish can become a resource.

"In Australia, the Scouts use bottle drives as their main fundraising source, making up to \$25 million each year. In New Zealand it could be a great opportunity for community groups who rely on donations and fundraising to survive."

"It was very clear to us that it was the kids leading the way in this project," says Treena.

"Parents told us that at home it was the kids pestering them to help them clean up an area of rubbish so that extra pocket money could be made.

"We also had the support of the Kaipara College environmental group 'Kaipara Care', helping us with sorting and counting. They brought a real sense of community and enthusiasm to the day."

People wanting to support the national call for

container deposit legislation can sign a petition at kiwibottledrive.nz, or call in to the Helensville Community Recycling Centre to send a free 'message in a bottle' to the Associate Environment Minister Scott Simpson asking for the legislation to be reintroduced in New Zealand.



• Bethany French (left) from the Kaipara Care group at Kaipara College and Kiri Abraham from the Recycling Centre with some of the 4000-plus drink containers received on the day

Arts in the Ville returns next month

Helensville's popular three-day Arts in the Ville festival will be back this Labour Weekend, October 21 to 23.

It will closely follow the successful formula of last year, with local artists opening their studios to the public, and exhibitions at pop-up galleries around the town. New this year will be an auction on the Saturday evening to raise funds for the Helensville Women & Family Centre.

Popular returning exhibitors such as Jeff Thomson, Moth, and Marmalade Hats will be joined by a number of new artists, including potter Louise Wild, whose works will be on show in the Whimsical Garden. Works exhibited will range from paintings and sculptures to pottery, works in fibre, and hats. Around 40 artists will be involved in total, with 10 open studios.

Arts in the Ville is a chance for locals to meet artists in their working spaces, talk to them about their work, and purchase pieces of art direct from the artist or from one of the pop up exhibitions. There will also be some interactive exhibits so visitors can try out various art styles.

Maps of the venues will be available prior to the event and on the day.

For more information visit: www.artsintheville.blogspot.co.nz or email Jo Dixey at: dixdean@clear.net.nz

Inside...

- Help with Mt Tabor move ... Pg 3
- World Vision concert ... Pg 4
- New organiser sought ... Pg 5
- Rural supplier merger ... Pg 6
- Helensville candidates ... Pg 8-9
- Nadia Lim to visit ... Pg 10

PREMIER

One stop - we do the lot!

- COLLISION REPAIR
- MECHANICAL REPAIR
- TYRES

Call today for an appointment or FREE quote!

PH 09 420 8806

www.tyrepower.co.nz

Tyrepower

mta



www.facebook.com/helensvillenews



@HelensvilleNews

www.helensvillenews.co.nz

BUYING OR SELLING PROPERTY?



Jana Mills

Mob: 021 509 990
AH: 09 420 9953

PRESTIGE
REAL ESTATE

Jana Mills Real Estate

Parakai Springs
swim school



ALL AGES

Parakai Springs 09 420 8998
swimschool@parakaisprings.co.nz

N2K *Koast to Koast*
Electrical Ltd



TOSHIBA

**Your local
Toshiba Heat
Pump Installer**

Ph: 420 2028 Mob: 021 417 992
koast.electrical@stratanet.co.nz

For all domestic and commercial electrical work

Need a local
Electrician...

Give Ryan Brenchley a call
on 027 420 6545

Residential, Commercial and Industrial
www.kinetic-electric.co.nz



KineticElectrical®
smarter

editorial

I remember as a kid, collecting old bottles and taking them to the local dairy to get a five cent (I think) refund, which would then be spent immediately on lollies.

I'm showing my age here - this was when you could buy sweets individually, and we'd stand at the shop counter for ages deciding whether to have three of those for 1c, or four of those for two cents (I can't imagine shopkeepers having the patience these days!)

The reason for this trip down memory lane? Our front page article, which proves that a bottle (and can) deposit scheme can still work. I'm not sure why the government isn't being proactive in reintroducing such a scheme. It seems like a no-brainer. Not only does it let people raise a bit of cash, but it helps clean up the streets as well.

I realise nowadays we have reasonably decent recycling programmes which take care of a large percentage of drink containers, but as the Helensville Community Recycling Centre's bottle drive shows, there are plenty that don't make it in to the recycling.

Maybe the government has just put it in the 'too hard' basket (along with removing the GST on fresh fruit and veges...)

It was heartening to see two local community groups working together (page 3) with the Lions Club helping out Mt Tabor to provide the necessary accommodation for Judith Williams, who has autism and needs higher levels of care as she ages. Both organisations provide vital services to our local community and deserve our full support.

Lastly, you have a chance to catch up with what our candidates for the Helensville electorate have to say (page 8) before deciding who to vote for. One thing is for certain - it's going to be an interesting election.

- Dave Addison, Editor

CAB needs more council support

The Auckland City Council needs to do more to support the Citizens Advice Bureaux in Rodney district, says Rodney Local Board member Brenda Steele.

Brenda was guest speaker at the Helensville CAB's AGM in August, held at Te Whare Oranga ō Parakai.

She says she has been working on getting the council to improve its relationship with the CAB, which she says is a vitally important service, especially as the population changes with more people moving from the city to a rural setting who may not know where to go for services.

She says the CAB is a "touchpoint for the community" and the council should "up the ante" and do more than just fund the service.

Says Brenda: "there hasn't been a lot of scope for it to feel like a two-way relationship so far" and she hopes that will improve.



• New life members Ralph Martin and Marama Stead

The Helensville and Wellsford offices are the only CAB bureaux in the Rodney district.

The statistics back up Brenda's comments, with the Helensville CAB seeing a 24 percent increase in enquiries over the last year. The most common inquiry was

about local travel and tourism and comes after the CAB office took over the local Information Centre earlier in the year when the Art Stop Cafe closed down.

The other most popular queries are about adult and community education, consumer matters, and income support.

Long-standing CAB volunteer and board member Marama Stead was elected the bureau's new chairperson, and along with Ralph Martin she was made a life member of the organisation.



MethSolutions

CERTIFIED SAMPLER

Jane Spafford

Book a test:
0800 638 4522
(Quote ID# 140363)

www.methsolutions.co.nz



APPROVED WASTEWATER LTD

Wastewater design
Tank supply, installation, servicing
Drainlaying

Phone: 420 9042
69H Mill Rd, Helensville
info@approvedwastewater.co.nz
www.approvedwastewater.co.nz

Lions help with Judith's move to Mt Tabor Farm

The Lions Club of Helensville has provided financial assistance for a member of the Mt Tabor community to move from private rental accommodation to a cottage at the Mount Tabor Farm.

Judith Williams has autism, and will turn 68 this year.



• Judith Williams

Since she arrived in Mt Tabor in 1994 Judith has lived in her own flat in Garfield Road under the auspices of the Mt Tabor Trust. She's been supported by Mt Tabor staff and many local Helensville women over the ensuing years, receiving help preparing meals and with her domestic chores.

As she gets older Judith's care needs will grow, and moving into the cottage will enable carers to provide her with 24 hour support as her needs change.

The money received from the Lions Club enabled the cottage to be modified to better suit Judith's requirements.

"Due to Judith's autism she likes to be in her own environment," says Penny McKenzie, administration manager for Mount Tabor Trust

"However, now she is getting older she needs a lot more care. Therefore the cottage at the farm was modified so she can still have her own space, but be closer to support [people] who are living at the farm.

"We thank all the many women in

Helensville who have worked with Judith, and the Lions Club members who have also supported Mt Tabor Trust since we first set up house here in 1983," adds Penny.

Mt Tabor Trust recently become a probationary member of the International Federation of L'Arche, which has 149 community in 37 countries. Founded in France in 1964, it aims to empower people with disabilities to play vital and active roles in society.

As a member of that international organisation Mt Tabor is now known as L'Arche Mount Tabor.

Mt Tabor has 29 live-in residents (called core members) in Helensville and in Henderson. However there are many others from the local community who go

along to the daily activities the organisation runs, such as at the Helensville Art Centre.

The farm has two houses as well as Judith's cottage.

Pizzas and movie at Waitoki

A family fun evening featuring pizza and a movie will be held at Waitoki Hall on Saturday, October 7, starting 6.30pm.




Gluten-free pizzas will be cooked on-site in a pizza oven by Vernerdi Bakery, and after everyone has eaten the film 'Legend of the Guardians: The Owls of Ga'Hoole' will be screened.

Tickets cost \$10 for adults, \$5 for children, and under 10s are free. There will also be a \$20 family pass covering two adults and up to four school age children. Funds raised will go towards hall upkeep.

To book phone Lisa on 420 5455 or David on 420 3301.

LOCAL SHOP LOCAL

Don't cut corners!
Local is Best



The Best Gift Shop in Town

44 Commercial Rd Phone / fax 420 8336

WATER Wagon 1
Graeme Waterson





Like us on
facebook

0800 KKK H2O

09 420 4688
027 280 2630

'Pure Spring Water Carriers'



RDi

Rodney District Insurance

**Locally owned and operated
Insurance Broker**

◆ Home and Business
◆ Vehicles
◆ Marine

Ph: 420 2798
Mob: 022 363 2377
Email: m.kreling@rdi.nz
www.rdi.nz

Looking for quality residential care for your older loved ones in the Helensville/Rodney area

Our kind, considerate staff are available to care for your loved ones 24/7, and our new purpose-built hospital and dementia wing is now fully operational.

**We offer
Quality of Care,
Quality of Life**

CRAIGWEIL HOUSE
- CARING FOR THE OLDER PERSON -
COME TO VISIT AND VIEW OUR AMAZING FACILITY AT
143 PARKHURST ROAD, PARAKAI
EMAIL: INFO@CRAIGWEIL.CO.NZ



**CALL US NOW!
Phone
420 8277**

Previously
United Travel



From flights, package holidays, tours, and cruises. Let us help you discover the world.

Embrace life. Call us today.

YOU Travel Helensville

60 Commercial Road, Helensville
(09) 420 8860
karen.reilly@youtravel.co.nz
www.youtravel.co.nz



- For all your electrical requirements
- Repairs, maintenance & new installations
- Overhead to underground conversions
- Underground services to new homes
- New alarm systems

0274 784 396

Ph/Fax (09) 420 5122, (09) 420 8978
email: seangrayelectrical@xtra.co.nz



Gumboots
Early Learning Centre

Marvellous Mud

www.gumboots.ac.nz
1157 Peak Road R D 2 Helensville, ph 411 9038

Local World Vision concert

A free concert featuring a top kiwi musician will be held at the Helensville Christian Life Centre (HCLC) in Commercial Road on Saturday, September 23 as part of World Vision's 'ANight of Hope' series.

And the concert has a local connection, too.

When Jesse Boyce from World Vision contacted HCLC pastor Tim Forlong, Tim discovered that while Jesse had never lived here himself, his family had emigrated to Helensville from remote Pukapuka Island in the northern Cook Islands in the 1900s, and he still has relatives living here.

In fact while the pair were talking in a local cafe, one of those relatives, Mili Sipa, happened to walk past.

The concert, which starts at 7pm, will feature New Zealand singer-songwriter Nathan King.

Nathan began his musical career with his band Zed, which had two multi-platinum albums. He has toured Australasia, the United States and Europe with the likes of Robbie Williams, Coldplay and Seal.

In 2001, he was nominated as Best Songwriter and won the Best Male Vocalist at the New Zealand Music Awards, and in 2008 released his first solo album.

Nathan has travelled to India, Tanzania and Rwanda with World Vision.

The concert will also be a chance for locals to hear from and meet Charles Kabena, a former World Vision child

sponsorship recipient.

Charles was born into extreme poverty in Malawi. His family couldn't afford to send him to secondary school, but thanks to his World Vision child sponsorship he received a school uniform and shoes, and a full scholarship to cover his school fees.

Charles passed his secondary exams, went on to university, and worked as a web



• Jesse Boyce (right) with local relative Mili Sipa

and radio journalist. He now works as a communications officer at World Vision in Malawi. His passion is encouraging young people to stay in school so they can become professionals like him. He buys a daily newspaper for the children at his former primary school to read, and partners with others to pay school fees for children who can't afford it.

The World Vision Night of Hope series of concerts are being held around New Zealand.

Art Kaipara exhibition

Around 90 new works of art by local artists make up the Art Kaipara Members Exhibition, on show all this month at the Helensville Art Centre.

The exhibition features paintings and sculpture from both established artists and locals who are just starting out on their creative journeys, including works by Jeff Thomson, Andrew Denton, Reg Laurie, and Leda Daniel. Art Kaipara currently has 51 members.

A special opening was held on Friday, September 1, and the exhibition will run until Saturday, September 30. Opening hours are: Tuesday to Friday, 10am to 4.30pm and Saturday 10am to 2pm. The Art Centre is closed Sundays, Mondays and public holidays.

For more information phone 021 158 6859, or visit the Art Centre website: www.artcentrehelensville.org.nz

McLEOD MOTORS

Your friendly local team

6 Railway Street, Helensville
Email: mcleodmotors@outlook.co.nz
Ph: 420 8633



Find us on Facebook

- WOFs
- All Mechanical Repairs
- Auto Electrical
- Tyres & Batteries
- Stockists of 'Total' lubricants

Nancy calls time as organiser

After eight years organising the Cancer Society's local Daffodil Day collection, Helensville's Nancy Head is calling it a day.

This year's fundraiser on Friday, August 26 was her last.

She says at 80 years of age she's "getting too old for keeping track of it", but says she will stay on as one of the collection volunteers.

Nancy's role has been to contact existing volunteers, find new volunteers - "and blackmailing family and friends" she jokes. She also puts out collection boxes in several locations around Helensville, and on Daffodil Day itself goes around the four Helensville collection areas to check the volunteers have turned up for their shifts.

Ideally 32 volunteers are needed for the day, manning donation stations in two-hour shifts from 8am to 4pm outside Countdown, Paper Plus, Unichem, and the bakery near the Grand Hotel.

She says some of the people manning the collection stations are in their 90s, and it would be good to get some younger people to take on the role - which as she points out isn't very onerous at just two hours, one day a year.

Nancy, who has lived in Helensville for almost 10 years, has also been heavily involved with the local St John Ambulance for the last seven years. She is on the area committee, and was instrumental four years ago in setting up the St John Op Shop in



• Nancy with this year's collection display

Commercial Road.

Anyone wanting to take on the role of Daffodil Day organiser for Helensville should contact Gwenda Dowler with the Cancer Society in Auckland, email: gdowler@akcansoc.org.nz or phone 09 308 0160 ext 351.

Many submissions on Local Board plan

Rodney Local Board received almost 1600 submissions on its draft plan. Board members will update the plan before it's adopted in its final form this month.

Consultation forms asked a number of specific questions, which garnered mixed responses.

Only just over 50 percent of respondents agreed with a proposal to charge Rodney residents a targeted transport rate, which would be used to pay for transport improvements, park and ride facilities and public transport.

A proposal to support communities to influence the look, feel and function of local town centres and to be actively involved in

improving them met with much greater support, with over 80 percent of submissions agreeing with the proposal.

About three quarters of the plan submissions supported Rodney Local Board's proposal to prioritise funds to develop greenway plans for walking, cycling and bridle connections.

And almost 70 percent of submissions were in favour of a proposal to improve the quality of harbours and waterways by focusing on riverbank and waterway planting and livestock exclusion, as a higher priority than other environmental work.

All the public submissions are available on the Auckland Council website.

**SELLING
PROPERTY
WITH
STRATEGY**



Book a free 60 minute strategy session with Darren today.

Darren Ryder
021 307 014
darren.ryder@bayleys.co.nz
darrenryder.com

darren ryder
BAYLEYS

LICENSED UNDER THE REA ACT 2008

Carrfields

Livestock

JASYN YEARBURY

Your livestock representative
living locally

- ▲ Sale facilities across NZ
- ▲ Forward contracts
- ▲ On-farm clearing sales
- ▲ Dairy service bull plans
- ▲ Live export
- ▲ Livestock valuations
- ▲ Dairy herd marketing & sales
- ▲ Prime stock drafting & marketing

Contact Jasyn:

M: 027 655 6551

H: 420 8857

E: jasyn.yearbury@carrfields.co.nz



KUMEU PLUMBING LTD
Established 1974

- plumbing
- roofing
- solar heating
- pump shop
- pool & spa
- filtration
- drainage
- woodfires
wetbacks/radiators

Ph 420 9108

156 Main Road, Kumeu info@kpl.co.nz www.kpl.co.nz

**KAIPARA
CONTRACTORS LTD**

YOUR LOCAL **BUILDER**

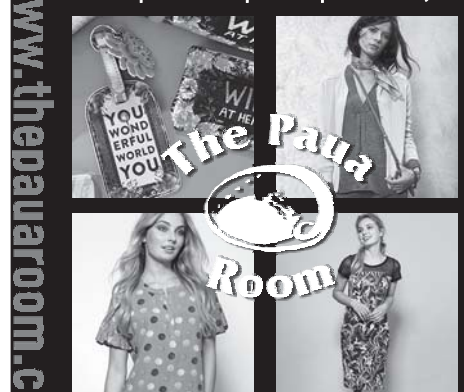


STUART HUME

Experienced & professional
Full range of building services

Ph: 420 5782 Mobile: 027 275 2115
kaiparacontractors@gmail.com

Art | Fashion | Gifts | Jewellery



www.thepauaroom.com 6 Commercial Rd, Helensville. Ph 420 9898

Sellars & Co | Lawyers Helensville Law Office

For all your legal services including:

- Wills & Trusts
- Estate Administration
- Property Relationship Matters
- Refinancing
- Commercial Matters
- Land Subdivision
- Residential, Rural & Commercial Conveyancing



69 Mill Road, Helensville

Ph: 09 420 9324

Email: admin@helensvillelaw.co.nz

ACCOUNTANT

UHY Haines Norton
Chartered Accountants

- Farm & Lifestyle Block Specialist
- Business Planning & Development
- Financial Analysis

OFFICE

MARK FOSTER

420 7972 021 220 5817

Office hours 9am - 5pm
34 Commercial Rd, Helensville
PO Box 17 Helensville

VENUE FOR HIRE

The Kaipara Memorial RSA located in Commercial Road, Helensville offers its services for functions of up to 100 people.

We offer catering, full bar service including special licence, a recently decorated warm function room, and a dance floor with space for the band, right in the middle of Helensville.

Ideal for moderate sized weddings, birthdays, anniversaries, funerals, family reunions.

Ph: 420 8888

Email: kaipararsa@xtra.co.nz



PEST CONTROL: Home or Business
WATER FILTRATION: Installations, Replacements & Repairs
HOME VENTILATION SYSTEMS: Suitable filter replacements
HEAT PUMP CLEANING: Heat pumps should be cleaned yearly
CHIMNEY & FLUE CLEANING: Professional clean & no mess
WATER TANKS: Cleaning & Repairs
09 421 0463
www.selecthomeservices.co.nz

Merger + expanded premises boost for rural supply company

Staff at one of Helensville's biggest rural supply companies are enjoying their spacious, newly rebuilt premises.

PGG Wrightson in Mill Road launched its greatly expanded shop in August after merging with the company's Kumeu branch.

The original Wrightson shop behind Helensville Mitre 10 has been increased in size by about 70 percent to 1300sq.m by taking over the building previously occupied by Kumeu Hire.

The outside yard has also been boosted in size, with up to half a hectare of land now available for storing bulk farm items like posts and troughs.

The building itself has been divided into two. The main retail section has been thoroughly modernised, including the installation of a drop ceiling, new offices, air conditioning and lighting, and with considerably more space available for displaying the greatly increased range of stock. It has a definite retail shop feel, rather than the warehouse vibe it used to have.

The balance of the building has been left as a warehouse for bulk storage.

The store is now headed up by manager Pete Bailey, formerly of the Kumeu branch, with Joe Heng in charge of the agricultural side of the business and Craig Lamb, another Kumeu 'import', running the Fruitfed horticultural division.

The merger combined two PGG Wrightson offices with different focuses - whereas Helensville was more traditionally farm-based, Kumeu was aimed more at the lifestyle and horticultural sectors. Now, those different aspects have been brought together under one roof.

"It enables us to meet customer needs better," says Joe. Helensville can now

service the traditional agricultural and horticultural markets as well as lifestyle specialists and commercial clients he says.

No staff lost their jobs with the merger, although a couple decided to move on elsewhere. The enlarged branch now employs 10 people, though that is expected to grow to 12.



• From left: Pete Bailey, Craig Lamb and Joe Heng in the revamped store

Helensville now services pretty much all of Auckland north of the harbour bridge up to Warkworth, and coverage even includes Waiheke Island.

Joe says the property's owner, Fred Day, has been fully behind the shop's expansion.

Kaukapakapa cricket

Registration for senior players for the 2017/2018 season are now open at Kaukapakapa Cricket Club.

The club holds a 40/40 Rodney Men's Championship on Saturdays, and a twilight 20/20 league on Wednesdays.

Anyone wanting to play, or to enter a team in the twilight league, or to sponsor one of the teams, should phone Kris Allen on 022 531 1723 or email: kristianallen@gmail.com.

You can also find Kaukapakapa Cricket Club on Facebook.



We specialise in Sports Injuries

Proudly sponsoring:

- Kaipara College students
- Kaipara Netball junior players
- Helensville Rugby junior

\$12 ACC treatments for the above

Late nights:

Monday 7pm, Tuesday & Thursday 8pm

Ph 420 8899

10 Commercial Rd, Helensville. www.physioflex.co.nz

Finance available

Whether you're buying from a dealer, privately or online MTF Silverdale can help.

Talk to us today

09 421 0335 or 022 FINANCE
Cnr Milner Lane & Millwater Parkway
mtf.co.nz/silverdale

Terms, conditions and lending criteria apply.



Preschoolers visit ambulance station

Children from Sunny Days Early Learning Centre in Commercial road visited the Helensville St John Ambulance station in Rata Street recently.

Station officers Anita and John welcomed the four-plus year old children and showed them the ambulance and their emergency equipment. The children loved being able to see inside the ambulance and got to try out the hydraulic stretcher bed and other equipment.

The children were thrilled with their visit and learned a great deal, says Sunny Days' manager, Leesa Shultz.

The visit was an impromptu one - the children were walking up the road and saw the station open, then were called over by the station officers.

It was a timely visit, as the children at Sunny Days have been learning about the importance of emergency workers in the community and what they do.

They have been dressing up and roll playing, and they have made a fire house and fire truck from natural resources at the centre.

"We had a special visit from 'Amby' the ambulance and Sue from St John," says Leesa. "They came to the centre and

brought in lots of equipment and roll played an emergency scene with the children."

A fire crew and police will visit Sunny Days soon as part of the programme.



• *Elijah Reid and Ella Baker try out the ambulance stretcher bed*

medical centre notes

Tremors can occur at any age, and most commonly affect the hands, head and legs, but occasionally the voice.

The most common (four in 1000) tremor is Benign or Essential Tremor, also called familial tremor. This often runs in families, and is a tremor that is most noticeable when hands are held out, or when trying to hold a cup etc. It often gets worse the more the person focuses on the tremor.

Anxiety can make the tremor worse, and can make handling objects tricky. This is not a serious illness, and most people cope normally themselves, though occasionally medication such as beta blockers are used to see if that can help.

Parkinson's disease is a less common cause of tremor (one in 1000). This is due to a lack of dopamine in the brain, causing the nerves that regulate movement to slow down. This causes stiff and slow movements, a shuffling gait, slow speech, an expressionless face, and difficulty starting movements such as turning or writing.

The tremor in Parkinson's is often a rubbing of thumb and index finger together, and is worse when resting the hands, but when using the hands the tremor improves - unlike the Essential/Benign Tremor. And unlike the Benign tremor, this needs input from neurologists and medication as it can slowly worsen over time.

- Dr Phillip Barter, Clinical Director



HELENSVILLE BOWLING CLUB

38 Awaroa Road, Helensville



- New carpet green for all-year-round playing.
- Indoor bowls during winter.
- Petanque now played, all welcome.
- New players and social members welcome.

For more information Ph 09 420 8316 or email: helensvillebowls@gmail.com

'Bowls is not just for Oldies'

24/7 GYM Helensville Fitness Centre

79 Mill Road
Ph 420 6303

"Train when you want to"
at your local gym

- FREE PROGRAMMES + ASSESSMENTS
- TRAINERS
- PERSONAL TRAINERS
- 10-VISIT CONCESSION

Classes: AbFit; Abs, Butts & Thighs; FitBox
Free for members, concessions, or \$10 casual

 Follow us on Facebook
www.helensvillefitness.co.nz

53-65 Commercial Rd, Helensville. Phone: 420-8400 Fax: 420 7523 www.kaiparamedicalcentre.co.nz



PROUD TO BE OWNED BY OUR COMMUNITY

Our Vision: To make the South Kaipara District the healthiest rural community in New Zealand

Dr Phillip Barter | Dr Aimee England | Dr Dean Foster | Dr Hollie Shine | Dr Trinh Wright | Matthew Woollett

We are a **Very Low Cost Access** practice. Adult fees for registered and funded patients, for a standard 15 minute daytime appointment, are just \$18.00. Under 13s are free, and ages 13 to 17 years are just \$12.00.

Monday, Tuesday, Wednesday & Friday: 8:30am - 7:30pm. Thursday: 8:30am - 5pm. Saturday: 8:30 to 12 noon (urgent & emergencies only).

For after hours, urgent medical attention, please phone the practice number above. Your call will be answered by our triage nurse, who will contact the duty doctor. FOR SERIOUS EMERGENCIES CALL THE AMBULANCE 111.

Helensville Electorate candidates

Helensville News asked the candidates contesting the Helensville Electorate in the General Election on Saturday, September 23 to write 200 words on any subject they wished - introducing themselves, party policy, local issues etc. Their responses are printed below in alphabetical order.

■ **Hayley HOLT**
Green Party Candidate

New Zealand is the best.

But we are not acting like the best right now. Climate change is the defining issue of our generation but our carbon emissions keep growing (up 19 percent in the last 9 years). A third of our native birds are under threat, we've allowed experimental seabed mining, mining in our national parks, over 212,000 kids living in poverty. We cannot swim in our rivers, and we top the world in how many native species are at risk of extinction.

National have had nine years to fix the infrastructure issues that see us stuck in our cars for hours or unable to find an affordable house. They have ignored the issues until they have become a crisis.

But I believe in us. With a Green Party voice in government we will do our bit to combat climate change. We will clean up our rivers and our beaches. We will build a



thriving, sustainable economy. We will invest in a world class public transport system, starting with rail from the CBD to Helensville.

The Green Party needs your vote so New Zealand can deliver for "all" New Zealanders and our environment.

Authorised by: Gwen Shaw – L1, 17 Garrett St, Wellington

■ **Chris PENK**
National Party Candidate

I'm Chris Penk, your National Party candidate to succeed Sir John Key in Helensville.

It's been great to meet so many of you during the election campaign – hearing about the issues that are important to you has been a real highlight. Thanks for giving me a pretty clear idea about your expectations. If you see me out and about in the coming weeks, please come and say hi!

Some of you have asked about my personal situation: my wife and I live down at



the Waitakere end of the electorate with our dog and we're expecting to be joined by a baby boy in a few weeks' time.

I've been working as a lawyer until recently, as a partner in my own firm, developing strong skills in analysis and advocacy. Before that, I'd served as an officer in the Royal New Zealand Navy and Royal Australian Navy, a leader and team player in tough maritime environments.

I'll be a strong, dedicated local MP here in Helensville, ensuring that you and your family are well represented. If you have any questions I'd love to hear from you, so please get in touch!

Authorised by Chris Penk, Unit 5B, 84 Main Road, Kumeu

■ **Helen PETERSON, JP**
NZ First Party Candidate

I am a long time resident of Kumeu. Professionally I have worked as a Legal Annotator, a Senior Negotiator for the ACC, an Abuse and Neglect Field Officer for 'Age Concern', and as a coordinator for 'Communicare' supporting the elderly and disabled. I currently manage Advocacy

• To page 9

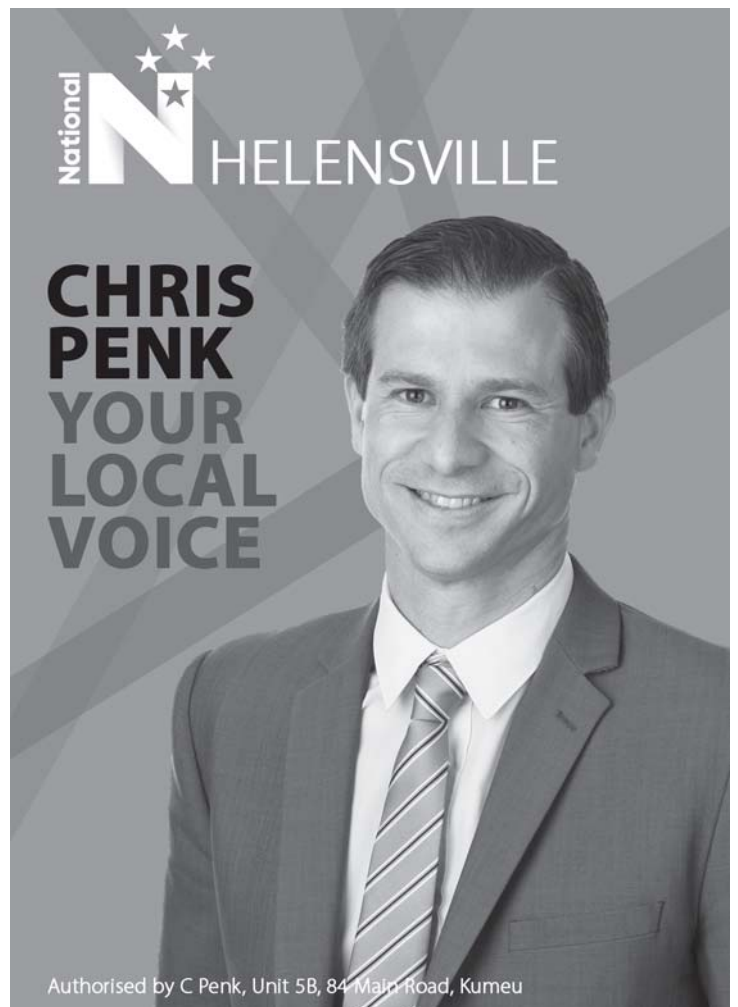


“With a Green heart in government, we can do our bit to **clean up our rivers**, combat **climate change** and build a **thriving, sustainable, high-wage economy.**”

Hayley Holt, Green Party Candidate for Helensville

PARTY VOTE GREEN

Authorised by Gwen Shaw, L1, 17 Garrett St, Wellington



Authorised by C Penk, Unit 5B, 84 Main Road, Kumeu

have their say

• From page 8

Services at Spectrum Care Trust. I have also owned my own tourist business.

As the Advocacy Leader I stand up for people with disabilities, ensuring their rights are recognised. I also provide training for the organisations' employees and families around rights, legal protections, complaints and the Privacy Act. New Zealand First stands for equal rights for all.



My best work has come out of fighting bureaucratic government agencies that have violated the rights of vulnerable adults.

I am a Justice of the Peace, serving in the electorate which is most rewarding.

I am standing for Helensville because I love the region. It's my home. It is an electorate that boasts exceptional wineries, beaches, forests and produce, which people come from far and wide to sample.

Helensville needs someone who will focus on transport, infrastructure issues, housing, employment, crime and getting businesses up and running.

Authorised by: Helen Peterson – 90 Matua Rd, Huapai, Auckland

■ Kurt TAOGAGA Labour Party Candidate

On September 23, 2017, Helensville has a choice.

We can choose to face up to our housing crisis. We can choose to clean up our waterways. We can choose to invest in transport choice. We can do so much better.

Or we can just stick with the status quo.

The Labour Party has always been the party that builds. We have committed to getting this housing crisis under control, so first-home buyers can get on the property ladder. We have committed to making our rivers swimmable, so our children can enjoy a summer dip like we did. We have committed to providing transport alternatives up SH16, so you can opt out of congestion on the North-Western motorway.

As a local lad, the success of Helensville is at the heart of my campaign. Give two ticks to Labour and ensure a voice in Parliament that has a genuine concern for the well-being and values of the Helensville area.

We have a transformational leader made for the challenges of the 21st century. We will



be proud to have Jacinda Ardern as our Prime Minister. We are a young country. We are a beautiful country. We are a smart country. We can do better.

Let's do this!

Authorised by: Andrew Kirton, 160 Willis St, Wellington

Time to get elegant for afternoon tea

Helensville's entry for the 2017 Auckland Heritage Festival will be an 'Elegant Afternoon Tea' to be held at the Father Sakey Centre, Kowhai Street on Saturday, September 30 from 2 pm.

Tables seating about five people each will be set in classical style with fancy table cloths, elegant silver and china and dainty food plates. Tea and coffee will be served by maids with tea trolleys.

There will be musical accompaniment and a slide show to entertain the guests. The event is being billed as an opportunity to enjoy afternoon tea similar to what our grandmothers would have provided at their 'At Home' parties.

Anyone wanting to attend should register through Helensville Museum by phone, 420 7881, or email: helensvillemuseum@xtra.co.nz. The cost will be \$15 per person.

Helen Peterson of Helensville Candidate

Your local candidate committed to community, living in, and working for, the betterment of the Helensville electorate



NEW ZEALAND
FIRST

hpeterson.nzfirst@gmail.com

Authorised by H Peterson 90 Matua Road Huapai Auckland 0810

labour.org.nz

Kurt Taogaga
for Helensville

Labour

Party Vote



Labour

Authorised by Andrew Kirton, 160 Willis St, Wellington

Building Platforms • Utility Trenches •
Ponds • Drainage • Drilling •
Aggregate Supply • Tip Trucks •
Excavators • Bobcat with Attachments



DRIVEWAY REPAIRS & RE-SURFACING

Call us for a FREE quote
0800 4SWALE **SWALE**
EARTHMOVERS
or 09 420 8352. 103 Mill Road Helensville

EDC
ENGINEERING DESIGN
CONSULTANTS

Sub-division Specialist

Contact us on 09 451 9044 or team@edc.co.nz
www.edc.co.nz

The **quality** of our work might
suggest we're more expensive....

The truth is quite different.

Talk to us today about our rates.



Phone: 09 420 7663
37 Commercial Road, Helensville 0800
Tandem Realty West Limited Licensed Agent REAA 2008

Harcourts
Tandem Realty West

Play receives acclaim

Local play *Te Waka Huia* is receiving wide acclaim and attention as it tours Auckland and Northland.

Written by local playwright Naomi Bartley and set in Helensville, it was inspired by the Brynderwyn bus crash of 1963. 15 mostly local people were killed in the crash involving a bus load of people returning from Waitangi Day celebrations where the Queen had been in attendance.

It's a fictional story that centres on a couple of Kaipara College students and their relationship with an old Maori man who lives on a derelict bus in a paddock on the outskirts of town, and touches on issues of belonging and the meaning of home.

The play had its first public performances last month in New Lynn to packed audiences.

A number of survivors of the accident were in the audience for the opening night performance.

Naomi says from the moment she first embarked on this project over five years ago, she has felt a sense of duty to do justice to those survivors' stories and to treat the tragedy with the respect and sensitivity it deserves.

"I was thrilled when one of the whānau members connected with the tragedy told us that seeing the play was the first time he was

able to think about the crash without being burdened by the sadness of it all," says Naomi.

"Instead, he remembered the good times of being on the bus with his friends and singing and laughing, and I'm immensely grateful that our work has gone some small way to heal his grief."



• Isaac Te Reina and Chye-Ling Huang play Kaipara College students Jack and Emily. Photo: Stellanova Photography

Naomi and director Chris Molloy were interviewed at length on Radio New Zealand's arts programme *Standing Room Only*, available to download on the RNZ website.

The play will be performed at Kaipara College on September 29 and 30. Tickets are \$20 (concession \$15) and are available from iTICKET.

Evening with Nadia Lim

New Zealand celebrity chef Nadia Lim is coming to Helensville.

The event has been organised by Helensville Paper Plus Select and will be a fund raiser for Helensville Primary school.

It's part of a three-month, nationwide tour by Nadia (right) to promote her new book, *Let's Eat!*

While she won't be cooking at the event in the Helensville school hall, there will be drinks and snacks, a question and answer session and book signings. Copies of her books will also be on sale.

General admission ticket holders will get a glass of wine or a hot drink, samples of food from the cookbook, and a goody bag.

VIP ticket holders will also receive a personally signed copy of Nadia's new book, a 30-minute mix and mingle with Nadia prior to the main event, and a VIP goody bag.

Paper Plus Select owner April Ashton hopes to sell 300 to 350 tickets for the event. When *Helensville News* spoke with her in late August, she said the \$75 VIP tickets were already selling out - although at that stage she didn't even have the physical tickets to give people.

General admission tickets are \$20, and the event will be held on Tuesday, October 24. The VIP mix and mingle starts at 6.30pm with doors opening for the main event at 7pm.

To purchase tickets phone Paper Plus Select on 09 420 8646 or email: helensville@paperplussselect.co.nz.



making the difference

Is there someone special who has done something that's made a difference for you, your family or our town? To nominate someone, write to: Nicky Horsbrough, Harcourts Helensville, 37 Commercial Road, Helensville 0800 or fill out the form online at: <http://nickyhorsbrough.harcourts.co.nz>. The lucky recipient will receive a \$100 voucher for a local business of their choice.

Our September recipient is Maria Paul from Waioneke School, who has chosen a \$50 voucher for The Café and a Countdown \$50 voucher, which she is gifting back to her nominators.



• Maria receives her vouchers from Nikki

Maria was nominated by two Waioneke School pupils, Lilia and Sophia Mills.

Lilia says Maria "helps us with our lunch orders. She does lots of things around the school. She is always smiling. She helps us when we are sick, she helps organise our trips, she takes the photos for our school newsletter.

"Mrs Paul also took my sister home when she had a head injury and couldn't reach mum on the phone.

"I know Mrs Paul is involved in the community outside of school; that is why we think she deserves a treat because she makes a difference in lots of other people's lives."



Helensville Birthing Centre

TE PUNA WHANAU KI TE AWAROA

Helensville Birthing Centre is your local community facility. It provides a free service for women who choose to give birth in a low-tech environment. Alternatively, women who give birth in hospital can then transfer to us for the opportunity to rest and establish breastfeeding.

You are welcome to call in and have a look around, or browse our facilities online.

53 – 65 Commercial Road, Helensville

Ph: (09) 420 8747

Email: bookings@helensvillebirthingcentre.co.nz

www.birthcentre.co.nz



Putting local health first • Te hau ora tua-tahi o awaroa

Healthy Helensville

Our vision: To be the healthiest rural community in New Zealand

New Event Manager welcomed



Amy Wood and Kaumatua Arahi, Cherie Povey.

The Helensville District Health Trust held a mihi whakatau or welcome for its new Event Manager, Amy Wood, who took up the newly created role in the middle of August 2017.

Amy says she's looking forward to getting more involved in the community where she's lived for the last three years, since moving here with her husband, Daniel Wood, who grew up in Helensville. Amy has a Bachelor of Business Management Studies with 12 years' experience in marketing, event and project management. She will oversee the South Kaipara Harvest & Artisan Market as well as attract new business and events to Te Whare Oranga o Parakai, the community centre owned by the Helensville District Health Trust.

Trust General Manager, Sue Miller, says "having Amy join the team creates a wonderful opportunity for us to explore how we can support the South Kaipara community with new ventures, by hosting

Market happenings

There will be a couple of special South Kaipara Harvest & Artisan Markets before the year is out. At the market on 29 October the Helensville District Health Trust will be having a garage sale – so come along for some real bargains. We're also having a Twilight Christmas Market on Thursday 7 December. Stallholders and performers need to book early to secure a spot at this market so please email amywood@helensvillehealth.co.nz.

events where businesses, or individuals can trial their products at very little cost." She says the Trust has been swamped with ideas from the community and now that Amy is on board those ideas will be able to be followed through.

If you want to talk to Amy about any ideas she can be contacted on 021 142 3029 or amywood@helensvillehealth.co.nz.



Your Health Online

Secure access to your personal health information, anytime, anywhere, from any device

You can:

- Book an appointment
- Order repeat prescriptions
- Email your healthcare team
- View your latest lab results
- View your immunisation records
- Receive recall & appointment reminders



Using our patient portal is easy - Just ask us.

Kaipara Medical Centre

53-65 Commercial Road
Helensville 0800

Phone: 09 420 8400



Experience the Difference



Deal with the best team in town!

2.90% Commission

to \$500,000, 2% thereafter + GST

0800 18 88 80 www.burmester.co.nz

SALES and RENTALS

local board matters

■ Council Finances Part 3

Over the previous two issues I endeavoured to explain how council spends its budget; this month it's about the Local Board.

For those of you who were here during Rodney District Council days, before 2010, we didn't have Local Boards and it's taken a while for people to get their heads around what their function is.

We have a shared governance model between Councillors (the 'Governing Body') and Local Boards.

Councillors are there to focus on the 'big picture' regional issues, develop Auckland-wide strategies and plans, and make decisions on regulatory activities.

Local Boards on the other hand represent local communities and provide leadership, make decisions on local activities, allocate local discretionary funding, provide local input on regional strategies and plans, and advocate to the Council Controlled Organisations and councillors on behalf of their community.

The Rodney Local Board has a total budget of just over \$23 million this year. Our budget is split into two main categories: a Capital Spend of \$7.6 million, which as previously discussed is money council borrows to invest in assets and pays back with rates; and an Operating Spend of \$15.4 million, which funds community services, local parks, environmental development and planning.

The budget is allocated into three different types of spending:

1. 'Asset Based Services', which is spending on maintaining and renewing the assets we already own, such as the more than 100 public parks in Rodney (the most of any local board), the sports fields and playgrounds, libraries, halls and community centres. Each year there is also money for adding assets required to meet needs based on factors like population growth, such as playgrounds or community facilities. This makes up the largest portion of our budget, and spending in the parks space uses up the most money given our huge network of public spaces.

2. 'Governance Services' is the part of our budget allocated to running the local board; this is about \$1m per year.

3. Finally, there is 'Locally Driven Initiatives' funding. This is the part of our budget we have direct control of and is used for activities we prioritise as part of our three-year Local Board Plan. Currently we have prioritised spending into three main areas: town centre improvements, a waterways improvement fund to assist landowners in riparian planting and protection to improve the health of our harbours, and funding for greenways - or 'trail ways' - which will improve the connections between our communities.

You can find more information on this by Googling 'Auckland Council Annual Budget 2017'; our section is from page 197. Or you can call into your nearest council service centre for a hard copy.

Next month I'll bring you an update on what's happening with our town centres and planning.

Questions, comments or need help on an issue? Email me at: phelan.pirrie@aucklandcouncil.govt.nz or message me at [m.me/phelanpirrie](https://www.facebook.com/phelanpirrie).

- Phelan Pirrie, Deputy Chair, Rodney Local Board

Tennis Club open day

Helensville Tennis Club will hold an open day in conjunction with Helensville Athletics and Helensville Lions Club at Rautawhiri Park on Sunday, September 24 from 2pm to 4pm.

There will be a sausage sizzle, afternoon tea, and lots of information on the clubs available, as well as tennis coaches on site.

The Tennis Club will also hold its Christmas Heirloom fundraiser on Wednesday, September 20, carpooling to the Ellerslie Christmas Heirloom Shop, where there will be demonstrations on how to make a wreath, lights, tree decorating, making bows and garlands, and the chance to shop. \$25 per person, limited to 30.

The club is looking for local businesses to enter teams in its Business House mixed doubles tournament, which runs from Term 4 through to the end of term 1 next year and caters for all levels of player.





HELENSVILLE **COMMUNITY** RECYCLING CENTRE

Open Thurs to Sun 8am to 4pm
helensvillecommunityrecycling@gmail.com

Milestones

Not for Profit
Charitable Trust
Community Organisation

Ph: 022 430 3622

In our first two years as a Recycling Centre we:

- Increased our local employees from 3 to 12
- Increased our waste diverted from landfill from 55% to 71%
- Paid \$364,729.25 back into Helensville economy (*Local wages, local goods and services*)
- Converted 10 Helensville businesses to recycling
- Doubled the volume of people using the site



Where to From Here?

The Helensville Community Recycling Centre with the support of the Rodney Local Board and Auckland Council has managed to reverse the decision to subdivide and sell the 35 Mill Road site, which was our temporary home after asbestos was found at their old site. The Recycling Centre will now make 35 Mill Road their permanent home.

Plans are in place to develop the site into a park like setting with a community enrichment area, which will include:

- A community vegetable garden and orchard
- A larger reuse shop
- A café
- An education area
- Worm farm and compost bins for kitchen waste drop offs
- An artists upcycling facility



Sew, Sip, Sing

What: Bring your sewing machine and join a fun crew making funky reusable bags for sale in Helensville.

Where: Hall next to the library

When: Thursday 21, Sept 6-9pm

Why: Lets start the ball rolling on helping Helensville transition to a plastic bag free town.

Register now

Plastic bag free

from the frontline

Being stopped by police may seem tiresome, and all of us have our own opinions on why police enforce traffic laws - whether the issuing of compliance, warnings, infringement notices or a summons to appear in court.

As well as being part of the government's Safer Journeys strategy, Helensville Police are members of this community too, and our view is that you and your families deserve the right to travel safely on our roads and as part of this community that includes us and our families as well.

Safer Journeys is a New Zealand Government strategy created by the National Road Safety Committee.

Its purpose is to improve road safety, reducing death and serious injuries. It looks at our country's entire road system to improve safety with safer road networks, safe speeds, safer vehicles and safer road use. The strategy accepts that people make mistakes; however its intention is to reduce the outcomes of crashes so that they don't result

in deaths and serious injury.

Unfortunately New Zealand lags behind many other countries in road safety. Every year, hundreds of people are killed on our roads, and according to the Safer Journeys website nearly 2900 people are seriously injured.

Police play an important part in making New Zealand roads safer through enforcement of traffic laws including alcohol and speed regulations; promoting good driving practices; and road safety education.



Police activity focuses on the driving behaviours we know are most likely to cause crashes, injuries and deaths:

- Speed - To make roads safer for all New Zealanders. Decisions about speed enforcement are based on evidence. You might feel safe driving a few kilometres over the limit but extensive research from New Zealand and overseas shows small increases in speed raises the crash risk for all road users.
- Drink driving – police carry out around three million breath tests a year. We take an intelligence-led approach by targeting times and locations when drink driving is more likely.
- Drug impaired driving – compulsory impairment tests are carried out on people who show signs of driving under the influence of medication or illegal drugs.
- Safety belts – a quarter of people killed in road crashes are not correctly restrained. Police check people are wearing their safety belts, and that children are in the right car seats, whenever they stop a vehicle and at specific checkpoints.
- All risky driving behaviour – this includes people who drive erratically or hold up traffic. Calls from the public are an important way for us to identify these drivers and respond appropriately.

As part of routine road policing activities, police will:

- Go out in force during high risk periods such as long weekends, when greater numbers of drivers are on the roads.
- Follow up on high-risk drivers, particularly repeat alcohol/drug impaired offenders and repeat speed offenders.
- Take action to prevent repeat offending.
- Target high risk locations and roads to alter driver behaviour.
- Enforce illegal street racing legislation, targeting repeat offenders and known locations.
- Enforce low speed zones around schools to reduce harm to young people.
- Check licences to make sure drivers have the skills and knowledge to drive safely
- Inspect vehicles we stop to ensure they are safe.

- Mandi Bell, Community Constable

College musical a hit



The cast of Kaipara College's recent musical, Rock of Ages, sing up a storm during the popular show, which drew standing ovations and audiences of up to 350 people. More than 40 students and staff were involved in the school's first musical in 16 years, led by senior drama and music students and directed by Steve Lunt and Greg McLaren.

Adent
dental

Alex Aubone

BDS

☎ 09 281 5005

📍 3 B Matua Rd, Huapai

✉ info@adent.co.nz

🌐 www.adent.co.nz

WE'VE GOT IT ALL!

- ▶ Fencing Supplies & Gates
- ▶ Landscaping & Garden Supplies
- ▶ Farm Supplies
- ▶ Timber & Roofing
- ▶ Tools & Hardware
- ▶ Insulation

Always
Great Deals
in store!

BuildLinkWest
Buy Better Build Better

1 West Street, Helensville | Ph 420-8706 | Fax 420-8476

Here's to mud in your eye

When children from Gumboots Early Learning Centre in Peak Road wanted to celebrate International Mud Day they had one problem - no mud.

So they came up with a simple solution - they made their own, by simply jumping up



• Dorothy Pinnell loving the mud

and down on the same spot over and over.

"We didn't have a specific mud patch that was ready for mud day, [but] it really didn't take long at all to make one," says Gumboots centre director Genelle Bailey.

"It's one thing to wallow in mud that is waiting for you, but quite something else to make your own patch!

Waitoki market

Locally grown olive oil and macadamia nut products from Kaimua Farm will feature at the next Waitoki market on Saturday, October 7 from 8.30am to midday.

There will be homemade and preloved bargains, bric a brac, baked goods, preserves, and plants. New stall holders welcome, phone Gill on 420 3301 or email: waitokihall@gmail.com.

"The kids absolutely love it. The teachers are always surprised by who loves getting muddy; it's not always the ones you think would, and the ones you would expect to go crazy sometimes find themselves standing back," says Genelle.

And jumping and sliding around in the mud isn't just fun - it's actually good for you says Genelle, pointing to recent research which has shown that dirt contains microscopic bacteria which stimulate the immune system and increases the levels of serotonin in our brains, an endorphin that soothes, calms, and helps us to relax.

"Scientists say regular exposure to the bacteria may help reduce a child's vulnerability to depression.

"In short, playing in mud makes you happier!"

Genelle says playing in mud can make you healthier too.

"Science shows that today's sanitized world is actually contributing to increased levels of childhood allergies and asthma. Exposure to dirt and germs works to prime a child's immune system to prevent allergies.

"Yes, it's actually healthy for children to get muddy!

"I'll confess there is probably research to find the bad bacteria in mud that could be harmful, but in our case it was a homemade mud patch in a paddock that hasn't had animals for over 20 years.

"Until proven otherwise, we'll continue to have fun in the mud and take the balanced approach to life - a big part of our philosophy," she says.

Band in RockQuest finals

Kaipara College two piece band O-Boy! made it to the NZ SmokeFree RockQuest finals, held at Auckland Girls Grammar on September 2.

In preparation for the final, O-Boy! made up of Bryony Roberts on vocals and bass and Bianca Bailey on drums and backing vocals, spent a day at Neil Finn's Roundhead studio where they recorded one of their competition pieces, 'Sweet B'.

O-Boy! was one of just nine band acts from more than 4,500 student musicians from around the country who made it into the finals.



Come and try your friendly local motorcycle workshop. We service/repair quads, dirt and road bikes - plus we have parts and accessories.



Pickups and drop-offs available.

Ph: 4207754 or 027 474 7441
e: sevice@helensvillemotorcycles.co.nz



Jane Spafford

PH: 021 109 2756

rentals.spafford@xtra.co.nz
www.spaffordproperty.co.nz

We manage properties with dedicated property managers



Dion Mayes
Qualified Arborist

All tree work • Pruning
Hedges • Council Approved
Full Insurance • Tree Felling
Tree Chipping Service

Difficult Trees a Specialty

FREE QUOTES

0800 349994
0800 DIZZYH
021 527219 / 09 4205352

Kaukapakapa Drainage

- Septic Tank Systems
- Drainage
- Truck & Digger Hire
- Pile Drilling
- Drain Unblocking

Phone/Fax: 420 4149

Mobile: 021 926 301

Email: gary@kdrainage.nz

Reasonable Rates

Over 35 Years Experience



**One Contractor
For All Your Needs**

Geoffrey Sawyers
0274 817 478 420 8738
Email: visionlandscapes@xtra.co.nz
www.visionlandscapes.co.nz



Landscape Design / Construction / Maintenance
Water Features / Lighting / Irrigation
Retaining Walls / Decks / Fencing / Pergolas
Planting / Plant Supply
Concrete / Stonework / Paving

info@creatingnaturelandscapes.nz
www.creatingnaturelandscapes.nz
Call Ben 021 285 4469 / 09 947 4298

community tidbits from town and around

■ NUKE UKELELE BAND

The popular 'Nuke Ukelele' band will play at the Kaipara Memorial RSA on Friday, September 15, from 7:30pm until 10pm. Tickets available at the door cost \$25 for adults and \$15 for children under 16 years. Discounted tickets available from the RSA up until Wednesday, September 13. Meals will be available from 5:30pm to 7:30pm.

Winner!



This is 5-year-old Senesi-Marua Harris, winning the Year 1 girls' race at Helensville Primary School's junior cross country on August 25.

Photo: Rochelle Gillespie

■ VOICES FROM THE PAST

Oral histories from Kaukapakapa's past will provide information on early families, their lifestyles and significant events when they are played at the Kaukapakapa Library on Sunday, September 27 from 10am to 1pm.

Courtesy of the Helensville Museum, they will include the late Frank Henley talking on early Kaukapakapa, Wyn Jordan reminiscing about Jordan's Island, and Murdoch McLean speaking about the railway and the Makarau tunnel, farming and schooling in the area.

For more information phone Megan Paterson on 021 959017 or email her at: threehorses@xtra.co.nz.

■ KAUKAPAKAPA MARKET

Spinning, knitting, sewing, quilting, hand made soaps, and hand crafted jewellery will be just some of the hand crafts available at the Kaukapakapa market on Sunday, September 17 from 8.30am to 1pm. There will also be locally grown produce and plants, gifts, collectibles, and car boot sales.

Food offerings will include ice cream, candyfloss, snacks from the market café, freshly made doughnuts, coffee and the Helensville Lions sausage sizzle. Duo 'The Roselles' will perform popular songs from the 1960's onwards.

For more information or to book a stall phone Sarah on 0274 831 542 or email: sarah1@maxnet.co.nz

■ BEE KEEPING WORKSHOP

Local expert Jason Everard will hold a beginner's guide to bee keeping workshop on Saturday, September 30 from 10am to midday at Kaipara Coast Plant Centre, 1481 Kaipara Coast Highway, Kaukapakapa.

The fun and informative workshop will teach participants about the world of bees, as well as what to plant to grow a bee friendly garden. The cost is \$10 per person, payable on the day. To book your space, email: info@kaiparacoast.co.nz.

trade & classifieds

■ Helensville Glass

24 hour service.
Ph: 420 8210

Helensville News - Publication Information

■ OCTOBER 2017 deadline: Friday, 15th September 2017

ISSUE DUE OUT TUESDAY, OCTOBER 3rd 2017

Editorial Enquiries, Letters to the Editor and Advertising:

Dave Addison - Ph: 420 7215 • Mobile: 021 178 5568 • Email: dave@helensvilleneews.co.nz

Free Subscriptions to Online Edition:

Email: subscribe@helensvilleneews.co.nz

2017/2018 issue dates and deadlines:

Due out: Oct 3rd	Copy by: Sept 15th	Due out: Dec 5th	Copy by: Nov 17th
Due out: Nov 7th	Copy by: Oct 20th	Due out: Feb 6th	Copy by: Jan 19th

Editor & Publisher: Dave Addison, Helensville News Ltd, PO Box 59, Helensville 0840. **Editorial:** Dave Addison, 420 7215.

Design, Subediting & Layout: Dash Design, 420 7215. **Printing:** Rob McCorkindale, Print Matters, 0274 740 657.

Copyright: No material in this newspaper may be copied or reproduced without the publisher's permission.

Disclaimer: Every effort has been made to ensure the accuracy of information in this newspaper, but the editor and publisher accepts no responsibility for any errors or omissions.

Letters to the Editor: Should be kept to around 250 words and may be edited as space dictates.



www.facebook.com/helensvilleneews

■ www.helensvilleneews.co.nz

HELENSVILLE DRAINAGE & WASTEWATER SERVICES

- Registered Drainlayers
- 1.5 & 3.5 tonne Digger Hire
- Tip Truck Hire
- Urban & Rural Drainage
- Footings & Power Trenches
- Septic Tanks
- Innoflow Septic Installer

Phone: 420 9091 Mob: 021 657 276

Email: hlvdrainage@xtra.co.nz

86 Mill Road, Helensville



Quality auto service and
repair at country prices



WOFs - Brakes - Suspension

90 Mill Rd, Helensville
Phone 420 8177

Burnetts



MOBILE
0274 924 494

FIRST AUTO ELECTRICAL

Full Mobile Service

Specialists in Auto Electrical & Air Conditioning
Servicing Vehicles, Heavy Machinery,
Farm Equipment & Marine

Workshop ⚡ Parts ⚡ Accessories

Ph 09 420 8181

Mob 021 689 700

