

Giant earthmover has long local history

Probably the single largest exhibit to go on display at the Helensville Museum will be arriving any day.

The new exhibit is a huge 1929 McCormick Deering Bay City tractor shovel and dragline - a vintage machine with a long history in our area, and also one with an important role in a significant national event.

Now, the museum needs to raise funds to help cover the costs of both the purchase and storage.

The piece of heavy earth-moving equipment was brought here from Michigan in the United States, and operated locally and around Auckland by Bill Davidson, who nick-named it 'Rambling Kate'.

Among works the machine was used for were the approaches to the Makarau bridge, which involved camping on site and cooking on a kerosene stove, and the road over Albany hill.

It may also have been used on Tamaki Drive, and spent time up in Whitianga.

After the 1931 Hawke's Bay earthquake the government

seconded the Bay City machine to help with the clean-up work. That meant Bill, who was the only person who could operate it, had to move down to Napier for three to four years.

In 1943 Bill purchased a farm at Woodhill, and the machine was used to create many of the roads through Woodhill Forest, as well as significant drainage works at South Head.

It's history isn't without infamy, either. In

1952 the slow-moving machine, which can only do about 6km/h, got clipped by a train while crossing the tracks at Woodhill, causing the train to derail.

Bill, who was born in 1901 and only had sight in one eye, used the Bay City shovel up to the mid-1970s. It was eventually loaned to Peter MacKenzie's Iron Park museum on State Highway 16, just south of the Helensville-Parakai roundabout.

When Peter closed his museum and moved to Dargaville, he took the machine and many other pieces of equipment with him.

The earth mover was largely forgotten locally until Helensville's Thomas Grace discovered it up for auction at Dargaville in early February as part of Peter MacKenzie's estate.

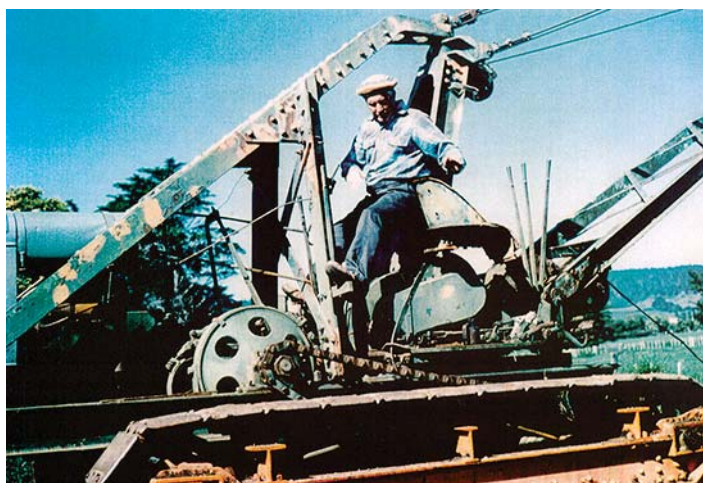
Hurried discussions followed with the Helensville & District Historical Society and Bill's daughter, Janet Downer, who lived in Helensville until 1998.

Janet agreed to put up \$10,000 of the \$24,000-plus purchase price to bring the shovel home, with Thomas and the museum each putting in smaller amounts, and Thomas agreeing to loan the balance until funds can be raised to cover the purchase.

A secure GiveALittle fundraising web page has been set up at: <https://givealittle.co.nz/cause/giving-1929-mccormick-deering-bay-city-shovel> to try to raise the roughly \$10,000 needed.

The purchase price won't be the end of fundraising, however - a shed will be needed to store the restored machine, which is still in operational condition.

"Getting it home is just a start," says Thomas.



• Bill Davidson at the controls of Rambling Kate at Woodhill

Anika Moa brings kids' show to town

Leading New Zealand musician Anika Moa brings her children's show 'Chop Chop Hiyaal!' to Helensville this month.

The 45-minute show will be held in the Helensville War Memorial Hall starting 11am on Saturday, March 10, as part of the 2018 Auckland Arts Festival.

The show, based on Anika's successful Songs for Bubbas albums, is described as a terrifically cheeky, wonderfully naughty and magical world where witches and taniwha gobble you up and rats are naughty ninjas.

Anika and a special witchy friend will take

children on a rollercoaster ride of terrific stories, terrible taniwha and good old fashioned singalongs.

"My aim is to make my kids' shows engaging and educational. Kids learn basic Te Reo, the colours and how to count; it makes them feel proud," says Anika.

Tickets for the Helensville show cost \$10 general admission, or \$28 for a family pass. They can be booked online at: www.aaf.co.nz. Door sales on the day will only be available if the show isn't sold out beforehand.

PREMIER

One stop - we do the lot!

- COLLISION REPAIR
- MECHANICAL REPAIR
- TYRES

Call today for an appointment or FREE quote!

PH 09 420 8806

www.tyrepower.co.nz

 Tyrepower

 mfa



www.facebook.com/helensvillenews



[@HelensvilleNews](https://twitter.com/HelensvilleNews)

www.helensvillenews.co.nz

BUYING OR SELLING PROPERTY?



Jana Mills

Mob: 021 509 990
AH: 09 420 9953

PRESTIGE
REAL ESTATE

f Jana Mills Real Estate

editorial

The past few weeks haven't been the greatest for our town.

Firstly we had the cancellation of our largest annual event, the Helensville A&P Show, due to the grounds not recovering from weeks of rain. While show day itself was perfect weather-wise, I saw the grounds myself just a couple of days beforehand and can confirm it would have been a mistake to try to hold the event.

Then I learned of the impending closures of two of our top retailers, Allsorts and The Pawa Room. They have been fixtures in our town for 20-plus and 17 years respectively, and will leave a huge hole in local main street retailing - although at least Allsorts will continue trading in a reduced form at a new location. The good news is, neither closed because of a lack of business, so there is life in local retailing yet.

The fewer good local shops we have, the more our residents will go elsewhere to shop, and that will make it less attractive for new businesses to open up here.

- Dave Addison, Editor

letters

Local Board member Phelan Pirrie regularly rolls up at our Residents' Association meetings, and we are always grateful for his input. He knows full well that his views and mine diverge considerably, never-the-less I respect his commitment to people in general and Rodney in particular.

However, when it comes to targeted rates I think he must have been listening to very different focus groups. The idea there was "tentative support" for proposed targeted rates (for local transport) was certainly not the view of the majority I have spoken to.

Targeted rates are simply the thin end of the wedge, and a tacit admission that the budget has been seriously fouled up. There is no earthly reason why anyone, except in very exceptional circumstances, of which I can bring none to mind, should be expected to pay even more for the services for which rates are raised in the first place.

Rates exist for the infrastructure of the community as a whole - water, sewerage, and transport. In fact, Auckland does extremely well out of us as we pay handsomely, and in most rural cases have none of those basic amenities. Whether or not targeted rates are subjected to legal strictures, we'd like to get a fair share of the pie in the first place. Value for money has nothing to do with it - a Park'n'Ride in Kumeu would seem like a transport priority judging by the popularity of the glacially paced and already inadequate equivalents at Silverdale and Albany.

- Crispin Caldicott

Here is a reply from Phelan Pirrie: During Local Board Plan consultation, 52 percent of the 1600 people who provided feedback wanted more information about what a targeted rate for Rodney transport infrastructure could do. Based on that feedback the Board has prepared some options for people to consider in March.

Residents have a choice - they can pay now to bring investment forward by a decade or two, or they can wait. I personally can see both sides of the argument and have no firm view either way. I look forward to people's feedback, and hope this motivates residents to have a discussion about how our area develops over the next 10 years.

As far as "paying handsomely" for current services, it's worth noting that the Local Government Commission determined that rates in Rodney would have to increase by 48 percent if it were to split away from Auckland Council. The conclusion could be that we are being subsidised by the rest of Auckland, so in fact do pretty well for a large, sparsely population ward. No doubt this debate will rage on for many years to come!"

Parakai Springs
swim school



ALL AGES

Parakai Springs 09 420 8998
swimschool@parakaisprings.co.nz

N2K *Koast to Koast*
Electrical Ltd



TOSHIBA

Your local Toshiba Heat Pump Installer

Ph: 420 2028 Mob: 021 417 992
koast.electrical@stratanet.co.nz

For all domestic and commercial electrical work

4 FOUR SQUARE
PARAKAI

GRAB A REGULAR COFFEE AND A MUFFIN BEFORE 11AM FOR JUST \$5




4 MENU

Burgers Menu (After 5:30pm Wed-Sun)

#1 Quarter Pounder (Hamburger)	\$5.99
#2 Quarter Pounder with Cheese	\$6.99
#3 BBQ Bacon Burger	\$7.99
#4 Double Beef and Cheese	\$9.99
#5 Chicken Tender Aioli	\$7.99
#6 Pulled Port with Salad or Slaw	\$9.99
Add Regular Chips with burger for	\$1.99
Add Large Chips with burger for	\$2.99
Add Pepsi or M-Dew can for	99c

Fibre coming to Helensville, Parakai

Work will start this month on installing fibre optic cable for ultra-fast broadband (UFB) in the Helensville and Parakai area.

Once the rollout is complete, all premises within the area shown shaded on the map below will be able to get fibre connections.

The fibre cables will be run under berms and footpaths. There could also be some aerial deployment using existing power poles.

"We try our best to keep the disruption to a minimum, but when we are building a completely new network there will always be some disruption," says Nathan Beaumont, media and PR manager for Chorus.

"We'll be doing a letter drop to residents before we start work to alert them to the fact we'll be in the area and [to] outline what work will take place.

"We'll also likely do another letter drop to

inform residents when they can connect to the fibre network."

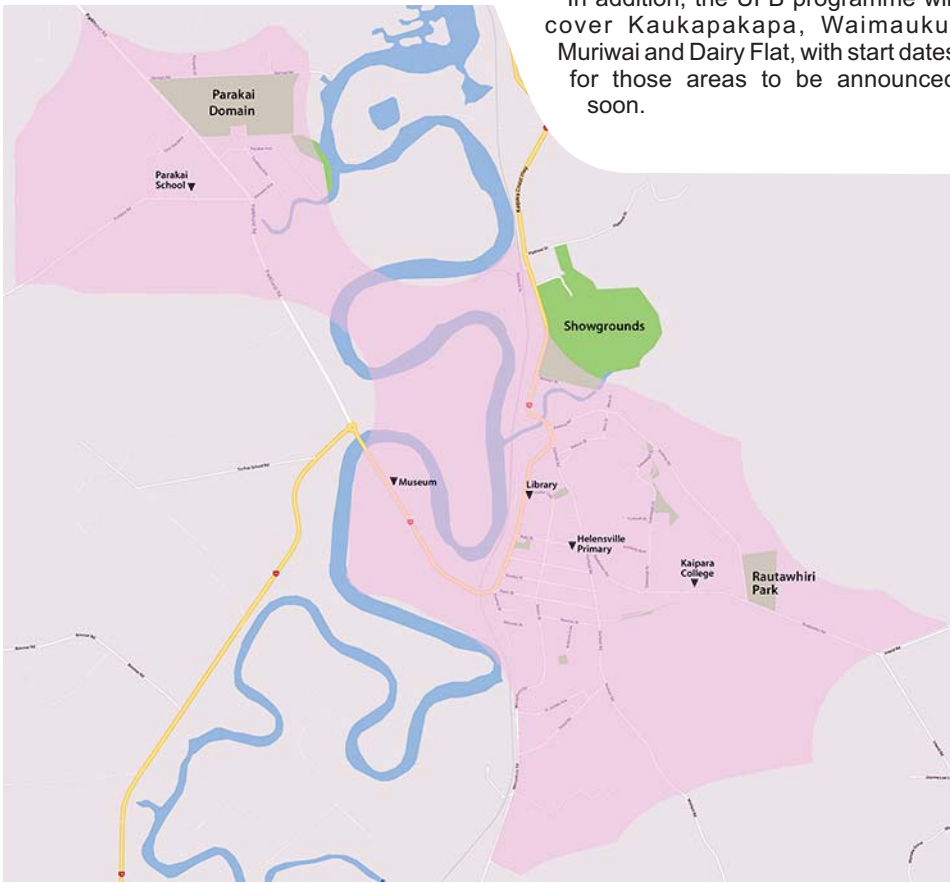
The work is due to be finished by February 2019, but some areas will be able to connect much sooner than that.

"There's certainly a huge demand for better broadband, so the UFB programme will be very welcome in Helensville," says Nathan.

New Zealand households use about 184GB of data per month on average, a huge increase on the 13GB used just five or six years ago.

"The evolution of new data-hungry devices and applications, such as 4K televisions and virtual reality, will continue to fuel the demand for bandwidth," says Nathan. "We're forecasting average monthly data usage of 680GB per household by 2020."

In addition, the UFB programme will cover Kaukapakapa, Waimauku, Muriwai and Dairy Flat, with start dates for those areas to be announced soon.



ALLSORTS
Says
'Thank You'
New space, new hours.
Same friendly face!
Come see me ...
6 McLeod Street Phone 420 8664

WATER Wagon 1
Graeme Waterson

Like us on facebook
0800 KKK H2O 09 420 4688
027 280 2630
'Pure Spring Water Carriers'

RDi
Rodney District Insurance
Locally owned and operated
Insurance Broker
♦ Home and Business
♦ Vehicles ♦ Marine
Ph: 420 2788
Mob: 022 363 2377
Email: m.kreling@rdi.nz
www.rdi.nz



CRAIGWEIL HOUSE

Care, Comfort and Companionship

Situated in Parakai village, opposite the thermal pools, Craigweil House offers a warm and caring environment. Our family owned, and operated home, offers a relaxing, friendly and safe environment which is nurtured by our dedicated care team. We offer many levels of care including Rest Home, Hospital, Secure Dementia, Respite and Day Stays.

Come in for a friendly cuppa and chat with our team today!

143 Parkhurst Rd, Parakai • Phone: (09) 420-8277
Email: info@craigweil.co.nz

Previously
United Travel



From flights, package holidays, tours, and cruises. Let us help you discover the world.

Embrace life. Call us today.

YOU Travel Helensville

60 Commercial Road, Helensville
(09) 420 8860
karen.reilly@youtravel.co.nz
www.youtravel.co.nz



- For all your electrical requirements
- Repairs, maintenance & new installations
- Overhead to underground conversions
- Underground services to new homes
- New alarm systems

0274 784 396

Ph/Fax (09) 420 5122, (09) 420 8978
email: seangrayelectrical@xtra.co.nz

Gumboots
Early Learning Centre

www.gumboots.ac.nz
1157 Peak Road R D 2 Helensville, ph 411 9038

Allsorts of changes coming

One of the longest running retail stores in Helensville closed its doors on March 3 - but it's not the end of the road for the business.

Allsorts has been a fixture on Commercial Road since before *Helensville News* started in 1999 - the business has advertised in every single issue of the paper since our first edition.

Now the lease has ended, and owner Jenny Coles is going to run the business

will continue to stock the New Zealand made Wild Ferns skin care range, and the Matakana Botanicals range.

She appreciates the new location won't be as easy for some people to get to, and says she is considering a delivery service for some items. Gift wrapping, gift vouchers and layby will still be available.

Jenny says working from home "will be very different for me".



• Jenny outside Allsorts

She has become friends with many of her customers, some of whom have been with her the whole 14 years. She's seen little babies, in nappies when they were first brought into the shop, grow into teenagers - and remembers many older customers who are no longer alive.

"It's been an amazing experience which I have loved,"

from her home in McLeod Street.

As we went to print she was still pondering a new name - Jen's Garage Outlet was one possibility - and looking forward to having a little more free time.

Since buying Allsorts 14 years ago on April 1, 2004, Jenny has worked seven days a week, and hasn't had a holiday for the last six years.

But the self-described "workaholic" will have shorter hours in her new location, opening 10am to 4pm Tuesdays to Fridays, and 10am to 3pm on Saturdays.

The two days a week off "will be a nice change" she says, allowing her more time to spend with her children and enjoy her five grandsons, who range in age from just three months up to seven years.

The new store will have a smaller range than Allsorts. Jenny will still stock her range of wool, haberdashery, DMC threads, net curtains and accessories, plus a selected range of gift items which will include candles, baby items, and hand-made cards. And she

says Jenny of her years at Allsorts. "I want to thank all my loyal customers, and want everyone to know I appreciate their friendship," she says.

With no plans for retirement in sight, Jenny is looking forward to continuing to serve the Helensville community.

Jordan Luck concert

The Jordan Luck Band will headline a free, three-hour concert at the Helensville River Reserve in Mill Road, on Sunday, March 18.

The smoke free event, which will start at 4pm, will also feature rock group theSlacks and Ms Sandy Mill. The concert is part of Auckland Council's summer Music in Parks series.

Jordan Luck is best known as frontman and songwriter with the Exponents, his former band which clocked up 18 Top 40

• To page 7

McLEOD MOTORS

Your friendly local team

6 Railway Street, Helensville
Email: mcleodmotors@outlook.co.nz
Ph: 420 8633



Find us on Facebook

- WOFs
- All Mechanical Repairs
- Auto Electrical
- Tyres & Batteries
- Stockists of 'Total' lubricants

A&P Show cancelled

They say the show must go on - but this day, it didn't.

After weeks of rain waterlogged our local showgrounds, and with a cyclone potentially due to hit just days before the annual Helensville A&P Show, organisers were forced to cancel this year's event.

Helensville's biggest one-day event had only been cancelled four times before in its 116-year history, and the last time was 70 years ago.

A&P Association president Rick Croft says the grounds were so sodden that there was no safe access or parking available for either the public or competitors - ruling out even a scaled-back version of the show.

Even if the weather had remained fine right up to show day, the grounds wouldn't have dried out enough to make them useable. While the cyclone didn't hit Auckland, regular rain



• Show president Rick Croft gets his boots muddy

leading up to show day kept the grounds saturated.

"We understand the disappointment this will cause our community who support the show every year," says Rick.

"We look forward to putting on a sunny,

spectacular show next year."

The show has received numerous messages of support via social media.

Of the previous cancellations, the first was in 1939 because of a polio epidemic which was sweeping the country. The show was also abandoned twice during World War Two, and again in 1948 due to a national infantile paralysis epidemic.

The only previous weather-related 'cancellation' was in 1971, for similar reasons to this year's, with the grounds unusable because of rain. But it was really more of a postponement; up to 1971 the show had been held in December, so the decision was made to move it to its present February date. So although a show wasn't held in 1971, it did go ahead only a few weeks later in early 1972.

Like many farms in the district, the showgrounds had never fully recovered from the extremely wet winter last year. Show volunteers spent days harrowing and rolling the grounds in preparation for this year's show, and if the weather had played its part the show could have gone ahead.

But with Auckland receiving almost three times its normal January-February rainfall, in just the first six weeks of the year, the show's fate was sealed.

Gibbs Farm visit

Locals wanting to see the giant sculptures at Gibbs Farm will have the chance on Thursday, April 12 when the Helensville A&P Association has a fundraising visit there.

Money raised from the day will go towards the 2019 Helensville A&P Show.

Gibbs Farm contains a series of large-scale, important artworks commissioned from some of the world's leading contemporary artists.

A reasonable level of fitness is necessary, and sensible walking shoes should be worn.

The visit will take place from 10am to 2pm. Tickets are limited and must be pre-booked. They cost \$25 for A&P Association members and senior citizens, or \$30 for non-members. To book, email: info@helensvilleshowgrounds.co.nz, or phone: 420 7572. Payment is required by April 5.

Those attending should be at the farm's Barr Road entrance by 10am.

Carrfields

Livestock

JASYN YEARBURY

Your livestock representative
living locally

- ▲ Sale facilities across NZ
- ▲ Forward contracts
- ▲ On-farm clearing sales
- ▲ Dairy service bull plans
- ▲ Live export
- ▲ Livestock valuations
- ▲ Dairy herd marketing & sales
- ▲ Prime stock drafting & marketing

Contact Jasyn:

M: 027 655 6551

H: 420 8857

E: jasyn.yearbury@carrfields.co.nz



KUMEU PLUMBING LTD

Established 1974

-  plumbing
-  roofing
-  solar heating
-  pump shop
-  pool & spa
-  filtration
-  drainage
-  woodfires
wetbacks/radiators

Ph 420 9108

156 Main Road, Kumeu info@kpl.co.nz www.kpl.co.nz

1st-25th March, 2018

THE Super
STATIONERY
SALE

paperplus

Select

TICKLE YOUR IMAGINATION

64 Commercial Road, Helensville P: 09 420 8646
E: helensville@paperpluselect.co.nz www.paperplus.co.nz

CLOSING DOWN SALE

on now - last day March 31st!

Gifts • Fashion • Jewellery • Babywear + more



Up to
70% OFF
storewide

Ph 420 9898

Sellars & Co | Lawyers Helensville Law Office

For all your legal services including:

- Wills & Trusts
- Estate Administration
- Property Relationship Matters
- Refinancing
- Commercial Matters
- Land Subdivision
- Residential, Rural & Commercial Conveyancing



69 Mill Road, Helensville

Ph: 09 420 9324

Email: admin@helensvillelaw.co.nz

ACCOUNTANT

UHY Haines Norton
Chartered Accountants

- Farm & Lifestyle Block Specialist
- Business Planning & Development
- Financial Analysis

OFFICE

MARK FOSTER

420 7972 021 220 5817

Office hours 9am - 5pm
34 Commercial Rd, Helensville
PO Box 17 Helensville



We specialise in Sports Injuries

This year we are proudly sponsoring:

- Kaipara College students
- Kaipara Junior Touch

ACC claims \$15 per treatment for the above

Late nights:

Monday 7pm, Tuesday & Thursday 8pm

Ph 420 8899

10 Commercial Rd, Helensville. www.physioflex.co.nz

Paua Room making way for yoga

Often when a shop closes down these days, it's just a sign of the tough retail times.

But not so for Helensville's Paua Room, which will shut its doors on Saturday, March 31 after 17 years as one of the town's leading retail outlets.

Shop owner Linsey Smith is closing the business she has run in three locations around town over the years so she can focus on her true passion - yoga.

She has been teaching yoga locally the whole time she has owned the Paua Room, and now wants to devote all her time to that.

The Paua Room premises will be converted into additional space for her Arohanui Yoga lessons, workshops and retreats, once she's had time to properly evolve her plans.

Linsey is also planning to start offering lessons online later this year for those who are unable to make it to her physical classes. They will likely be mostly pre-recorded lessons, with occasional real-time, live classes.

This year she has been studying Te Reo Level 4, as well as traditional Māori miri miri healing massage, which is something she says she may offer in future.

Coastguard boat

Helensville's Kaipara Coast Guard now has some more help in its role as safety guardian of the Kaipara Harbour.

Manaia Rescue, a 6.8m rigid-hulled inflatable rescue vessel formerly in use with Coastguard Whangarei, is now being utilised on a permanent basis by Coastguard North Kaipara, which is based at Tinopai.

It's the first time the northern unit has had a dedicated rescue boat.

Linsey initially set up The Paua Room in the front of the old Regent Theatre building in 2001. The following year she moved to 90 Commercial Road, where the St John Op Shop is now, and then in 2008 to the much larger former Kiwi Connection building at 6 Commercial Road.



• Linsey inside The Paua Room

She cites a number of highlights over the years, not least receiving a Highly Commended award in last year's North West Business Awards.

Supporting New Zealand made brands and artists, and being able to give back to local schools and the community have been very important to her. And being part of 'Team Paua' which raised more than \$10,000 in May 2009 by taking part in the Shave for a Cure fundraiser for the Leukaemia & Blood Foundation is something Linsey is very proud of.

Linsey says she has made friends with many customers, and has received "awesome feedback" from locals about the shop over the years.

For the whole of March she is holding a closing down sale, offering savings of up to 70 percent.

"I want to thank all my customers for supporting the shop and coming here when they needed clothing or gifts that were a little unique and special."

Helping New Zealanders to do more

MTF Finance Silverdale offers personal and business lending. Contact us to learn more.

☎ 09 421 0335 or
022 FINANCE

📍 2 Milner Avenue

mtf.co.nz/silverdale



Terms, conditions and lending criteria apply.



PEST CONTROL: Home or Business

WATER FILTRATION: Installations, Replacements & Repairs

HOME VENTILATION SYSTEMS: Suitable filter replacements

HEAT PUMP CLEANING: Heat pumps should be cleaned yearly

CHIMNEY & FLUE CLEANING: Professional clean & no mess

WATER TANKS: Cleaning & Repairs

09 421 0463

www.selecthomeservices.co.nz

Dispensary to open at med centre

A dispensary for medical prescriptions, run by the local Unichem Helensville pharmacy, should be in operation at Kaipara Medical Centre before winter.

Work to reconfigure the medical centre's reception and waiting areas will begin this month, and that work will include setting up the small dispensary.

The contract to run the dispensary was put out to tender with the local pharmacy becoming the successful partner.

Unichem Helensville's managing director Stephen Yoo says the partnership will provide better health outcomes for the local community.

"People often go to see their doctor for issues that a pharmacist could help with, and by being on site we'll now be able to ease some of that pressure on doctors," he says.

Having a dispensary on site is part of a growing trend in healthcare, says Kaipara Medical Centre business manager Richard Reid.

"Not only will it mean both doctors and pharmacists have a better understanding of what medications are being prescribed, but

Jordan Luck concert (cont...)

• From page 4

singles. One of those, 'Victoria', was recently voted the eighth greatest New Zealand song of all time, while his iconic song 'Why Does Love Do This to Me?' has become a test rugby fixture.

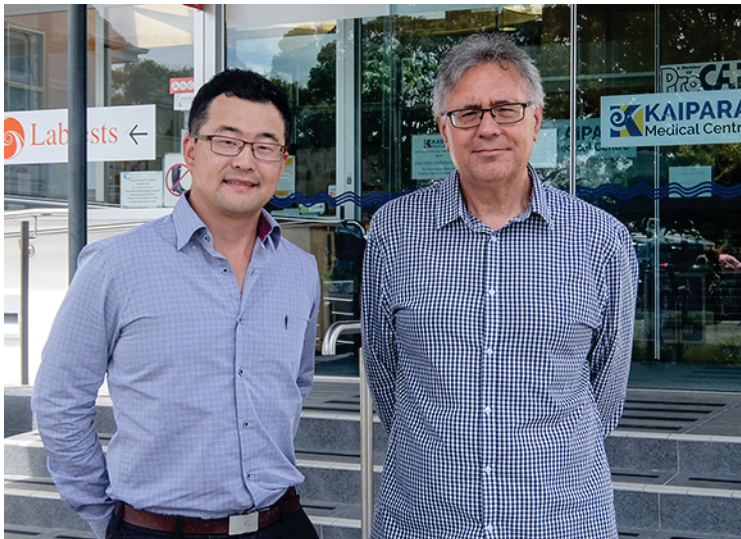
Jordan's accolades include Inaugural Inductee into the New Zealand Rock n Roll Hall Of Fame and The New Zealand Music Legacy Award 2015.

it'll be much more convenient for patients, especially those who find it difficult to make a second trip to have their prescriptions filled."

As part of the arrangement, Unichem is making a financial contribution to both the refit and the costs of the upgrade of the premises.

"We are delighted with Kaipara Medical Centre's decision in allowing us to be the main pharmacy provider serving the people of Helensville," says Stephen.

One of his staff is already in training to become a prescribing pharmacist. The



• Stephen Yoo (left) and Richard Reid outside the medical centre

dispensary won't offer any retail products.

Stephen has owned Helensville Unichem for 10 years, and says: "We've realised how much our customers have invested in us, and I'm happy to assure them this will not jeopardise the operation we have running on the main road, which will be business as usual."

Richard says it's hoped the reconfiguration, which is designed to better utilise available space, will be finished before the busy winter season.

"It will be a little disruptive for a time, and we do ask for our staff and clients' patience while the alterations are made. We're confident it'll be a really positive change for our patients and community," he says.

HELENSVILLE BOWLING CLUB

38 Awaroa Road, Helensville

● 2017-2018 season has opened

● New players and social members welcome.

● Petanque played, all welcome.
Contact Ian Baker Ph 027 448 9509

For more information Ph 09 420 8316
or email: helensvillebowls@gmail.com

'Bowls is not just for Oldies'



KAIPARA CONTRACTORS LTD

YOUR LOCAL BUILDER



STUART HUME
Experienced & professional
Full range of building services

Ph: 420 5782 Mobile: 027 275 2115
kaiparacontractors@gmail.com

FORGE FITNESS

24HR GYM

"Train when you want to"
at your local gym

79 Mill Road

Ph 420 6303

Follow us on Facebook

facebook.com/Forge-Fitness-247-Helensville

53-65 Commercial Rd, Helensville. Phone: 420-8400 Fax: 420 7523 www.kaiparamedicalcentre.co.nz



PROUD TO BE OWNED BY OUR COMMUNITY

Our Vision: To make the South Kaipara District the healthiest rural community in New Zealand

Dr Phillip Barter | Dr Aimee England | Dr Dean Foster | Dr Hollie Shine | Dr Trinh Wright | Matthew Woollett

We are a **Very Low Cost Access** practice. Adult fees for registered and funded patients, for a standard 15 minute daytime appointment, are just \$18.00. Under 13s are free, and ages 13 to 17 years are just \$12.00.

Monday, Tuesday, Wednesday & Friday: 8:30am - 7:30pm. Thursday: 8:30am - 5pm. Saturday: 8:30 to 12 noon (urgent & emergencies only).

For after hours, urgent medical attention, please phone the practice number above. Your call will be answered by our triage nurse, who will contact the duty doctor. FOR SERIOUS EMERGENCIES CALL THE AMBULANCE 111.

PILATES

Mat Classes

Nurturing & restorative movement for mobility & freedom.

Co-ordination & balance of muscles for stability, strength and flexibility

Starts next Term
Linda 027 690 9000

First class complementary



APPROVED WASTEWATER LTD

Wastewater design
Tank supply, installation, servicing
Drainlaying

Phone: 420 9042

69H Mill Rd, Helensville
info@approvedwastewater.co.nz
www.approvedwastewater.co.nz

Patsy - 40 years with St John

Helensville's Patsy Carlyle celebrated 40 years' service with St John Ambulance last month.

It's a career that's had a huge number of highlights - as her packed scrapbooks detailing her years with the organisation attest.

Patsy was working as a paediatric surgical nurse in 1978 when a St John training officer told her she would be really good in ambulances.

She started that year as a volunteer, a role she held for seven years.

"In those days we didn't have women front-line; there were no female officers full-time in Auckland, so we used to be the second part of the crew. The majority of the ambulances were single-crewed," remembers Patsy. "We would be in the back with the patient [as] we weren't allowed to drive."

In 1985 Patsy gained full-time employment, only the sixth woman to be employed as a front-line ambulance officer in Auckland.

She was posted to Waiheke Island first, followed by stints at

Warkworth, Silverdale, Wellsford, Pukekohe and Waiuku.

"I was quite unique in the late 80s because it was a rarity [being a female officer]. The first time I worked with another female officer the senior manager at the time followed us to jobs. Now we fast forward 33 years and roughly 62 percent of staff are females."

In 1986 Patsy started working in Helensville, and three years



• From left: Waitemata territory manager Mike McAulay, volunteer Emily Chan, Patsy, and paramedic Ross Dinley at the Helensville St John station

later moved here with husband Scott Osmond to a 22-acre block at Haranui, where she could look after her horse June. The couple now live in Rautawhiri Road in a 1903 villa.

Appointed here permanently in 1992, she was the first female to be appointed to a rural station in Auckland. She says it caused a lot of discussion at the time, with people thinking she wouldn't be able to do the job, and her safety was brought up. But she says: "I've never felt unsafe in a rural area."

When she first started in Helensville, St John was conducting a review, and due to the lack of work they were looking at closing both Helensville and Waiuku stations. Patsy got permission to talk to the media - "a big concept at the time" - and within 18 months had doubled the workload here by raising the profile of the ambulance service, and educating people about when they should use an ambulance.

Patsy left work in Helensville in 2001 and spent three months in upstate New York working with special needs people. She has since spent another four summers working there, which she says has been invaluable in her work as a paramedic.

Back in New Zealand she landed the job of ambulance team manager for Rodney District.

While working in Helensville she attended a number of accidents involving animals, so she studied veterinary nursing at Unitech for two years, specialising in general animal science.

Patsy is now based at Mt Wellington as shift supervisor for the Counties-Manukau area. She is still on the road, and still pulling night shifts, which she has been doing since the age of 17.

And she still works in Helensville on a relief basis - when *Helensville News* spoke with her, she had already worked here three times this year.

Among her more unusual jobs was driving an ambulance in February's Pride Parade.

"It's wonderful seeing St John embracing diversity. It's nice to be part of an organisation that moves with the times."

She has been involved with road safety campaigns, and worked as an exchange officer in Australia where she was given the call sign 'Kiwi 1'.

In 1999 St John made her a Member of its Order of Merit, and in 2010 she became an Officer of the Order of Merit.

Patsy owns an incredible collection of Barbie dolls - more than 1300 in their original unopened boxes, plus more unboxed ones. She held a display of those in the Helensville hall, raising around \$2000 for the refurbishment of the local ambulance station.

Now, she wants to hold another exhibition to raise funds for one of the fitness stations on the new Rautawhiri Park fitness trail - a project Scott is overseeing for the Lions Club.



18-PI-C-2274-HN-1

AUCKLAND'S FUTURE IS IN YOUR HANDS

We have some big decisions to make that will affect Auckland, and we need your help to make them. From transport to the environment and the priorities in your local area, now is the time to have your say.

It's easy to find out more and give your feedback online, or attend a local event.

HAVE YOUR SAY EVENTS: JOIN A CONVERSATION WITH ELECTED MEMBERS

Wednesday 7 March 6-8.30pm, Helensville War Memorial Hall, 2 Porter Crescent, Helensville.

Have your say by 8pm, 28 March.

akhaveyoursay.nz



Life. It's amazing how the one life event we all face is usually the least planned for and takes most of us by surprise.

Take the time to plan ahead so you and your family can have confidence in the future. Whatever it might hold.

Simple Cremation

No-Service
Cremation From...

\$1,725

When you want a straightforward, no fuss option.

Committal

Burial or Cremation
From...

\$3,699

The committal allows for your family and friends to attend a private farewell either at the crematorium or cemetery.

Simple Service

Chapel Service and Burial
or Cremation From...

\$5,199

This service allows for a traditional funeral service at a chapel or other venue.

Service & Reception

Chapel Service and
Reception, Burial or
Cremation From...

\$7,399

This is a traditional funeral service, catered for up to 100 people at a chapel or other venue.

T's & C's Apply

Hibiscus
FUNERAL SERVICES

0800 420 470

www.hibiscusfunerals.co.nz



Opportunity Shop

Stock constantly changes - come in to find a bargain & help support St John in YOUR community

90 Commercial Rd
Helensville

Ph: 420 9272

Open
Monday to Saturday



EDC

ENGINEERING DESIGN
CONSULTANTS

Sub-division Specialist

Contact us on 09 451 9044 or team@edc.co.nz
www.edc.co.nz

Building Platforms • Utility Trenches •
Ponds • Drainage • Drilling •
Aggregate Supply • Tip Trucks •
Excavators • Bobcat with Attachments



DRIVEWAY REPAIRS & RE-SURFACING

Call us for a FREE quote
0800 4SWALE **SWALE**
EARTHMOVERS
or 09 420 8352. 103 Mill Road Helensville



Critical Refrigeration
Services Limited

- Commercial refrigeration specialist
- Dairy refrigeration
- Cool/freezer rooms
- Chilled glycol / water reticulation
- Custom designs
- Install / Repair / Maintain

Ryan: 021 338 678

ryan@criticalrefrigeration.com

New owners & manager for Craigweil House

Changes are in the offing for Craigweil House in Parakai say the new owners.

"We've got big plans for this place," says Karen Henricksen, managing director of Henrickwest Management, which purchased the rest home last September.

"We'd like to enhance the dementia area, outside and inside, to make it better for the residents. [And] there are always renovations and upgrades to do.

"Our passion is aged care, that's why we purchased Parakai. We feel it's a wonderful little place that just needs an injection of some love.

"The changes will be done in little steps. It's a bit like putting a jigsaw puzzle together.

We're getting the picture now," she says.

Upgrading the current 12-seater van and setting up an online presence are also planned.

Henrickwest has been in the aged residential care industry for 18 years and owns two other rest homes, the Beachfront Resthome in Stanmore Bay and Catherine

Lodge Retirement Home in Royal Oak. They are both smaller than Craigweil, which is licensed for 68 residents, and fit in with the company's philosophy of providing more boutique-style aged accommodation.

Craigweil is special in that it provides continued care, with residents able to move into the on-site hospital or dementia wings if the need arises, without having to move to another facility.

Henrickwest is a family company, with

sons William the general manager and Beau in charge of business development.

"It's quite unique because we're a family group," says William. "We're quite hands-on. We take that [family] approach, and try to create that culture in the team."

New manager Alys Noyes, who started earlier this year, has extensive experience in nursing, and has tutored in a hospital-based programme. She has had several years' experience in natural health, and more recently in the care of the elderly.

Says Alys: "the other thing we are aiming for is to have a seamless interaction with the community. That's one of our focusses at the moment."



• New manager Alys Noyes (second from left) with family owners, from left: William, Beau and Karen Henricksen

They are looking to link in more with local community groups and clubs.

"We want to give back to the community because we feel we're such a part of it," says Karen. "It's something that's been lacking over the past four or five years. Our other homes are very much community minded. That's what little villages are about really."

Craigweil, which has around 50 staff, many of them locals, recently employed a second activities officer to help with exercises, games and other forms of stimulation.

"We feel that's one of the most important aspects of care," says Karen. "You can look after the physical side – anyone can – but it's the mental and spiritual side that's often lacking for stimulation."

Karen says at their other homes they do a lot of short stays, carer respite support, and day stays, and those are options they may introduce at Craigweil.

There is also the possibility for Craigweil residents to spend a couple of days at the Beachfront property in Stanmore Bay, a little 'holiday' where they would receive the same level of care as at Parakai.

"We took a busload [of Craigweil residents] to our beachfront rest home the other day they had a picnic on the beach and played inter-facility games," says Karen. "They all enjoyed that."

Need a local Electrician...

Give Ryan Branchley a call
on 027 420 6545

Residential, Commercial and Industrial
www.kinetic-electric.co.nz



KineticElectrical
smarter

Health Trust manager

A passion for raising healthy, happy families is what has driven Nicola Keen-Biggelaar's career, and it is in part the health and happiness of her own family which has brought her to her new role at Helensville District Health Trust.

For the last 12 years Nicola has commuted to the city for her role managing community investment for the Skycity Entertainment Group.

But at the end of February she joined the Helensville District Health Trust as its new business manager.

"This is a dream role," says Nicola, "because it not only allows me to bring my depth of knowledge of the not-for-profit sector and passion for community development to Helensville, but I'll also get to spend more valuable time with my own young family."

She began her first day on the job being welcomed with a powhiri at Te Whare Oranga ō Parakai, supported by representatives from a variety of South Kaipara organisations and Ngā Maunga Whakahii.

Helping Te Whare Oranga ō Parakai fulfill its vision as a place of wellbeing for the people of South Kaipara is just one of Nicola's new responsibilities. She will also play a key role in the management of the Health Trust's facilities and services as well as any future development plans.



• Nicola (right) with Trust chair Erica McKenzie



Helensville Birthing Centre

TE PUNA WHANAU KI TE AWAROA

Helensville Birthing Centre is your local community facility. It provides a free service for women who choose to give birth in a low-tech environment. Alternatively, women who give birth in hospital can then transfer to us for the opportunity to rest and establish breastfeeding.

You are welcome to call in and have a look around, or browse our facilities online.

53 – 65 Commercial Road, Helensville

Ph: (09) 420 8747

Email: bookings@helensvillebirthingcentre.co.nz

www.birthcentre.co.nz



Putting local health first • Te hau ora tua-tahi o awaroa

Healthy Helensville

Our vision: To be the healthiest rural community in New Zealand

Gifts that keep giving

The team at Te Whare Oranga ō Parakai want to give a special shout-out to the generous folk who have donated goods and services to the Helensville District Health Trust owned community centre.

Helensville Rotary Club have gifted two sturdy wooden picnic tables which Event Manager Amy Wood says will be invaluable, especially on busy market days.

Once a week local herb grower, Superb Herb, donates herbs to the Te Whare kitchen team who use it in their cooking for the Kaipara College Tuck Shop and other catering.

Amy says special thanks also goes to Kevin Anderson who volunteers to mow the lawns.

"It's wonderful when we receive something so generously and are then able to pass that on to others by making their experience of Te Whare even better," says Amy.

Rotary Treasurer, Jo May says this is the sort of community spirited project the club is passionate about and with the picnic tables now in place, Rotary is focussed on its next project – creating a community orchard at Parakai School.



Jo May, Rotary; Amy Wood, HDHT Event Manager and Angela Gilbert from Rotary with the new picnic tables at Te Whare Oranga ō Parakai.

A world of food

Helensville Lions Club is another generous supporter who this year is again sponsoring Parakai School students to take part in a weekly cooking class at Te Whare Oranga ō Parakai.

Each week chef Keryn Reardon teaches students to cook dishes from a different part of the world.

Keryn Reardon says the class of eight is made up of enthusiastic students from Years 6-8 and she's talking to other local schools about also coming on board this year.

She'd love to hear from anyone keen to sponsor the classes which are "all about educating our tamariki to make good choices about food and build a positive relationship with healthy eating."



Your Health Online

Secure access to your personal health information, anytime, anywhere, from any device

You can:



- Book an appointment
- Order repeat prescriptions
- Email your healthcare team
- View your latest lab results
- View your immunisation records
- Receive recall & appointment reminders

Using our patient portal is easy - Just ask us.

Kaipara Medical Centre

53-65 Commercial Road
Helensville 0800

Phone: 09 420 8400



Annual fishing contest



• Kaipara Cruising & Sportfishing Club members head out to a event
- Photo: Jenniema Photography

The Kaipara Cruising and Sportfishing Club's annual competition will be held on Saturday, March 10.

The event has been held for more than 30 years, and this year the major prize will be a fishing trip with King Fishing Charters.

Other main prizes include Shimano rods, reels, other fishing-related items, hats and t-shirts. Many local businesses have also donated goods and services for the contest.

The weigh-in will be at 6pm, and there will be prizes for first, second and third for snapper, kahawai, gurnard, trevally, and kingfish.

At the prize giving after the competition, the Helensville Lions Club will have their barbeque in action, and the Kaipara College Waka-Ama team will be cooking.

Tickets cost \$30, and must be pre-purchased from Helensville Caltex, Helensville Mitre 10, the Kaipara Cruising and Sportfishing Club rooms in Mill Rd, and Hunting & Fishing Westgate.

'Turning the Tide' walk

A fundraising walk promoting a family violence free northwest Auckland which raised \$11,000 last year will be held again this May.

The second annual Turning the Tide Fundraising Walk will be held on Sunday, May 27, with participants walking around 17km from the Rimmer Road end of Muriwai Beach to the Muriwai Surf Club.

Funds raised this year will go towards family violence prevention and education programmes in the community. Organisers are hoping for a large turnout, and Kia Timata Ano Trust chairperson Harry Hillebrand says: "the more people who take part, the louder our collective voice is as a community prepared to make a stand and declare we will not tolerate family violence in our neighbourhood."

Registrations are available online now at <https://turningthetidewalk.eventbrite.co.nz>.

making the difference

Is there someone special who has done something that's made a difference for you, your family or our town? To nominate someone, write to: Nicky Horsbrough, Harcourts Helensville, 37 Commercial Road, Helensville 0800 or fill out the form online at: <http://nickyhorsbrough.harcourts.co.nz>. The lucky recipient will receive a \$100 voucher for a local business of their choice.

Our March recipient is Mark Dennis (right), who has chosen a \$100 voucher for use at Helensville Mitre 10.

Mark was nominated by Jane Taylor, who says: "Mark has set up a community food swap/bank outside his [Puriri Street] home. People are able to drop off excess food and take as required. He has also built a little hut for the people of Parakai to do the same on Parakai Avenue. Great community spirit!"



PROPERTY INVESTORS

YOU NEED SOPHIE.

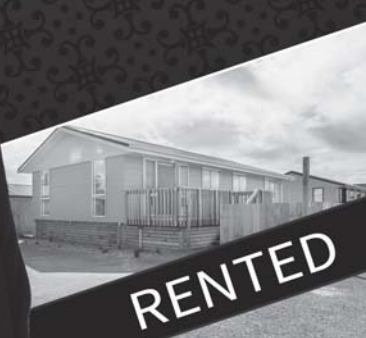


Sophie Elgar

PROPERTY MANAGER

P 09 420 7412 | M 021 113 1065

"Please feel free to contact me for advice on the current rental market."



Phone: 09 420 7412
37 Commercial Road,
Helensville 0800
Tandem Realty West Limited
Licensed Agent REAA 2008

Harcourts

Rates worry councillor

Increasing Auckland Council rates has Rodney councillor Greg Sayers concerned for local ratepayers.

He says upcoming rates increases will be almost seven percent in total - but claims none of the new taxes taken from Rodney ratepayers will be spent back in Rodney.

"Mayor Goff is planning to increase rates by 6.2 percent, and on top of that add a regional fuel tax. This will have the overall effect on our wallets of almost a seven percent increase," he says.

Greg says the rates breakdown is a general rate increase of 2.5 percent; a new 'targeted rate' to improve Auckland CBD storm water pipes of 2.8 percent; an additional targeted rate to fight Kauri die back of 0.9 percent; and a regional fuel tax costing motorists about \$125 per year, which will replace the current \$114 annual transport tax and equate to a 0.5 percent increase.



• Greg Sayers

"Council's spin doctors are working hard to convince us Mr Goff is keeping his election promise to keep rate hikes at less than 2.5%, but no one will be falling for it when they open next year's rates bill," says Greg.

He says Phil Goff's counter is that the current transport levy of \$114 per year, which equals 4.8 percent of the average rates bill, will be deducted from the planned 6.2 percent rate increase - leaving an overall rate increase of just 1.4 percent.

"This is sneaky," says Greg, "as it completely excludes the 5.3 percent impact of the regional fuel tax. So, the 'wallet test' is the 1.4 percent plus another 5.3% [which] equals 6.7 percent."

"Also, the mayor is not planning to spend any of the new taxes taken from Rodney on projects in Rodney. The impact on the Helensville district is utterly unfair," claims Greg.

"At a minimum there should be a fair balance of the regional fuel tax being spent back on projects in these areas."

"Because of the lack of public transport alternatives in Helensville, combined with fact that Rodney is not getting any of the money back, I asked [Council] for Rodney to be excluded from the regional fuel tax," he says. His proposal was rejected.

"While road sealing and maintenance, footpaths, fresh water connections and bus and/or train services remain under-funded, our near seven percent increase will be used to prop up the CBD because of the continued inner-city focus of the mayor."

Rugby season starting

Helensville Rugby & Sports Club has pre-season games against Mahurangi and Silverdale this month, with the season proper starting on Easter Saturday, March 31.

Registrations for junior rugby are open now, with registration days at the clubrooms on Wednesdays March 7 and 14 from 4pm to 5pm.

A club focus for 2018 is its Junior Coach Development Plan, which includes development sessions before and during the season, and peer support with help from North Harbour Rugby, Harbour Sport, Physio Flex and local high-level coaches.

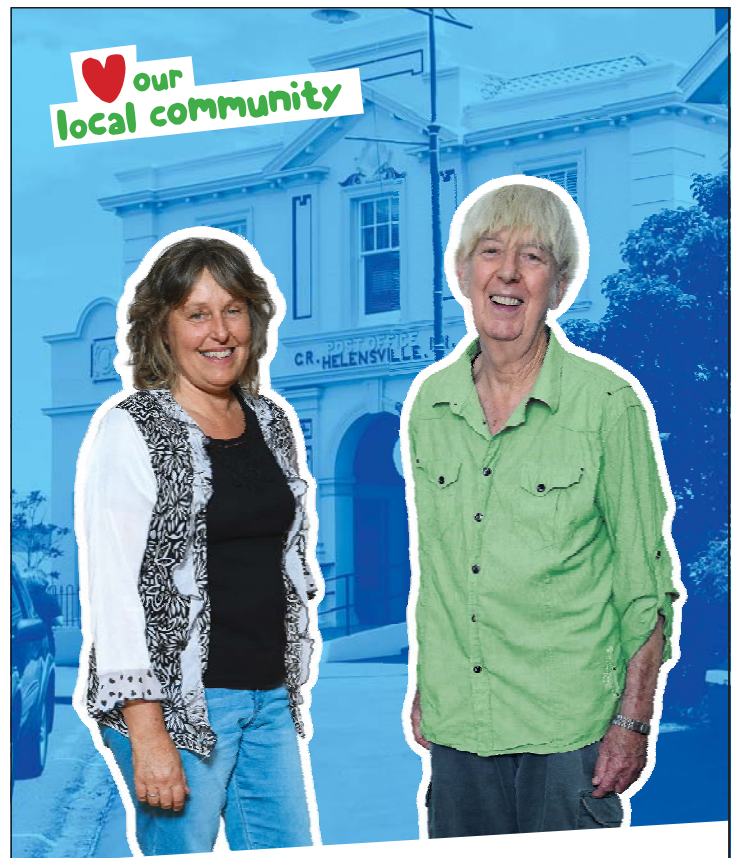
The club has also introduced a new range of apparel, with tee shirts and singlets featuring a Māori design which represents the club's values - kaitākarō (player), whānau (family), hāpori (community), and kapa (team).

The artwork for the clothing was created by club member Rei Samuel, whose father-in-law Greg Blair was behind the phoenix design of the club's crest.

Kaipara Junior Touch is being run from the club for the first time this season, with more than 600 children taking part on Friday afternoons.

Improvements to the club's facilities are continuing. There is a new defibrillator, the kitchen has been upgraded, and the bar, supported by local Liberty Brewing, is undergoing changes.

The club is also considering introducing baseball - anyone interested should phone Brooke Painter on 027 422 2639.



Speeding is the single biggest road safety issue in New Zealand today.

Within the Parakai and Helensville communities speed related crashes between 2012 and 2017 resulted in 6 deaths and 10 serious injuries*. These crashes could have been avoided by slowing down.

The faster the speed at which a pedestrian is hit, the more serious their injuries. A pedestrian hit at 30 km/ph has a 5% chance of dying, compared with a 40% risk of death at 50 km/ph. Hit at 70 km/ph, 96% of pedestrians will die.**

Being part of a community includes looking out for each other and sharing the roads. There is a huge impact on family and friends when loved ones are killed or seriously injured.

Let's tackle this speeding problem together by driving at a safe speed within the speed limits. Helensville Primary School, community organisations and local heroes have come together to help change our culture of speeding.

Love being a local - Slow Down.

* New Zealand Transport Agency, Crash Analysis System Data
** <http://www.nzta.govt.nz/resources/nz-pedestrian-profile/6.html>



BURMESTER REALTY

Licensed under the REAA 2008

Experience the Difference



Deal with the best team in town!

2.90% COMMISSION
to \$500,000, then 2% thereafter + GST

0800 18 88 80

www.burmester.co.nz

WE'VE GOT IT ALL!

- ▶ Fencing Supplies & Gates
- ▶ Landscaping & Garden Supplies
- ▶ Farm Supplies
- ▶ Timber & Roofing
- ▶ Tools & Hardware
- ▶ Insulation

Always
Great Deals
in store!

BuildLinkWest

Buy Better Build Better

1 West Street, Helensville | Ph 420-8706 | Fax 420-8476

Busy year for Makarau Hall

Makarau Hall is set for a busy year, with a range of events and refurbishments planned for 2018.

The hall opened in November 1906. Most of the land for the building was gifted, with the remainder purchased for 10 shillings. Opening night was an all-night social, with dancing that went well into the night; parents put their children to sleep on the floor behind the piano.

Among events planned for the historic building this year by the Makarau Hall Society committee are:

- A buy, sell and swap market on Sunday, March 25 from 9am to 2pm, with stalls costing \$10. The hall committee will have tea, coffee and food for sale. Email: makarauhall1906@gmail.com for bookings.
- A family pizza evening – details still being finalised.
- A health talk by Melissa Lowe of The Thrive Guide, to be held late in April
- The Makarau Hall AGM on Monday, May 7 from 8pm. A chance for members of the local community to join the committee.
- A Supper Theatre evening with the 'Mad Makarau Players' in October, date to be advised.
- A 'Meet the Neighbours' event in November, details still being finalised.

Money raised from these events will go towards hall maintenance and insurance. A number of refurbishments are planned for the hall over the coming months.

The hall is managed and looked after by the Makarau Hall Society committee. Hall membership costs \$30 per family or \$20 for singles. It is available for hire for private functions to members.

Anyone interested in hiring the hall, becoming a member, or who would like to know more about upcoming events, should email: makarauhall1906@gmail.com.

from the frontline

With Neighbours Day coming up on March 24 and 25, it made me think of the large number of civil disputes I have been involved with in the last few months - predominantly between neighbours.

Complaints range from animals and dogs escaping, fencing issues, excessive noise, irrational or intimidating behaviour, and agreements between neighbours that have turned sour.

Most of these issues are not criminal. Police will investigate incidents where there is evidence of criminal behaviour, however predominantly these are classed as civil disputes and other avenues need to be explored to try and resolve the relationship or situation.

Helensville CAB (ph 420 7162) can direct you to the right agencies, and the Community Law website (communitylaw.org.nz) can also advise you on your rights and the laws in New Zealand.

A little bit of friendliness can go a long way, and if you do ever find yourself in the situation where you don't particularly like your neighbour's behaviour, it is best to initially try to deal with the issues before they escalate to something more serious.

If that doesn't work and the relationship has deteriorated, then try not to let it worry you too much. You are never going to get on with all your neighbours.

Never react to a neighbour who is trying to bait you. Ignore petty conduct such as swearing and giving you the fingers. By making a conscious decision to ignore this type of childish behaviour it may stop. It takes two people to have an argument, so if you are ever confronted by an irate neighbour, be the better person and walk away.

I often advise people to keep a diary of interactions with as much information as possible. Jot down times, dates and a brief description of what happened. Cameras are a great tool to provide evidence that is without prejudice or bias, so can be a good investment.

Your home should be a safe place for you and your family and no one should ever feel unsafe. If you are ever threatened by a neighbour you should remove yourself from the situation and call 111 immediately.

- Mandi Bell, Community Constable



local board matters

During last year's Local Board plan consultation, we floated the idea of a local targeted rate for transport projects which residents told us were important. 52 percent of submitters wanted to see a detailed proposal.

Now we want your feedback on whether we proceed with this.

The Rodney Local Board Targeted Transport Rate would see an annual targeted rate of \$150 per rateable property (\$2.90 per week) that would be used to bring forward investment in transport infrastructure over the next 10 years.

In the Kumeu Subdivision of Rodney Ward (from Kaukapakapa to Taupaki) the \$21 million program would include: a new bus service from Riverhead to Westgate plus additional buses from Huapai to Westgate starting in 2019; a Huapai Park'n'Ride; and additional road sealing and footpaths.

Here are some of the concerns I have heard, and my responses to those:

■ *"We already pay rates, why aren't these things covered by my rates already?"*

The targeted rate is about bringing forward investment. Many of these things will happen eventually. Auckland Transport is proposing a Riverhead bus service from 2021 and there's a road sealing and footpath program, but it is not keeping pace with demand. Auckland Transport has a \$7 billion shortfall in its 30-year budget for current priorities. Even with the proposed fuel tax there is still not enough money. Accelerating investment will see projects related to our proposals brought forward in future years. This will help us keep up with growth.

■ *"Rodney already pays its fair share in rates and we don't get all our rates spent in Rodney."*

This is a common sentiment; everyone in Auckland thinks their rates are spent everywhere but their districts! Rodney Ward covers 48 percent of Auckland, with a lot of infrastructure supporting a small population of 64,000 - that's half the number of people in the Waitemata Ward, one of Auckland's smallest. Because we are growing, hundreds of millions of dollars of infrastructure is pouring into Rodney. I have been involved in work to see if our Local Board portion of rates could be separately stated on our rates notices. That work demonstrated the level of subsidisation from the rest of Auckland into Rodney - we actually get more back than we contribute.

■ *"How will I know the money will be spent in Rodney?"*

The Local Government Act requires targeted rates to be spent in the area they are collected in, for the purpose they were collected for. We had to prepare a detailed proposal of what the Local Board would do with this rate. By law this money must be spent in Rodney on transport projects, otherwise it has to be returned to ratepayers.

■ *"I don't use the bus because of where I live. Why would I support this?"*

A valid point. However as our population grows, so will traffic. Getting people onto public transport removes cars from the roads. Developing public transport is the long-term solution to getting people around Auckland.



■ *"The bus takes just as long or longer than driving, why wouldn't I just use my car?"*

As the Northwest grows, traffic congestion will worsen. While growth in Huapai and Riverhead will level off, in Redhills, Whenuapai and Hobsonville there are more than 10,000 properties being developed. That, plus improvements to SH18 to channel traffic from SH1 onto SH16, and the tunnel, will increase traffic on SH16 from Westgate. SH16 bus lanes will speed up the bus service while traffic grows.

There are pros and cons for the proposed targeted rate. I understand the difficulty faced by people on fixed incomes, and no one likes paying more tax. The Local Board has worked to find a solution to growth pressures and calls for more investment in transport infrastructure. We can wait in line with every other part of Auckland, all of which faces the same problems, or we can pay a bit more now to bring forward the investment to deal with Rodney's transport woes.

Public consultation runs from February 28 to March 28; this can be done online at 'akhaveyoursay.nz' or on Facebook at #akhaveyoursay. Paper forms will be at local libraries and service centres.

Details of the transport targeted rate will be online as part of the Local Board 10 years budget proposals, or email me and I can send you the information.

For help with council-related matters, phone me on 021 837 167 or email me at: phelan.pirrie@aucklandcouncil.govt.nz.

- Phelan Pirrie

Deputy Chair, Rodney Local Board



Come and try your friendly local motorcycle workshop. We service/repair quads, dirt and road bikes - plus we have parts and accessories.



Pickups and drop-offs available.

Ph: 4207754 or 027 474 7441
e: sevice@helensvillemotorcycles.co.nz



dizzy heights
TREE SERVICES

Dion Mayes
Qualified Arborist

All tree work • Pruning
Hedges • Council Approved
Full Insurance • Tree Felling
Tree Chipping Service

Difficult Trees a Specialty

FREE QUOTES

0800 349994
0800 DIZZYH
021 527219 / 09 4205352



Landscape Design / Construction / Maintenance
Water Features / Lighting / Irrigation
Retaining Walls / Decks / Fencing / Pergolas
Planting / Plant Supply
Concrete / Stonework / Paving

info@creatingnaturelandscapes.nz
www.creatingnaturelandscapes.nz
Call Ben 021 285 4469 / 09 947 4298

Kaukapakapa Drainage

- Septic Tank Systems
- Drainage
- Truck & Digger Hire
- Pile Drilling
- Drain Unblocking

Reasonable Rates

Over 35 Years Experience

Phone/Fax: 420 4149

Mobile: 021 926 301

Email: gary@kdrainage.nz



VISION
LANDSCAPES

**One Contractor
For All Your Needs**

Geoffrey Sawyers
0274 817 478 420 8738
Email: visionlandscapes@xtra.co.nz
www.visionlandscapes.co.nz

community tidbits from town and around

■ PONY CLUB EVENT

Helensville Pony Club will hold an all-day event at the Helensville Showgrounds on Sunday, March 11 starting at 9am.

The day will include a Derby Extravaganza, featuring a mixture of 15 to 18 70cm and 85cm show jumping and cross country jumps.

There will be a lunchtime 6-bar competition for ponies and hacks, followed by a Western Challenge obstacle course for both in-hand and lead rein riders, in two age groups.

Food and drinks will be available, and there will be prizes and ribbons for the first five place getters for each event, plus spot prizes and raffles.

■ MELANOMA MARCH

Kaukapakapa Library will be focusing on melanomas on Sunday, March 18.

There will be a melanoma quiz and information available. Dermatology nurse specialist Gill Rolfe will be on hand to talk about treatment options. There will also be a raffle, with proceeds going towards shade for the proposed Kaukapakapa children's playground. The library will be open from 10am to 1pm.

For more information phone Megan Paterson on 021 959 017 or email: threehorses@xtra.co.nz.

■ KAUKAPAKAPA MARKET

There will be free face painting for children and an Easter crafts table at the next Kaukapakapa market on Sunday, March 18 from 8.30am to 1pm.

Musical duo 'Just Friends' Mike and Lynn will be performing a selection of easy listening classics, and there will be the usual

selection of stalls selling everything from locally hand-made crafts, fresh fruit and vegetables, to used items and collectibles.

There will be freshly made coffee and food at the market cafe.

For more information or to book a stall phone Sarah on 027 483 1542 or email: sarah1@maxnet.co.nz.

■ HELENSVILLE AGLOW

Helensville Aglow will meet at 7.30pm on Friday, April 6 at the Helensville Community Church, 40 Mill Rd. The speaker will be the director of Healing Rooms NZ, Julie Calvert. All welcome. Email: yvonne@hello.net.nz for more information.

Funds needed for Xmas events

Both the Helensville Christmas Parade & Festival and the Helensville community Christmas dinner require additional funding, says organiser Holly Southernwood.

She wants to hear from locals whether there is support for funding these events from the proceeds of gambling charities - something she is against.

The Lions Club of Helensville currently provides most of the funds for both events.

Holly says options for more funding include the Lotteries Grants Board, Sky City, and Kaipara Tavern pokies (Trillian Trust).

"These have not been approached to date," says Holly. "I personally am opposed to fostering gambling, and prefer not to tap these sources."

Holly says over the last couple of years she has topped up the funding received for these events with her own money, but "that may not be sustainable long term".

"I would like community feedback as to what support there is for receiving funding from gambling proceeds," she says. Feedback can be emailed to Holly at: helchrisfest@gmail.com, or phone her on 021 488 427.

trade & classifieds

■ Helensville Glass

24 hour service. Free measure and quote.
Ph: 420 8210

Helensville News - Publication Information

■ APRIL 2018 deadline: Friday, 16th March 2017

ISSUE DUE OUT TUESDAY, APRIL 3rd 2018

Editorial Enquiries, Letters to the Editor and Advertising:

Dave Addison - Ph: 420 7215 • Mobile: 021 178 5568 • Email: dave@helensvillenews.co.nz

Free Subscriptions to Online Edition:

Email: subscribe@helensvillenews.co.nz

2018 issue dates and deadlines:

Due out: April 3rd	Copy by: Mar 16th	Due out: June 5th	Copy by: May 18th
Due out: May 1st	Copy by: April 13th	Due out: July 3rd	Copy by: June 15th

Editorial: Ph 420 7215. **Editor & Publisher:** Dave Addison, Helensville News (2011) Ltd, 502 Fordyce Rd, RD1, Helensville 0874.

Design, Subediting & Layout: Dash Design, 420 7215. **Printing:** Rob McCorkindale, Print Matters, 0274 740 657.

Copyright: No material in this newspaper may be copied or reproduced without the publisher's permission.

Disclaimer: Every effort has been made to ensure the accuracy of information in this newspaper, but the editor and publisher accepts no responsibility for any errors or omissions.

Letters to the Editor: Should be kept to around 250 words and may be edited as space dictates.



www.facebook.com/helensvillenews

www.helensvillenews.co.nz

HELENSVILLE DRAINAGE & WASTEWATER SERVICES

- Registered Drainlayers
- 1.5 & 3.5 tonne Digger Hire
- Tip Truck Hire
- Urban & Rural Drainage
- Footings & Power Trenches
- Septic Tanks
- Innoflow Septic Installer

Phone: 420 9091 Mob: 021 657 276

Email: hlvdrainage@xtra.co.nz

86 Mill Road, Helensville



Quality auto service and
repair at country prices



WOFs - Brakes - Suspension

90 Mill Rd, Helensville
Phone 420 8177

Burnetts



MOBILE
0274 924 494

FIRST AUTO ELECTRICAL

Full Mobile Service

Specialists in Auto Electrical & Air Conditioning
Servicing Vehicles, Heavy Machinery,
Farm Equipment & Marine

Workshop ⚡ Parts ⚡ Accessories

Ph 09 420 8181

Mob 021 689 700

