

## Work starts on town facelift

It's been years in the planning, but work has finally begun on a beautification facelift for Commercial Road.

The overall project has been designed to improve the street's aesthetics with trees complemented by under-planting, seating and shaded areas making a more functional space for the public; improve signage within the town centre; and to enhance the entrance to the town centre and connections with the Kaipara River.

The first stage, currently underway, involves tree planting, seating and under-planting within the main Commercial Road retail area.

Ten trees will be planted in this initial work, with rewarewa on the river side of the road, and tawāpou on the supermarket side. Low raised gardens underneath will feature a mix of native shrubs, grasses and ground covers.

The trees themselves should bring a splash of colour to the main street, with the rewarewa featuring brilliant scarlet pohutukawa-like flowers, while the tawāpou has spectacular large berries that turn from orange to purple.

The trees are different on both sides of the road as shop canopies on the river side mean a narrow species of tree, like the rewarewa, was required.

Rodney Local Board has provided \$350,000 towards this first stage of the revitalisation work, which began in February and if all goes to plan will be completed by May or June this year.

The work was originally planned for mid-last year, but was delayed because of Covid-19 lockdowns and restrictions.

Initial designs for the main street makeover were done by local landscape designer Geraldine Bayly following public consultation, and those designs were then further developed by council engineers and other specialists.

The original plan called for pohutukawa and titoki trees to be planted, but those were changed after a review by an arborist.

Stage two of the project could see a revamp of Creek Lane and foot paths, an update on the RSA memorial shelter, and additional tree planting outside the main retail area.

Rodney Local Board chair Phelan Pirrie says: "We intend to keep going and we'll be making budget available to do this [stage two] in the 21/22 financial year. [We're] not sure exactly what will be done, but we'll know when we confirm the budgets before July."

The project is now being spearheaded by Auckland Council's Kara Burn and Rodney Local Board member Vicki Kenny, who between them will work on what stage two will entail.

There is the potential to further add to the scope of stage two if additional funding



• Excavation work was an early step in the beautification project

becomes available in the future.

Plans to revitalise Helensville's main street have been debated for at least 20 years. The North West Country business association became involved in 2016 and organised some of the engagement sessions, including a well-attended public consultation meeting in September 2018 where locals could look over and comment on draft plans.

The project is part of the Rodney Local Board Plan objectives to improve town centres across Rodney, and work has also been done in Huapai, Warkworth and Wellsford.

Because Commercial Road is a state highway, the project had to be audited by NZTA. There had been concerns originally that NZTA might balk at the tree planting as they have strict tree size regulations for state highways. However Commercial Road only has a 50km/h speed limit, and that issue was resolved through negotiation.

Maintenance of the new planted area will be the responsibility of the local board.

### Inside...

- Beautiful Pasifica Festival ... Pg 3
- Bee box auction ... Pg 3
- Helensville Show in photos ... Pg 4-5
- Long-serving nurse to retire ... Pg 7
- Helen's Villa on market again ... Pg 8
- Town Talk events ... Pg 12

# PREMIER

One stop - we do the lot!

- PANEL BEATING
- MECHANICAL REPAIR
- TYRES

Call today for an appointment or FREE quote!

93 Mill Rd, Helensville, Auckland



www.premieronestop.co.nz  
www.tyrepower.co.nz

# PH 09 420 8806



www.facebook.com/helensvillenews



@HelensvilleNews

www.helensvillenews.co.nz

BUYING OR SELLING PROPERTY?



Jana Mills

Mob: 021 509 990  
AH: 09 420 9953

PRESTIGE

f Jana Mills Real Estate

# editorial

Bloody Covid! Our lovely virus which just keeps on giving almost took away our town's biggest annual event. But the Helensville Show committee bit the bullet, gambling on a move down to Level 1 the week before the show, and went ahead with setting up the event. The bet paid off, and the Show was able to go ahead without a hitch.

When you look at the months-long lockdowns in places like the United Kingdom, and the way the pandemic is ravaging most of the world, it was pretty heartening to see thousands of locals and out-of-towners flock to Helensville and enjoy a fabulous family country day in the sun without fear or restrictions. We've got some great photos from the day on pages 4 and 5.

Unfortunately lockdowns mean this issue of *Helensville News* is a little smaller than usual - hopefully we'll be back to full size next issue.

- Dave Addison, Editor

# letters

In tough times what is Auckland Council's core business?

What has frustrated me the most as a Councillor has been many repeated attempts to have Council define what its core business is in order to allow the debate to focus on trimming back on non-core Council services.

As an example, Aucklanders' rates are being used to pay for yoga classes, daycare centres, camping grounds, marinas, golf courses and a host of other services which should be being run by private enterprises.

Auckland Council cannot afford to be all things to all people right at this moment. It needs to cut its cloth to fit its revenue in what has been an unprecedented tough year. At the very least the Council needs to peel back services to prioritise the essentials that Aucklanders need and value, and to make the tough calls about what services are nice-to-haves.

When the eight legacy councils were amalgamated into the Super City 10 years ago, with the promise of requiring fewer staff and having greater efficiencies, a crucial step was overlooked which needs to be corrected.

Each of the different councils offered an array of different services, but no filter was applied to determine if all of the services were appropriate to be provided by the newly formed Auckland Council.

A cutting back to provide core services in a cost efficient-way never happened, so the staff costs of providing all the services have remained entrenched. The chance was squandered for Auckland's elected leaders to show strong enough leadership and to truly reform Auckland Council into how it should have been operating from the day of its original amalgamation.

What is required is for the Mayor's current self-sponsored internal cost saving working parties to be replaced by a 'razor squad' of competent external people who have no allegiance to Auckland Council. They should be given the authority to go through all of council's operations and cut 10 percent of unnecessary spending. This rules out elected officials, staff and any current or past consultants being part of such an exercise.

Auckland Council received \$129 million from the regional fuel tax but only spent \$89 million in the first year of collections on fixing traffic congestion - a core service. Last year it received \$148m and spent just \$79m, so what has happened to the unspent \$109 million?

Ratepayers may be shocked to learn the Council can use the unspent transport money on its own daily operational expenses, or for financing its ballooning debt.

I cannot emphasise enough the need for residents and ratepayers to submit, until March 22, on the Mayor's proposed five percent rates rise about what core services you believe need to be supported by the spending of your rates in the Helensville, Parakai and wider district.

- Greg Sayers, Auckland Councillor, Rodney Ward

**River Valley Builders**

\* RENOVATIONS \* NEW BUILDS  
\* DECKS \* RE ROOFING

**Shane Inglis**  
021 193 5000

**Parakai Springs**  
Open 7 Days

Naturally Heated Pools  
Water Slides  
Picnic Areas  
BBQ Hire and more...

www.ParakaiSprings.co.nz  
info@parakaissprings.co.nz  
0800 HOTPOOLS (468 766)

**WYATT LANDSCAPE SUPPLIES**  
0800 638 254 or 09 411 9604

Call: 09 411 9604 [www.wyatts.net.nz](http://www.wyatts.net.nz)  
waimauku@wyatts.net.nz

*Locally* owned & operated

**Free**  
loan trailers  
for use

**Trade**  
Metal  
supplies

**Open**  
7  
Days

**OPEN 7 DAYS!**  
Mon-Fri: 7am-5pm  
Sat: 8am-4pm  
Sun: 9am-3pm

**948 SH16, WAIMAUKU**

WE CAN DELIVER

• Sand • Metal • Shell • Pebble • Scoria • Mulch • Garden Mix  
• Topsoil • Compost • Tirau Gold • Pine Bark • Cambian Bark

# 'Beautiful Pasifika' Festival

Helensville woman Marie Takefala Adlam is organising a 'Beautiful Pasifika' Festival at Helensville School on Saturday, April 10. It will take the place of the festival planned for last year which became a victim of the Covid-19 pandemic, and will run from 9am to 3pm.

Marie is of Niuean descent, and her aim is to create a Pacific Island identity within the local community, and she sees the event as appealing to everyone in the district.

She says there are a lot of Polynesian families in the area, and the festival will be a way to bring them together.

The festival will feature performances from Samoan and Cook Island professional dance groups, Niuean groups, Kaukapakapa and Helensville school kapa groups, and Helensville Pasifika.

Music will come courtesy of DJ Prior.

There will be arts and crafts workshops, such as designing tapa with Hiapo, and Niue Language Roots will be demonstrating how to make fofou (head leis). There will be entertainment for children, and Pasifika

police will be on hand to play basketball with local teenagers.

A range of Pacific Island, Māori and European foods will be on offer, including specialties from Tonga, Niue and Rarotonga such as donuts, takihi, chop suey, raw fish, corned beef in taro leaves, and poke, along with a selection of sweet treats.

Merchandise stalls will be selling teeshirts, sarongs, island shirts, artworks, bedspreads, and hats.

Gel manicures and Fekai ink tattooing will be on offer, and local hairdresser Mr & Mrs Smith will be providing barber cuts. Everything will be under \$50 except for the tattooing and PILI bedspreads.

Modelled as a miniature version of the Pasifika Festival held at Western Springs in Auckland each year, Marie held an initial event in 2018 in the Helensville War Memorial Hall, which up to 300 people attended.

Marie hopes the festival will become a biennial event, and also hoped to get support from local businesses for future events.

## Bee box auction raised cash for school

The Rodney Beekeepers Club raised \$825.50 for Helensville School with its annual Bee Box auction, held at a recent meeting at the Kaipara Fishing Club.

The 10 Bee Boxes were painted by students at Helensville School. The whole school was involved in the competition, with different teams for different age groups. Entries were judged by a teacher and parents, including club committee member Vicki Allen who has children at the school.

Once the competition was judged, the winning children then painted the bee boxes. The bee boxes were then sent back to Rodney Beekeepers Club to be auctioned off.

"The boxes were painted to a very high standard and bidders were 'buzzed up' sufficiently to ensure a bidding frenzy," says Vicki, who says the hives are now in use, with bees living in them.

"Its makes hives look colourful and

distinctive for bees."

Students and their families attended the auction evening to see their painted bee boxes auctioned off.

This is the third consecutive year the club and the school have raised funds together for PATHS (Parents and Teachers at Helensville Primary School). All proceeds will go to the school's Garden to Table programme.



• Year 8 Helensville Primary student Poppy Wood (right) with club members who won bids on the boxes

## LIFESTYLE MOWING MACHINERY

"We will put the fun back into mowing"



- Quality brand mowers & ride ons
- Unparalleled service & support
- Large product range

Come in and see us today!  
8 Stevens Lane  
Waitoki  
0274 955 948

[www.moadoc.co.nz](http://www.moadoc.co.nz)



**WATER Wagon 1**  
Graeme Waterson

Like us on facebook

**027 280 2630**  
'Pure Spring Water Carriers'



Locally owned and operated  
**Insurance Broker**

- ◊ Home and Business
- ◊ Vehicles ◊ Marine

Ph: 420 2798  
Mob: 022 363 2377  
Email: [m.kreling@rdi.nz](mailto:m.kreling@rdi.nz)  
[www.rdi.nz](http://www.rdi.nz)

## COME VISIT OUR UNIQUE BOUTIQUE RURAL CARE FACILITY

Our unique boutique facility is situated on the Twin Coast Discovery Highway off State Highway 16  
Craigweil House is within reach of Muriwai Beach and the Kaipara Coast

A caring environment nurtured by our dedicated team  
Rest Home • Hospital • Secure Dementia • Day Stays

**No Premium Room Charges**

You're welcome to come in for a cuppa and see us or ring us today to discuss a complimentary day stay

09 420 8277  
143 Parkhurst Rd, Parakai  
[info@craigweil.co.nz](mailto:info@craigweil.co.nz)



**Craigweil House**  
Home & Hospital  
FEEL AT HOME WITH FAMILY



CRAIGWEIL HOUSE  
WARMLY INVITES YOU TO...

# Lockdown - Helensville Show - lockdown: Whew!

A week-long gap between raised Covid-19 levels allowed Helensville's annual A&P Show to go ahead on Saturday, February 27 - and a potentially record crowd turned out to enjoy the day.

The show came close to being cancelled with the recent Level 3 lockdown and then move to Level 2. But organisers gambled Auckland would drop back to Level 1 the week before the show, and the bet paid off. Auckland moved back to Level 3 only hours after the show closed.

Crowds packed the grounds, and apart from scanning or signing in, were able to enjoy the day like any other year - helped by great weather, with just some cloud to help

keep the sunburn away.

Food outlets and trade stands were run off their feet, with many calling it their best ever show. Sideshows in the carnival area were jam-packed all day.

Displays by the Royal NZ Air Force military dog team were extremely popular, as were displays by Russian knife and axe throwing champion Vadim Zveryanskiy, and demonstrations of pedal-powered sheep shearing.



**KUMEU PLUMBING LTD**  
Established 1974

- plumbing
- roofing
- solar heating
- pump shop
- pool & spa
- filtration
- drainage
- woodfires  
wetbacks/radiators

**Ph 420 9108**

156 Main Road, Kumeu info@kpl.co.nz www.kpl.co.nz



**We specialise in Sports Injuries**

Once again we are proudly sponsoring:  
Kaipara College students,  
Helensville Junior Rugby players  
and  
Kaipara Junior Netball players  
25% off:  
Only \$15 with ACC claim

**Late nights:**

- Monday 7pm
- Tuesday & Thursday 8pm

**Ph 420 8899**

10 Commercial Rd, Helensville

www.physioflex.co.nz



• Above: Kaumatua Adrian Noda spoke beautifully before the official opening by Mayor Phil Goff

• Below: An RNZAF military dog captures an 'offender' during one of the team's popular displays



• Above: This 7-year-old proves you are never too young to try woodchopping

• Below: Are you kidding me?



## MCLEOD MOTORS

- WOFs
- All Mechanical Repairs
- Auto Electrical
- Tyres & Batteries
- Stockists of 'Total' lubricants

5 Railway Street, Helensville

Ph: 420 8633

**Thrifty AUTO SUPPLIES LTD.**

*'For that hard to find item'*

- Automotive Supplies
- Engineering Supplies
- Nuts, Bolts, Washers etc

**NOW AT**

**103 Mill Road, Helensville**

*Come and visit us*

**Ph: 09 420 7127**



Left, top to bottom:

- Champion Russian knife thrower Vadim Zveryanskiy in action
- Dog trials were back at the show this year
- Local MP Chris Penk gets a work-out on the pedal-powered shearing machine
- Old meets new - Helensville's 1935 Chev fire engine meets its modern counterpart courtesy of a North Shore Vintage Car Club display



- Above: Sliding down the showgrounds hill is still hugely popular in 2021
- Bottom: A proud owner in the Royal Canin Pet Dog Show



**ATL PLUMBING LTD**

QUALITY SERVICE AT COMPETITIVE RATES!

- \* Maintenance
- \* Renovations
- \* Cylinders
- \* Roofing
- \* Spouting
- \* Central Heating
- \* Gasfitting + more...



CONTACT US  
WITH ANY ENQUIRY  
OR FOR A  
FREE QUOTE

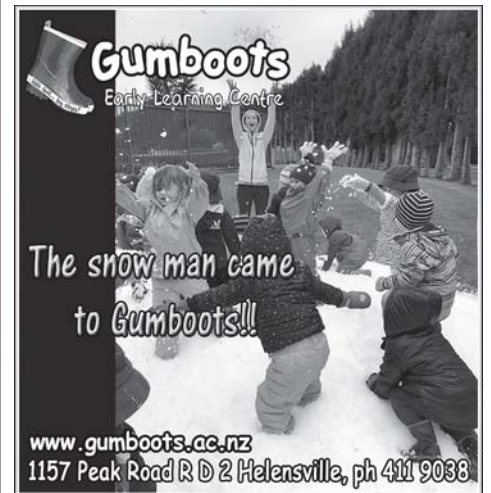
Ph: 09 420 7868 Adam: 021 245 9677  
Or: 0800 285 758 (0800 ATL PLUMBING)  
Email: adamandanita@xtra.co.nz



- For all your electrical requirements
- Repairs, maintenance & new installations
- Overhead to underground conversions
- Underground services to new homes
- New alarm systems

0274 784 396

Ph/Fax (09) 420 5122, (09) 420 8978  
email: seangrayelectrical@xtra.co.nz



www.gumboots.ac.nz  
1157 Peak Road R D 2 Helensville, ph 411 9038

## Downsizing, De-cluttering or Moving?



We're locals interested in buying your old stuff for cash - kitchen and dinner ware, tools, wooden furniture, bric a brac + much more.

Ph: 09 411 8565 | Text: 021 046 4263  
Email: remu@xtra.co.nz

## South Kaipara Men's Trust

Tama Tu Whanau Ora

Strengthening men and their families to help build better, safer communities.



10 Awaroa Road, Helensville  
(former Te Awaroa Youth Club building)  
P: 027 800 8081  
Hours: Monday and Tuesday 10am to 4:30pm



House of Patchwork Ltd

For all your Patchwork and Handcraft needs, Kits and accessories



SHOP HOURS

Tue - Sat 10am - 4pm

16 Porter Cres Helensville PH (09) 420 6355

houseofpatchworkltd@gmail.com



## Sellers & Co | Lawyers Helensville Law Office

For all your legal services including:

- Wills & Trusts
- Estate Administration
- Property Relationship Matters
- Refinancing
- Commercial Matters
- Land Subdivision
- Residential, Rural & Commercial Conveyancing



69 Mill Road, Helensville

Ph: 09 420 9324

Email: admin@helensvillelaw.co.nz

## ACCOUNTANT

**UHY** Haines Norton  
Chartered Accountants

- Farm & Lifestyle Block Specialist
- Business Planning & Development
- Financial Analysis

OFFICE

MARK FOSTER

**420 7972 021 220 5817**

Office hours 9am - 5pm  
34 Commercial Rd, Helensville  
PO Box 17 Helensville

## Levels at library

With changes to Covid alert levels always a possibility, Helensville Library senior librarian Anne Coppell wants to remind everyone how the library operates under each level.

Levels 3 and 4: The library is closed. Depending upon the situation, the external returns slot may also be closed. Last year it was closed until Level 2, but it stayed open during the short lockdown in February

Level 2: The library stays open, but physical distancing requirements mean some changes:

- Only some of the computers are available.
- Some furniture will be removed.
- No programmes such as Kids Time or visits to Craigweil / ECEs / schools.
- No jigsaw puzzles for children.
- No colouring-in pens or crayons are available, though colouring-in sheets may be taken home.
- Staff cannot spend an extended period of time with customers, which means limited computer and device assistance, and no Skinny Jump internet sign-ups in the library (these can be done by phoning Auckland Libraries' main number and completing the process over the telephone).
- Sign in with the NZ Covid Tracer QR code, or the physical form at the desk.

Level 1: Everything back to normal - but still scan the QR code or sign in manually.

## Photo judging



Helensville historian and collector John Perry had the unenviable task of judging 400 photographs across 24 classes for the Helensville Show's photography competition.

John has a particular love of black and white and historic photographs, particularly those showing early agriculture activities, and was thrilled with the range of photos in the competition, particularly those showing local scenes and activities.



# Thanks Helensville!

for coming to our 119th Helensville A&P Show

Check out photos from the Show on the previous pages

We're proud to have supported the following community organisations through this year's Helensville Show:

- Kaipara College + Tū Rangatira students
- Tu Tangi Ora Waka Ama
- Lions Club of Helensville
- Helensville Community Recycling Centre
- Helensville Pony Club
- Mana Whenua crafts people
- South Kaipara Rotary Club
- Coastguard Kaipara
- NZ Fire Service
- St John
- NZ Police
- St John Op Shop Helensville
- Rural Women NZ
- Compost Collective
- Rodney Beekeepers Association
- Kaukapakapa Scout Group
- Waimauku Scout Group
- South Kaipara Community Patrol
- Kumeu Small Landowners Association
- Rodney Neighbourhood Support
- Brightside Spinners
- South Kaipara Food Security Group

Congratulations to all the prize winners in our livestock, equestrian, cooking, and arts & crafts competitions - and especially the Grand Champion winners.

And thanks to our sponsors - we really appreciate your continued support of our community's iconic Helensville A&P Show.

The day wouldn't happen of course without our countless volunteers. Your efforts before, during and after the event are what make Helensville Show such a success. Thanks also to the many local schools for taking part - Kaipara College with volunteers and entertainment, and the many primary schools for participating in our 'cat' artworks, Junior Farmer competition and fun balloon toss.

Helensville A&P Association Executive Committee

### ■ SUPREME CHAMPION SPONSORS

SUMMERNOVA



### ■ CHAMPION SPONSORS



# Long-serving nurse to retire

Long-serving Kaipara Medical Centre nurse Christine Montgomery retires on March 17 after decades of health work in our local community.

Christine was born in England but emigrated to New Zealand, via a brief stay in Melbourne, with her family in 1955 at the age of seven. Educated at Avondale College she worked at the ANZ bank after leaving school until she was old enough to enroll in the nurse training course at Auckland Hospital.

Following her graduation Christine initially worked on the urology ward at Auckland Hospital, and after marrying husband Rhys moved to Helensville. That prompted Christine to start work with Dr Don Liddell at the rural general practice in Helensville as one of the first practice nurses in New Zealand.

"When practice nursing first started, there were no training courses and you learnt on the job," says Christine.

"I found community nursing to be totally different to hospital nursing, and it was a

steep learning curve, a huge responsibility, and an amazing experience. Since then, it is now a career in its own right, and well supported with training."

Christine worked at the medical centre in its original art deco house location on the corner of Porter Crescent and Commercial Road in Helensville until she and Rhys started their family. As Rhys was a school teacher she was able to keep working during school holidays, and she also worked nights at the birthing centre while pregnant with her third child.

Once all her children were at school Christine spent a year as a nurse at Waitakere Hospital, and then when Dr Liddell expanded his nursing staff to two, Christine rejoined the Kaipara Medical Centre team on April

Fool's day, 1987.

She has worked there ever since, with the changes of owners from Drs Maryanne and Adrian Gane for 24 years, then Peak Practice, then Helensville Community Health Trust, and now ProCare.

"It has been a journey of over 50 years and I have met many wonderful people," says Christine.

"Many changes have occurred with mixed results, but always with the care of the patients of Helensville at the forefront. I have had wonderful support and encouragement from all of my colleagues and made many friendships, and the wonderful support of my husband Rhys, and my family, to be part of looking after the health of the people of Helensville."

Outside of her work in the medical centre, Christine ran two marathons in Rotorua, and served three years as Akela for the local Cub pack, as well as time as a supervisor at the Helensville Play Centre.



• Christine Montgomery

## Chance to meet 'Horse Whisperer' Dame Jools Topp

Local 'horse whisperer' and renowned kiwi entertainer Dame Jools Topp will be at the Kaukapakapa Library from 9am to 1pm on Sunday, March 21 to talk with local equine lovers.

From pony club to yahooping at the back of the family farm, horses have always been a central thread in Jools' life - a love instilled by her late father, Peter.

She found her 'happy place' in the equestrian world, using the Vaquero training method which dates from the 1700s. More a way of life than a discipline, the Vaqueros took great pride in taking the time to develop intimate communication with their horses, using a long-term approach.

Keen to emphasise the importance of taking time to build a foundation of trust, Jools will be available to talk through any horse and rider concerns with library visitors.

For more information contact Megan Paterson, email: threehorses@xtra.co.nz or phone 021 959 017.

**MID WEST PUMPS**



- Water Pump Sales & Servicing
- Water Filtration Systems
- Filter Supplies
- Deep Well & Submersible Bore Specialists

**420 7694**

[www.midwestpumps.co.nz](http://www.midwestpumps.co.nz)

[info@midwestpumps.co.nz](mailto:info@midwestpumps.co.nz)



**HELENSVILLE BOWLING CLUB**

Email: [helensvillebowls@gmail.com](mailto:helensvillebowls@gmail.com)

*New social and playing members welcome*

- Two greens, one natural and one carpet (all weather)
- Evening business house bowls in summer
- Indoor bowls during winter
- Weekly roll-ups and regular Club Comps
- Room-hire available

38 Awaroa Road, Helensville  
Phone 09 420 8316

Facebook: [HelensvilleBowlingClub](https://www.facebook.com/HelensvilleBowlingClub)



**Marja Lubeck**

Labour List MP  
Based in Rodney

For appointments and assistance please phone:

☎ 0800 582 325 (0800 LUBECK)

@ [marja.lubeck@parliament.govt.nz](mailto:marja.lubeck@parliament.govt.nz)

✉ 7a/18 Oteha Valley Road Extension, Albany



Authorised by Marja Lubeck, Parliament Buildings, Wellington

**EDC**

ENGINEERING DESIGN  
CONSULTANTS

Sub-division Specialist

Contact us on 09 451 9044 or [team@edc.co.nz](mailto:team@edc.co.nz)  
[www.edc.co.nz](http://www.edc.co.nz)

**Building Platforms • Utility Trenches •  
Ponds • Drainage • Drilling •  
Aggregate Supply • Tip Trucks •  
Excavators • Bobcat with Attachments**



**DRIVEWAY REPAIRS  
& RE-SURFACING**

Call us for a FREE quote

**0800 4SWALE**

or 09 420 8352. 103 Mill Road Helensville

# Town's namesake house on market again

Probably the most famous residential building in Helensville has come on the market for just the second time in 20 years.

Helen's Villa in Nelson Street is the house that gave our town its name.

It's not the original house - that burned down only a few years after it was built around 1863 by one of the town's first settlers, John McLeod, and named for his wife Helen.

Daniel Stewart bought the property in 1870 and rebuilt the house as a much larger, two-storey building, using predominantly locally-milled kauri timber.

In the town's early days, it was the only European building visible from ships as they came up the Kaipara River.

The house changed hands three years ago, and is now being marketed again by Jane Burmester of Burmester Realty in Commercial Road.

The home covers 376m<sup>2</sup>, and features six double bedrooms and six bathrooms, one of which features a beautiful stained glass window, a huge kitchen with a large Rangemaster, formal and casual lounges, a formal dining room, a 2m-wide central hallway, a library, and a ballroom.

A stone staircase leads into the house, which has 12-foot ceilings, pastel bedrooms, and native timber floors. A Juliet balcony overlooks the

entrance, which is complete with the original horse and carriage turning circle.

Original kauri match lining features throughout, and in the master bedroom wardrobe a small area of original scrim lining has been left as a nod to the building's history.



• A recent photo of Helen's Villa

There are some modern touches too, such as electric gates and a bespoke brick fence to provide security

While mature trees on the 2000m<sup>2</sup> have blocked some of the home's views, the Kaipara River can still be seen from the upstairs deck, and the Helensville showgrounds and the hills beyond from some of the bedrooms.

When a previous owner purchased the property in 1998, he also bought a separate 657m<sup>2</sup> adjoining property on the eastern side, and moved the house that was on it off so Helen's Villa would have a larger section. That separate title is also available in conjunction with the main home if the purchaser wants it. The main section also has subdivision potential.

## Art Centre goings on

Locals have until Saturday, March 27 to check out Helensville Art Centre's latest cash and carry exhibition, 'Landscapes of the Soul', which showcases paintings by artists from the arts and activities programme run by Pauline Denton for L'Arche Mount Tabor Trust.

For those interested in creating books for children, a workshop called 'Get the Whole Story - Writing and Illustrating Children's Books' runs for six weeks from Friday, March 5 through to Friday, April 16 (with a gap week for Easter).

Facilitated by Ireen Potter, the workshops will cover a range of writing, illustration and publishing areas.

And for those who prefer to get a bit grubbier, pottery classes are being held on Wednesday evenings, with tutor Louise Wild, from 6pm to 8pm, until March 24.

The Art Centre held a very successful month-long 'Wood and Wool' exhibition, featuring artworks in wood by Ray Scott, and in wool by Fiona McBride, which ran until February 21. In a new initiative, the artists were on site on Sundays to discuss their work with gallery visitors. That proved popular, and Fiona was thrilled the exhibition has led to a very interesting commission.

The centre has a full programme of exhibitions and workshops planned for the rest of the year.

For enquiries about events or to enrol, contact Heather Steadman, email: [manager@artcentrehelensville.org.nz](mailto:manager@artcentrehelensville.org.nz) or phone 021 158 6859.

## Shop Local Locals supporting locals



paperplus

Select

TICKLE YOUR IMAGINATION

P: 09 420 8646

64 Commercial Road, Helensville

E: [helensville@paperpluselect.co.nz](mailto:helensville@paperpluselect.co.nz)

[www.paperplus.co.nz](http://www.paperplus.co.nz)



CYPRESS SAWMILL

## BUY DIRECT FROM THE SAWMILL

### MACROCARPA

- Kitset Raised Gardens
- Kitset Compost Bins
- Landscape Sleepers
- Pergolas and Beams
- Dry Macrocarpa for Furniture and Joinery
- Laminated Timber Benchtops
- Live-edge, one piece Macrocarpa Slabs
- Firewood, Mulch and Sawdust

### TREATED PINE

- Posts and Rails
- Retaining Walls
- Tree Stakes
- Decking Timber
- H5 treated Posts & Beams

Firewood!  
Get it now  
before  
winter!

700 Kahikatea Flat Rd, Waitoki

[www.cypress-sawmill.co.nz](http://www.cypress-sawmill.co.nz)

420 5485



# Don't spend a cent on marketing with the team at Burmester Realty

List exclusively with Burmester Realty and pay NO marketing fees.



Call us now on 0800 18 88 80

# Burmester REALTY

Licensed under the REAA 2008

Why Pay More?

**2.90%**

Commission rate to \$500,000 then 2% thereafter + GST

**Free Marketing  
Free Appraisal**

## WELCOME TO THE TEAM

Kara



Get in touch with Kara for all your Real Estate needs!

**Kara Singer**  
**Sales & Marketing**  
**Consultant**

**021 414 376**

[kara.singer@harcourts.co.nz](mailto:kara.singer@harcourts.co.nz)

92 Commercial Road  
Helensville 0800  
Harcourts The Difference Ltd  
Licensed Agent REAA 2008

**Harcourts** The Difference

## from our local MP

School's back! After a summer recess that was either too long or not long enough (depending on your perspective as a parent/teacher/student!) schools around the country returned a few weeks ago.



In the case of our own excellent local schools, staff and students have been busily engaged in all the things you'd expect and hope would occupy the collective minds of our educational establishments.

Unfortunately, schools have also had to spend precious time and energy - always finite resources - in much more mundane matters, such as supporting students to get to school.

Like many things in our modern world, the process of learning can be stressful. To some extent this may be inevitable but in other respects the problems seem entirely avoidable. The hardest part of anyone's school day shouldn't be getting to and from the gates.

School bus transport has been a vexed question for many years and already I've needed to advocate on the subject several times, in my relatively short time to date as an MP. This time last year I wrote to the Minister of Education asking that school bus services be made much more available in rural areas such as Helensville.

It's well over a century since the rule was established that children within 4.8km or 3.2km of their local school (depending on the child's age and stage) needn't be provided with transport. That was all very well back in the early 1900s when 'automobiles' were few and far between. It's also all very well nowadays in urban and suburban settings where footpaths and controlled crossings provide safe avenues for children to walk.

In the areas surrounding Kaipara College and various local primary schools, however, roads are simply not designed to support pedestrians and, with trucks inclined to thunder past at 100km/h or more, the situation is clearly untenable.

Along with the schools themselves (who are not resourced as a transport agency but try hard to support local families), I've been asking government for a solution. I'll keep going with that as the value of education and safety - for our local community - simply demands it.

- Chris Penk, MP for Kaipara ki Mahurangi  
[chris.penkmp@parliament.govt.nz](mailto:chris.penkmp@parliament.govt.nz) | Ph: 09 412 2496.

## point of view

Congratulations to everyone involved in the busy event season in Helensville, with arts, cultural and community events occurring almost every weekend.



Whether you're a hot rod fan, a country music lover, an art aficionado, or a keen fisher, there's something happening in the Helensville region for you. And in the Helensville A&P Show, there's something for everyone.

None of these events occur without volunteer and community support. Indeed, volunteers are at the heart of our communities and their vibrancy. I look forward to seeing you around town and at local events as much as possible.

I also appreciate all the contact and communication I receive from people concerned about road safety, congestion, education, growth, and more. I know it takes time and energy to write a letter or email, but it's great that you make that effort to keep me informed and to ensure I can be the best advocate in government, for our area, that's possible. I hear those concerns and pass them on to the government and Ministers accordingly. Please keep in touch.

And take care of yourselves and each other on the busy roads and at all these events. Thanks again.

- Marja Lubeck, Labour List MP in Rodney  
[marja.lubeck@parliament.govt.nz](mailto:marja.lubeck@parliament.govt.nz)



## Helensville Birthing Centre

TE PUNA WHANAU K I TE AWAROA

Helensville Birthing Centre is your local community facility. It provides a free service for women who choose to give birth in a low-tech environment. Alternatively, women who give birth in hospital can then transfer to us for the opportunity to rest and establish breastfeeding.

You are welcome to call in and have a look around, or browse our facilities online.

53 – 65 Commercial Road, Helensville

Ph: (09) 420 8747

Email: [bookings@helensvillebirthingcentre.co.nz](mailto:bookings@helensvillebirthingcentre.co.nz)

[www.birthcentre.co.nz](http://www.birthcentre.co.nz)

# local board matters

Consultation on Auckland Council's 10 Year Budget closes on March 22 and it's important we hear your views on proposals.

The Long Term Plan (LTP) sets out funding for council's activities, services and investments for the next 10 years. It is reviewed and consulted on every three years. As part of this, council also adopts an annual budget each year. The Rodney Local Board Plan informs the LTP and annual budget.

Budget constraints owing to Covid-19 will continue to restrict council's capacity to deliver services, as well as our Rodney Local Board projects. There's a \$1 billion hole in council's budget this financial year and for the next three, which will affect areas from maintaining community facilities to funding transport and environmental work. Tough decisions will be needed.

Your feedback is so crucial as it helps us to understand what matters to you. Even if you agree with our priorities, we still want to hear from you as many voices help us make a strong case to councillors for funding.

As a local board we receive a set budget each year that we can allocate based on our community's needs and preferences. Some of the areas where we have decision-making over budgets include local parks, libraries, the environment, and maintaining and upgrading town centres and halls.

Many other areas that are important to our community are beyond our decision-making responsibility, including rates, regional parks, state highways and road sealing. Other bodies make those decisions.

Below are our three proposed priority areas that we will advocate to councillors to allocate funding for, as we don't make decisions on these areas:

- Safe, well-maintained roads: enough funding for Auckland Transport to renew and maintain 12 percent of Auckland's roading network each year to ensure safe, well-maintained roads.
- Improvements to unsealed roads: \$121 million in funding for Auckland Transport's Unsealed Roads Improvement Programme to improve unsealed roads.

- Funding to continue progressing the delivery of the Kumeū-Huapai indoor courts facility to cater for a growing population.

Initiatives where we have control over budgets that we propose for the Rodney Local Board area for 2021/2022 include:

- Continuing town centre improvements.
- Continuing our focus to improve water quality in our waterways by restoring freshwater ecosystems through riparian fencing and planting, and through initiatives to reduce sediment.
- Improving our local biodiversity and natural environment by eradicating pests, carrying out restoration work, and mitigating kauri dieback.
- Supporting the community, and community resource recovery and recycling centres, to minimise waste, turn waste into resources, and to promote education on waste reduction.
- Progressing the outcomes identified in the Green Road master plan.
- Progressing renewals or construction of key community facilities.

With the proposed LTP, council is also seeking feedback on regional priorities and funding across many areas, such as:

- Rates levels.
- Transport infrastructure.
- Protecting the environment and responding to climate change.
- Maintaining and renewing community assets.
- Stormwater, drinking water and wastewater infrastructure.

For more on the proposed LTP: [ourauckland.aucklandcouncil.govt.nz/articles/news/2020/12/recovery-budget-proposal](http://ourauckland.aucklandcouncil.govt.nz/articles/news/2020/12/recovery-budget-proposal).

Please provide your feedback by midday, March 22 this year. Have your say: [akhaveyoursay.aucklandcouncil.govt.nz](http://akhaveyoursay.aucklandcouncil.govt.nz) - Phelan Pirrie, RLB Chair, 021 837 167 [phelan.pirrie@aucklandcouncil.govt.nz](mailto:phelan.pirrie@aucklandcouncil.govt.nz)



Come and try your friendly local motorcycle workshop. We service/repair quads, dirt and road bikes - plus we have parts and accessories.



Pickups and drop-offs available.

Ph: 4207754 or 027 474 7441  
e: [sevice@helensvillemotorcycles.co.nz](mailto:sevice@helensvillemotorcycles.co.nz)



**Dion Mayes**  
Qualified Arborist

All tree work • Pruning  
Hedges • Council Approved  
Full Insurance • Tree Felling  
Tree Chipping Service

**Difficult Trees a Specialty**

**FREE QUOTES**

0800 349994  
0800 DIZZYH  
021 527219 / 09 4205352



Landscape Design / Construction / Maintenance  
Water Features / Lighting / Irrigation  
Retaining Walls / Decks / Fencing / Pergolas  
Planting / Plant Supply  
Concrete / Stonework / Paving

[info@creatingnaturelandscapes.co.nz](mailto:info@creatingnaturelandscapes.co.nz)  
[www.creatingnaturelandscapes.co.nz](http://www.creatingnaturelandscapes.co.nz)  
Call Ben 021 285 4469 / 09 947 4298



**APPROVED WASTEWATER LTD**

Wastewater design  
Tank supply, installation, servicing  
Drainlaying

Phone: 420 9042  
69H Mill Rd, Helensville  
[info@approvedwastewater.co.nz](mailto:info@approvedwastewater.co.nz)  
[www.approvedwastewater.co.nz](http://www.approvedwastewater.co.nz)

GOURMET & GAME  
**MEAT**  
PROCESSORS

0800 GAMEDMEAT  
FOR ALL HOME KILL REQUIREMENTS  
RICHARD: 027 411 9897  
LEITH: 027 259 1701  
PLEASED TO MEAT YOU - MEAT TO PLEASE YOU

## Kaukapakapa Drainage

- Septic Tank Systems
- Drainage
- Truck & Digger Hire
- Pile Drilling
- Drain Unblocking

Reasonable Rates  
Over 35 Years Experience

Phone/Fax: 420 4149  
Mobile: 021 926 301  
Email: [gary@kdrainage.nz](mailto:gary@kdrainage.nz)

## ■ FAMILY FUN DAY

The annual free Family Fun Day (previously Children's Day Out) will be held at Parakai School on Sunday, March 7 from 10am to 1pm. Organised by Kindred Family Services, the event celebrates our tamariki and is a chance for parents and whānau to spend quality time with their children. There will be activities, face-painting, food and performances, plus information about other local agencies and community groups which support local families.

## ■ COUNCILLOR AT TARRA MEETING

Rodney Councillor Greg Sayers will be at the next meeting of Te Awaroa Residents & Ratepayers on Wednesday, March 10 to discuss issues with rates, and other council issues if time allows. The planting of trees in Commercial Road will be discussed, and information on making submissions about Council's budget will be available.

The meeting will start at 7pm at 44 Commercial Road, Helensville. For more information phone TARRA chair Holly Southernwood on 021 488 427.

## ■ KAUKAPAKAPA MARKET

The next Kaukapakapa Market is on Sunday, March 21 from 8.30am to 1pm, and will feature live music from Ralphe between 9.30am and 1pm. There will be the usual free face painting for children, and a wide selection of stalls with everything from locally hand-made crafts, and fresh fruit and vegetables to used items, clothing and collectibles, books, plants, freshly made coffee, food, a sausage sizzle, and more. For more information phone Sarah on 0274 831 542 or email her at: sarah1@maxnet.co.nz.

## trade & classifieds

### ■ Helensville Glass

24 hour service. Free measure and quote.  
Ph: 420 8210

## ■ FAMILY GALA

River Valley Baptist Church at Parakai will hold a family gala day on Saturday, March 27 from 10am to 2pm. Featuring budget-friendly food and activities, there will be a bouncy castle, a café, barbeque and ice cream, magic carpet rides, an Easter egg hunt, face painting, plate smash, games, and stalls with second hand goods and clothes, produce, baking and preserves.

## Men's Health Day

The Helensville Men & Family Centre will hold a free Men's Health Day at the centre in Te Awaroa Road on Saturday, March 27, from 11am to 3pm. It's being held in association with the Waitemata District Health Board's bowel screen unit, and will among other things feature Bella, the giant inflatable, walk-through bowel. St John cadets and SKYouth Trust will also be involved.

## Daphne Hall

Daphne McDonald was born in Helensville on March 15, 1933. She was the descendant of two pioneer families - the McDonalds and the Nicholls, who had property at Evans Road, South Head.

Daphne and older sister, Rose went to school at Parkhurst, and later at Helensville District High School. They attended the Presbyterian churches at Parakai and Helensville.

Daphne married Gordon Hall, whose mother lived in Helensville. Gordon worked on the South Head farm and later he and Daphne built a house there. They had two children, Dennis and Angela. Daphne was a keen member of the Helensville and District Historical Society, and was known for her hospitality, while Gordon enjoyed showing visitors around the farm.

Daphne retired to Albany and died on Wednesday, February 10, 2021.

## Helensville News - Publication Information

### ■ APRIL 2021 deadline: Tuesday, 23rd March, 2021

ISSUE DUE OUT TUESDAY, April 6th 2021

#### Editorial Enquiries, Letters to the Editor and Advertising:

Dave Addison - Ph: 420 7215 • Mobile: 021 178 5568 • Email: dave@helensvilleneews.co.nz

#### Free Subscriptions to Online Edition:

Email: subscribe@helensvilleneews.co.nz

#### 2021 issue dates and deadlines:

Due out: April 6th	Copy by: March 23rd	Due out: June 1st	Copy by: May 18th
Due out: May 4th	Copy by: April 20th	Due out: July 6th	Copy by: June 22nd

**Editorial:** Ph 420 7215. **Editor & Publisher:** Dave Addison, Helensville News (2011) Ltd, 502 Fordyce Rd, RD1, Helensville 0874.

**Design, Subediting & Layout:** Dash Design, 420 7215. **Printing:** Rob McCorkindale, Print Matters, 0274 740 657.

**Copyright:** No material in this newspaper may be copied or reproduced without the publisher's permission.

**Disclaimer:** Every effort has been made to ensure the accuracy of information in this newspaper, but the editor and publisher accepts no responsibility for any errors or omissions.

**Letters to the Editor:** Should be kept to around 250 words and may be edited as space dictates.



[www.facebook.com/helensvilleneews](http://www.facebook.com/helensvilleneews)

[www.helensvilleneews.co.nz](http://www.helensvilleneews.co.nz)



**St John**

## Opportunity Shop

90 Commercial Rd  
Helensville

**Ph: 420 9272**

Open  
Monday to Saturday



Quality auto service and  
repair at country prices



WOFs - Brakes - Suspension

**90 Mill Rd, Helensville**  
**Ph 09 420 8177**

# Burnetts



**MOBILE**  
**0274 924 494**

## FIRST AUTO ELECTRICAL

### Full Mobile Service

Specialists in Auto Electrical & Air Conditioning  
Servicing Vehicles, Heavy Machinery,  
Farm Equipment & Marine

Workshop ⚡ Parts ⚡ Accessories

**Ph 09 427 5748**

**Mob 021 689 700**

